

EAV2000/3000/4000/5000 Series, Soft Start-up Valve, European EAV2000-F02-4YO-Q

Datasheet

General series information

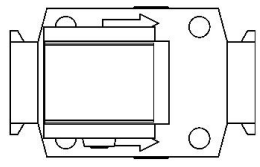
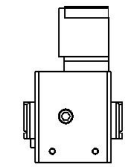
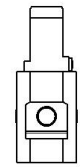
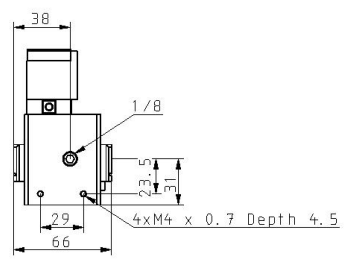
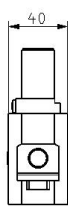
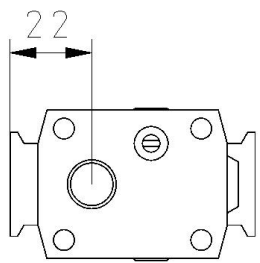
- Operating pressure range: 0.2 - 1MPa
- Coil rated voltage: 12, 24VDC;
100, 110 to 120, 200, 220VAC
- Allowable voltage fluctuation: -15% to +10%
of rated voltage
- Ambient & fluid temperature: 0 to 60°C
- Electrical entry: grommet, type D DIN connector,
type Y DIN connector

Standard specifications

| | |
|--|--|
| Size | 2000 |
| Port Size | 02 (1/4) |
| Option | None |
| Voltage | 4 (220VAC) |
| Lead Wire | YO (Type Y DIN Terminal without Connector) |
| Surge Suppressor | None |
| Manual Override | Non-locking Push Style (Flush) |
| Q | Q (CE Marked) |
| Pressure medium | Air |
| Maximum temperature of pressure medium | 60 °C |
| Minimum temperature of pressure medium | 0 °C |
| Maximum operating pressure | 1 MPa |
| Minimum operating pressure | 0.2 MPa |
| Proof pressure | 1.5 MPa |
| Maximum ambient temperature | 60 °C |

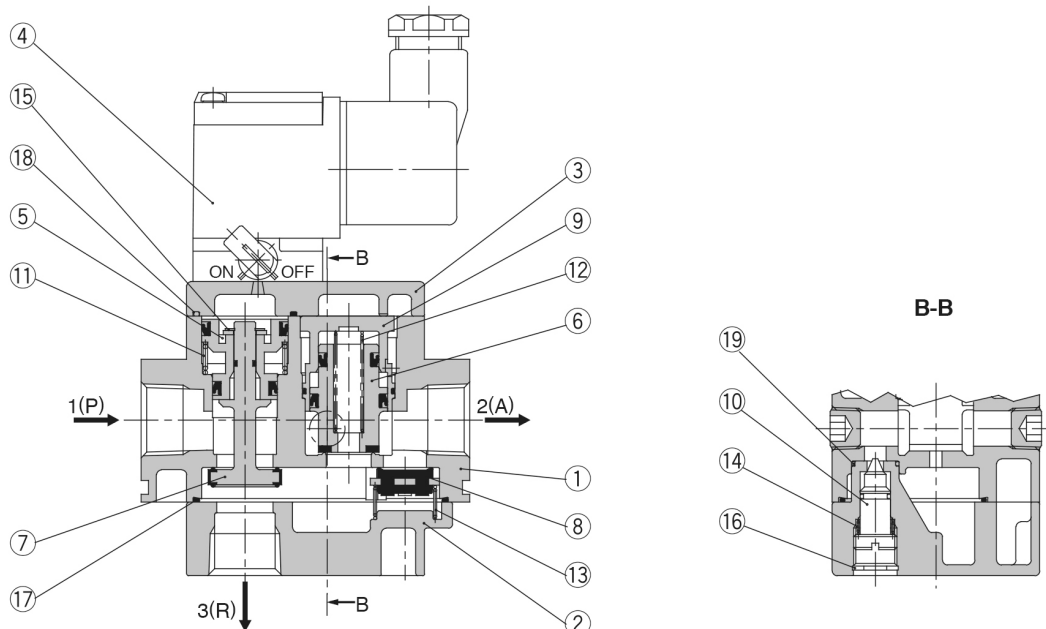
| | |
|------------------------------|---|
| Minimum ambient temperature | 0 °C |
| Pneumatic input connection | G 1/4 |
| Pneumatic output connection | G 1/4 |
| Pneumatic exhaust connection | G 1/4 |
| Flow rate | 1089 l/min (ANR) |
| Type of electrical connector | Type Y (DIN terminal/Without connector) |
| Manual override | Non-locking push type (flush type) |

Dimensions



Constructions

Construction



Parts list

| No. | Description | Material |
|-----|-------------|----------|
| 1 | Body | ADC |
| 2 | Cap | ADC |
| 3 | Cover | ADC |

Replacement parts

| No. | Description | Material | Part no. | | | |
|-----|----------------------------|-------------------|------------|------------|------------------|-----------------|
| | | | AV2000 | AV3000 | AV4000 | AV5000 |
| 4 | Pilot valve assembly | — | SF4-□-80* | | | |
| 5 | Piston A assembly | POM, NBR | P424204A | P424304A | P424404A | P424504A |
| 6 | Piston B assembly | Brass, NBR (HNBR) | P424205A | P424305A | P424405A | P424505A |
| 7 | Main valve assembly | Brass, NBR (HNBR) | P424206A | P424306A | P424406A | P424506A |
| 8 | Check valve | Brass, NBR (HNBR) | P424207 | P424307 | P424407 | P424507 |
| 9 | Piston guide assembly | POM, NBR | P424208A | P424308A | P424408A | P424508A |
| 10 | Needle assembly | Brass, NBR | P424209A | P424309A | P424409A | P424509A |
| 11 | Valve spring | Steel wire | P424211 | P424311 | P424411 | P424511 |
| 12 | Piston spring | Stainless steel | P424212 | P424312 | P424412 | P424512 |
| 13 | Check spring | Stainless steel | P424213 | P424313 | P424413 | P424513 |
| 14 | Needle spring | Steel wire | P424214 | P424314 | P424414 | — |
| 15 | C type snap ring for shaft | Tool steel | G-5 | STW-5 | STW-8 | STW-10 |
| 16 | C type snap ring for hole | Tool steel | 0-9 | 0-10 | RTW-12 | RTW-15 |
| 17 | Seal | NBR | P424210 | P424310 | P424410 | P424510 |
| 18 | Seal | NBR | P424218 | P424315 | P424415 | P424514 |
| 19 | O-ring | NBR | 10 x 8 x 1 | 11 x 9 x 1 | 12.5 x 9.5 x 1.5 | 16.5 x 12.5 x 2 |

Additional information

| | |
|---------------------------|--|
| Catalogue | AV-B_EU.pdf |
| Declaration of conformity | newDoC_AV_TF122166EN.pdf DoC_AV_TFM0001.pdf newDoC_AV_TF1U018EN.pdf newDoC_AV_TF1V342EN.pdf |
| Installation manuals | IM_AV_TFQ49EN-A.pdf |