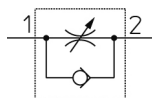


## Compact, Elbow - JAS JAS-LEB04-M5

Datasheet

### General series information

- Port Size: M3, M5, 10-32 UNF, 1/8
- Applicable Tubing O.D.: Ø 3.2 to Ø 6 mm and Ø 1/8" to Ø 1/4"
- Operating Pressure Range: 0.05 to 0.7 MPa.

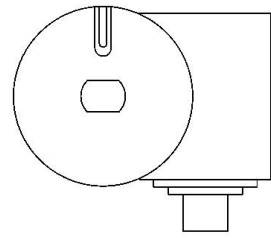
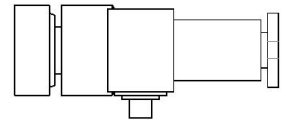
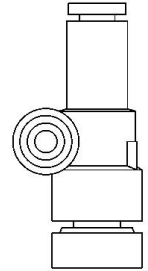
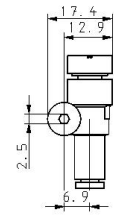
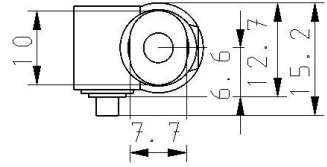
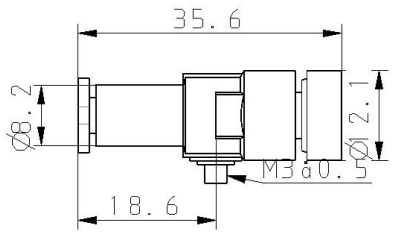


Flow control valve, adjustable, with reverse free flow

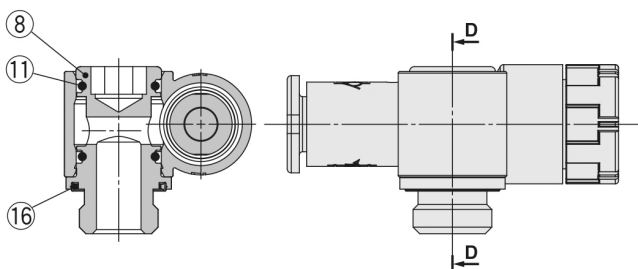
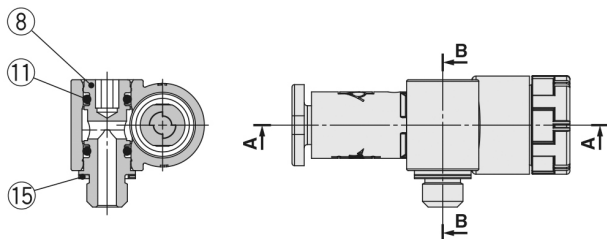
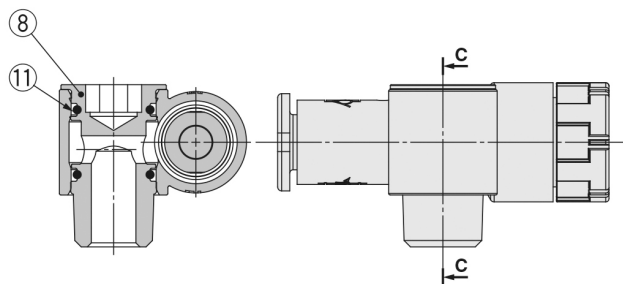
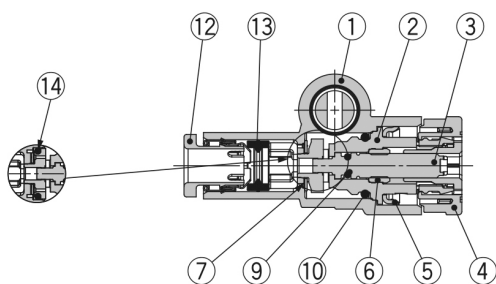
### Standard specifications

Control Method	E (Meter-out, Gray)
Stud Position	B (Left Side)
Applicable tubing O.D.	04 (ø4)
Port Size	M5 (M5 x 0.8)
Seal method	w/o Sealant
Pressure medium	Air
Maximum operating pressure	0.7 MPa
Minimum operating pressure	0.05 MPa
Proof pressure	1.05 MPa
Maximum ambient temperature	60 °C
Minimum ambient temperature	- 5 °C
Usable tubing material	Nylon, Soft Nylon, Polyurethane, FEP, PFA
Weight	0.006 Kg

# Dimensions



## Constructions



### Component Parts

No.	Description	Material	Note
1	Body A	PBT	
2	Body B	PBT	
3	Needle	PBT	
4	Knob	POM	
5	Stopper	Stainless steel	
6	Needle guide	Brass	Electroless nickel plating
7	Disk seal	HNBR	
8	Stud	Brass	Electroless nickel plating
9	O-ring	NBR	
10	O-ring	NBR	
11	O-ring	NBR	
12	Cassette	—	
13	Seal	NBR	
14	O-ring	NBR	Meter-in only
15	Gasket	NBR/Stainless steel	
16	Seal	NBR	

## Additional information

Catalogue

[JAS-B\\_EU.pdf](#)

Operation manuals

[OM\\_JAS-L\\_OMX0006EN-A.pdf](#)