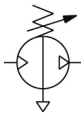


VBA10/11A, Booster Regulator VBA11A-F02

Datasheet

General series information

- Service life increased.
- Noise reduced.
- Condensation reduced.
- Reliability improved.



Pneumatic booster regulator, handle operated

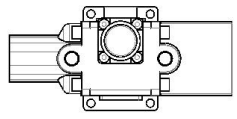
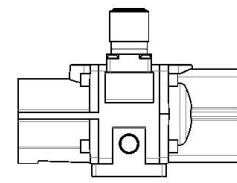
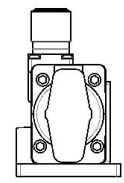
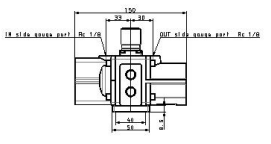
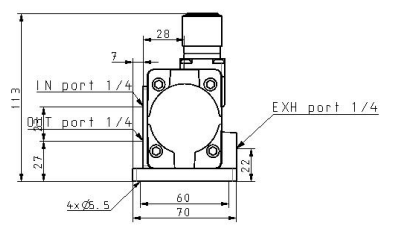
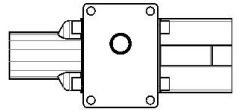
Standard specifications

Body Size	11A (1/4, Handle-operated Type, Pressure Increase Ratio 2 to 4 Times)
Thread Type	F (G [PF])
Option	None
Semi-standard	Standard
Pressure medium	Compressed Air
Maximum operating pressure	1.0 MPa
Minimum operating pressure	0.1 MPa
Proof pressure	3.0 MPa
Maximum ambient temperature	50 °C
Minimum ambient temperature	2 °C (No freezing)
Approvals	No need
Number of pneumatic connections	3 pcs.
Set pressure range	0.2 to 2.0 MPa
Port size	Rc 1/4
Pressure increase ratio	2 to 4 times
Pressure adjustment mechanism	Handle-operated with relief mechanism
Max. Flow rate (l/min (ANR))	70 (l/min (ANR))
Supply pressure range (MPa)	0.1 to 1.0 MPa

Pressure gauge port size (Rc) (IN/OUT: 2 locations)	Rc 1/8
Installation	Horizontal
Lubrication	Grease (Non-lube)
Weight	0.840 Kg

Specifications are subject to change without prior notice and any obligation on the part of the manufacturer.

Dimensions



Specifications are subject to change without prior notice and any obligation on the part of the manufacturer.

Additional information

Catalogue	VBA-VBAT-Dd_EU.pdf
Operation manuals	OM_VBA-OM-L007_EN-E.pdf OM_VBA-MM-N016-E_EN.pdf OM_VBA10A_N010EN-E.pdf