

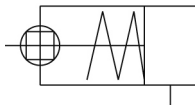


C(D)76K-S/T, Air Cylinder, Non-rotating, Single Acting, Single Rod C76KY40-100S

Datasheet

General series information

- Single acting, single rod, non-rotating
- Spring return or spring extend
- Bore sizes (mm): 32, 40
- Strokes up to 250 mm (standard)
- Auto switch capable



Single-acting cylinder, non rotating single piston rod, return stroke by spring

Standard specifications

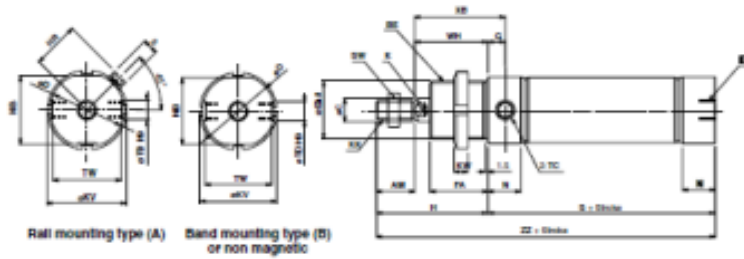
Magnet	None
Mounting	Y (Front Nose In-line)
Bore Size	40 mm
Stroke	100
Action	S (Spring Return)
Switch Mounting	Standard
Auto Switch	No Switch
Lead Wire or Prewired Connector	0.5m (Or None in the Case of No Switch)
Number	2 pcs. (Or None in the Case of No Switch)
Rod End Options	None
Made of Stainless Steel	Standard
Maximum operating pressure	1.0 Mpa
Minimum operating pressure	0.18 MPa
Proof pressure	1.5 Mpa
Pneumatic input connection	G 1/4
Pneumatic output connection	G 1/4
Mode of operation of drive single	Single acting spring return
Maximum piston speed	750 mm/s

Type of cushioning	Rubber bumper
Piston rod end	Male Thread
Male thread of rod end	M12 x 1.75
Minimum piston speed	50 mm/s
Non-rotating accuracy of plate	± 0.5°
Lubrication	None (Non lubricated)
Number of pneumatic connections	1
Fluid	Air
Ambient and fluid temperature	-20 - 80°C
Weight	1.181 Kg

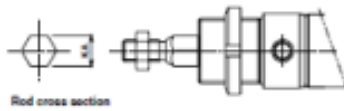
Dimensions

Dimensions (First angle projection)

Single acting/Spring return, Single rod
 Rubber cushion: C76KY(Bore)-(Stroke)S-□
 Without magnet, Built-in magnet



C76KY Non-rotating, Piston rod

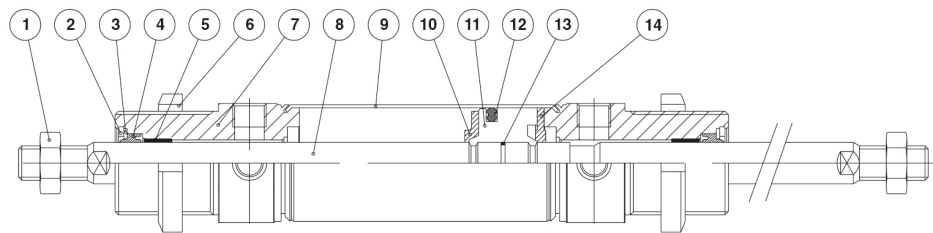


Series	AM	SE	AC	AD	φD	SE	FA	G	H	E	KA	KK	φKV	KW	HR	N	NB	SW	TC	φTD4G	TW	WH	ER	
32	20	M10 x 1.5	12	17.5	35	2	1.8	30	9	9.8	10	12.2	M10 x 1.5	38	7	23.8	17	34.5	17	M8 x 1	10° ⁽¹⁾	34.5	38	47
40	24	M10 x 1.5	14	48.5	38	2	1.4	38	12	68	12	14.2	M12 x 1.5	50	9	28.5	22	42.5	19	M10 x 1	12° ⁽²⁾	42.5	48	57

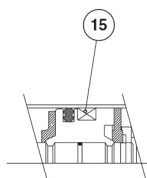
Series	Stroke	S					Z				
		1 to 50	51 to 100	101 to 150	151 to 200	201 to 250	1 to 50	51 to 100	101 to 150	151 to 200	201 to 250
32	60 (23)	118	143	168	---	126 (51)	176	201	226	---	
40	80 (114)	139	164	189	214	158 (100)	208	233	258	283	

() : in the case of non-rotating

Constructions



STANDARD EXECUTION



BUILT IN MAGNET

Parts List

Item	Part name	Material	Quantity	Remarks
1	Rod end nut	Carbon steel	1	Nickel plating
2	Retaining ring	Carbon steel	2	Nickel plating
3	Plain washer	Carbon steel	2	Nickel plating
4	Rod seal	NBR	2	
5	Bush	Sintered bronze	2	
6	Mounting nut	Carbon steel	1	Nickel plating
7	Rod cover	Aluminum alloy	2	White alumite
8	Piston rod	Stainless steel	1	Hard chrome plated

Item	Part name	Material	Quantity	Remarks
9	Cylinder tube	Stainless steel	1	
10	Bumper A	Urethane	1	
11	Piston	Aluminum alloy	1	Chromate
12	Piston seal	NBR	1	
13	Piston gasket	NBR	1	
14	Bumper B	Urethane	1	
15	Magnet		1	(Switch type only)

Additional information

Catalogue

[C76_EU.pdf](#)