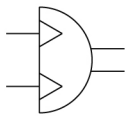


C(D)RB2*W10~40-Z, Rotary Actuator, New Vane Style CRB2BW20-90DZ

Datasheet

- Torque up to 15 Nm.
- Rotating angle: 90°, 100°, 180°, 270°.
- Angle adjustment range up to 240°.
- Many variations of shaft-end shape (6 types).
- Port location can be selected: Side or Axial ported.
- Many mounting variations.



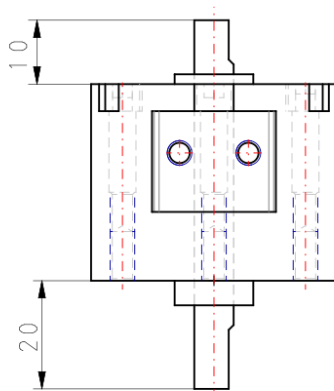
Semi-rotary actuator, double acting

Standard specifications

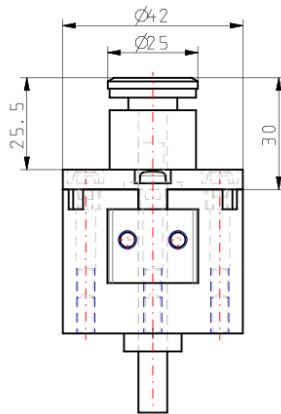
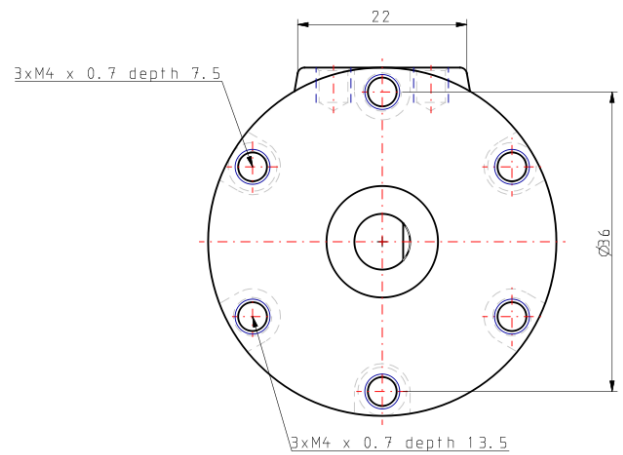
Magnet	None
Mounting	B (Basic)
Standard Shaft Type	W (Double Shaft with Single Flat)
Angle Adjusting Unit	None
Size	20 mm
Rotation Angle - Vane	90D (Angle: 90 Double Vane)
Port	Side
Auto Switch	No Switch
Lead Wire or Prewired Connector	0.5m (Or None in the Case of No Switch)
Number	2 pcs. (Or None in the Case of No Switch)
Pressure medium	Air (Non-lube)
Maximum temperature of pressure medium	60 °C
Minimum temperature of pressure medium	5 °C
Maximum operating pressure	0.7 MPa
Minimum operating pressure	0.15 MPa
Proof pressure	1.05 MPa
Maximum ambient temperature	60 °C
Minimum ambient temperature	5 °C

Conform to the European RoHS Directive	Conform
Numero of pneumatic connections	2 pcs.
Pneumatic input connection	M5 x 0.8
Pneumatic exhaust connection	M5 x 0.8
Geometric form of the piston rod	Single rod
Rotation time adjustment range s/90°	0.03 to 0.3
Shaft load: Allowable radial load	25 N
Shaft load: Allowable thrust load	20 N
Weight	0.119 Kg

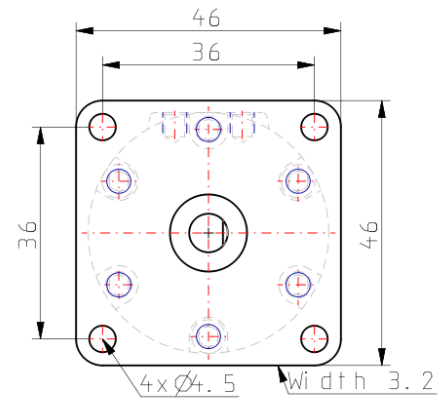
Dimensions



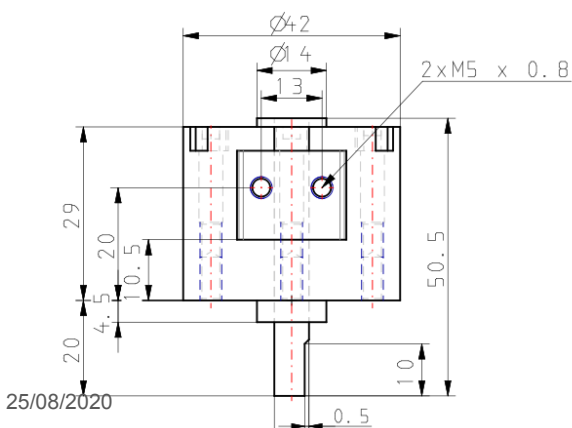
Shaft type W



Autoswitch detail



Flange detail



25/08/2020

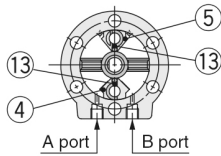
Constructions

Double vane • Figures below show the intermediate rotation position when A or B port is pressurised.

Size: 10

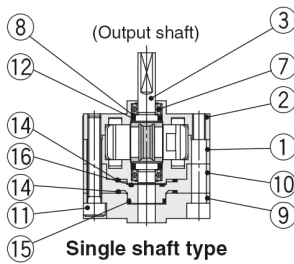
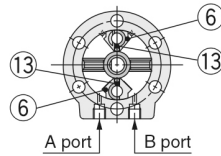
For 90°

(Viewed from the output shaft side)

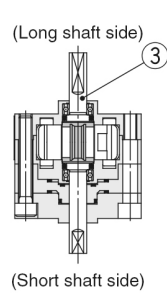


For 100°

(Viewed from the output shaft side)



Single shaft type

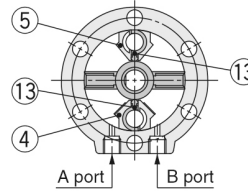


Double shaft type

Size: 15, 20, 30, 40

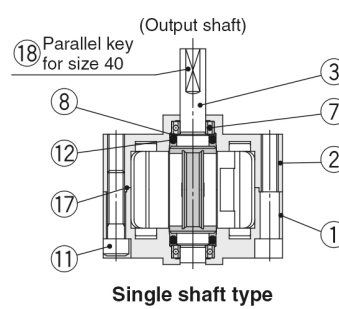
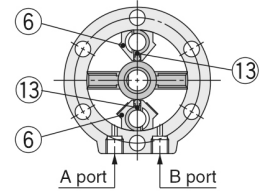
For 90°

(Viewed from the output shaft side)

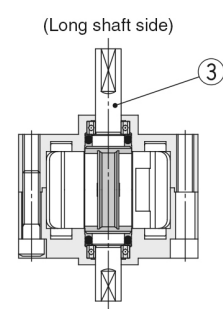


For 100°

(Viewed from the output shaft side)



Single shaft type



Double shaft type

Component Parts

No.	Description	Material	Note
1	Body (A)	Aluminium alloy	Painted
2	Body (B)	Aluminium alloy	Painted
3	Vane shaft	Chrome molybdenum	
4	Stopper	Stainless steel*	
5	Stopper	Resin	
6	Stopper	Stainless steel*	
7	Bearing	Bearing steel	
8	Back-up ring	Stainless steel	
9	Cover	Aluminium alloy	

* For size 40, material for ④, ⑥ is aluminum alloy.

No.	Description	Material	Note
10	Plate	Resin	
11	Hexagon socket head cap screw	Chrome molybdenum	Special screw
12	O-ring	NBR	
13	Stopper seal	NBR	Special seal
14	Gasket	NBR	Special seal
15	O-ring	NBR	
16	O-ring	NBR	
17	O-ring	NBR	Size 40 only
18	Parallel key	Carbon steel	Size 40 only

Additional information

Catalogue

[CRB2-C_EU.pdf](#)