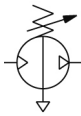


## VBA2#A,4#A, Booster Regulator VBA20A-F03GN

Datasheet

### General series information

- Service life increased.
- Noise reduced.
- Condensation reduced.
- Reliability improved.



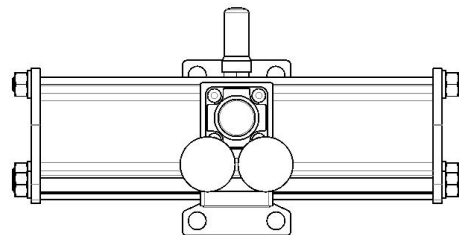
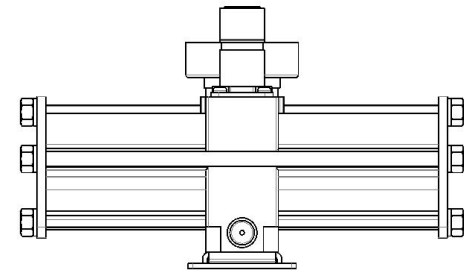
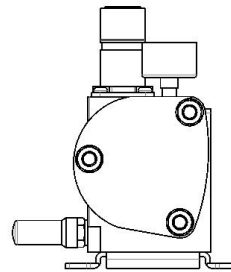
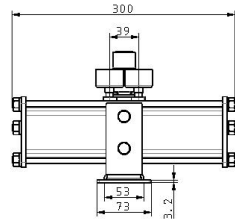
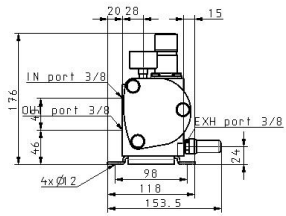
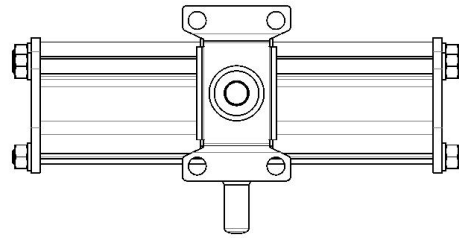
*Pneumatic booster regulator, handle operated*

### Standard specifications

|                                 |  |
|---------------------------------|--|
| Made to Order                   | Standard                               |
| Body Size                       | 20A (3/8, Handle-operated type)        |
| Thread Type                     | F (G [PF])                             |
| Port Size                       | 03 (3/8)                               |
| Option                          | GN (Pressure Gauge [2 pcs.], Silencer) |
| Semi-standard                   | Standard                               |
| Pressure medium                 | Compressed Air                         |
| Maximum operating pressure      | 1.0 MPa                                |
| Minimum operating pressure      | 0.2 MPa                                |
| Proof pressure                  | 1.5 MPa                                |
| Maximum ambient temperature     | 50 °C                                  |
| Minimum ambient temperature     | 2 °C (No freezing)                     |
| Approvals                       | No need                                |
| Number of pneumatic connections | 3 pcs.                                 |
| Flow rate                       | 1000 l/min                             |
| Set pressure range              | 0.2 to 1.0 MPa                         |
| Port size                       | Rc 3/8                                 |
| Pressure increase ratio         | Twice                                  |
| Pressure adjustment mechanism   | Handle-operated with relief mechanism  |

|   |                   |
|---|-------------------|
| Supply pressure range (MPa)                         | 0.1 to 1.0 MPa    |
| Pressure gauge port size (Rc) (IN/OUT: 2 locations) | 1/8               |
| Installation  | Horizontal        |
| Lubrication   | Grease (Non-lube) |
| Weight  | 3.800 Kg          |

# Dimensions



## Additional information

|                   |   |
|-------------------|---|
| Catalogue         | <a href="#">VBA-VBAT-Dd_EU.pdf</a>  |
| Operation manuals | <a href="#">OM_VBA-OM-L007_EN-E.pdf</a><br><a href="#">VBA_MM_M009GB-B.pdf</a><br><a href="#">MM_VBA20A_MM-L010EN-A.pdf</a><br><a href="#">VBA40A_MM_L004EN-B.pdf</a> |