

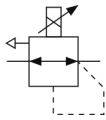
# ITV00\*\*, Compact Electro-Pneumatic Regulator

## ITV0050-3ML

Datasheet

### General series information

- Pressure range: 0.005 to 0.9 MPa or -1 to -101 kPa
- Maximum flow rate: 6 l/min (ANR)
- Port sizes: built-in one-touch fittings (ø4 mm, ø5/32 inches)
- Error indication LED.



Electro-pneumatic regulator

### Standard specifications

Pressure Range	5 (0.001 to 0.9 MPa)
Power Voltage	0 (DC24V)
Input Signal	3 (Voltage Style 0~10 V DC)
Built-in One-touch Fitting	Metric Size One-touch Fitting
Base Type	M (For Manifold)
Bracket	None
Cable Connector	L (Right Angle Style 3 M)
Maximum operating pressure	1.0 MPa
Minimum operating pressure	0.1 MPa
General power supply	24 V DC 10 %, max. 0.12 A
Approvals	CE
Pneumatic input connection	4 mm
Pneumatic output connection	4 mm
Pneumatic exhaust connection	4 mm
Flow rate of secondary exhaust	6.0 NI/min
Maximum output pressure	0.9 MPa
Current consumption	0.12 A
Enclosure	IP65
Sensitivity	Within 0.2% (Full span)

Repeatability	Within 0.5% (Full span)
Set pressure range	0.001 - 0.1 MPa
Linearity	Within 1% (Full span)
Power supply voltage	24 VDC 10%
Max. supply pressure	1.0 MPa
Min. supply pressure	Set pressure +0.1 MPa
Temperature characteristics	Within 0.12% (Full span)/C
Connection	Built-in One-touch fittings
Hysteresis	Within 0.5% (Full span)
Input signal Voltage type	0 - 10 VDC
Input impedance Voltage type	10 k?
Output signal Analogue	1 to 5 VDC (Output impedance: Approximately 1 k?) Output accuracy within 6% (Full span)
Weight	0.150 Kg



## Additional information

Catalogue	<a href="#">ITV-G_EU.pdf</a>
Declaration of conformity	<a href="#">newDoC_ITV0000-H_EN.pdf</a> <a href="#">newDoC_ITV0000-G_EN.pdf</a> <a href="#">newDoC_ITV0000_EN.pdf</a> <a href="#">DoC_ITV00x_TF00001-B.pdf</a>
Installation manuals	<a href="#">IM_ITV0000_TF2Z365EN.pdf</a>
Operation manuals	<a href="#">OM_ITV0000_EN-A.pdf</a>