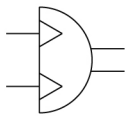


C(D)RB2*W10~40-Z, Rotary Actuator, New Vane Style CRB2BW10-270SZ

Datasheet

- Torque up to 15 Nm.
- Rotating angle: 90°, 100°, 180°, 270°.
- Angle adjustment range up to 240°.
- Many variations of shaft-end shape (6 types).
- Port location can be selected: Side or Axial ported.
- Many mounting variations.



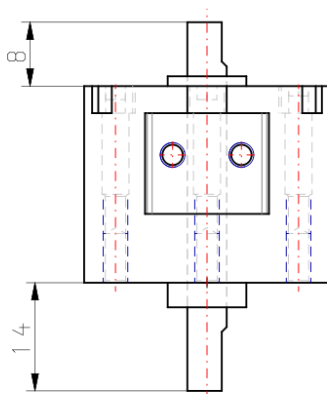
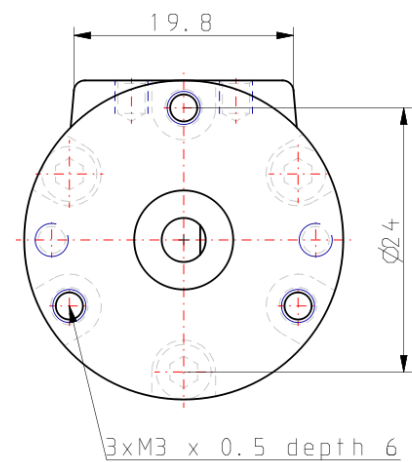
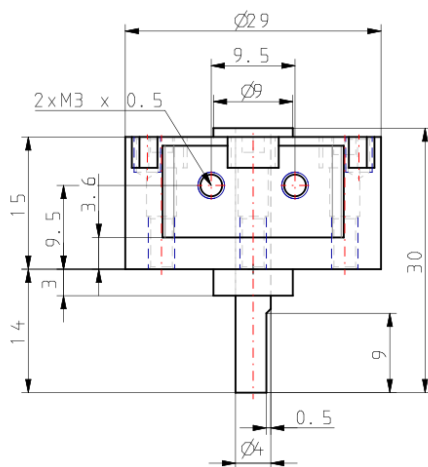
Semi-rotary actuator, double acting

Standard specifications

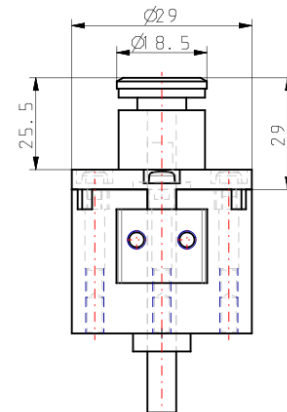
Magnet	None
Mounting	B (Basic)
Standard Shaft Type	W (Double Shaft with Single Flat)
Angle Adjusting Unit	None
Size	10
Rotation Angle - Vane	270S (Angle: 270 Single Vane)
Port	Side
Auto Switch	No Switch
Lead Wire or Prewired Connector	0.5m (Or None in the Case of No Switch)
Number	2 pcs. (Or None in the Case of No Switch)
Pressure medium	Air (Non-lube)
Maximum temperature of pressure medium	60 °C
Minimum temperature of pressure medium	5 °C
Maximum operating pressure	0.7 MPa
Minimum operating pressure	0.2 MPa
Proof pressure	1.05 MPa
Maximum ambient temperature	60 °C
Minimum ambient temperature	5 °C

Conform to the European RoHS Directive	Conform
Numero of pneumatic connections	2 pcs.
Pneumatic input connection	M3 x 0.5
Pneumatic exhaust connection	M3 x 0.5
Geometric form of the piston rod	Single rod
Rotation time adjustment range s/90°	0.03 to 0.3
Shaft load: Allowable radial load	15 N
Shaft load: Allowable thrust load	10 N
Weight	0.032 Kg

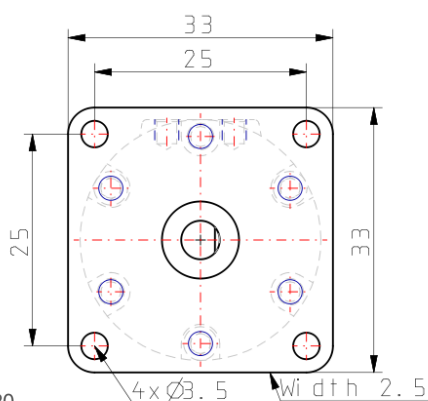
Dimensions



Shaft type W



Autoswitch detail



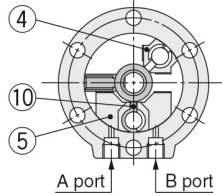
Flange detail

Constructions

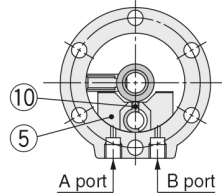
Single vane • Figures for 90° and 180° show the condition of the actuators when B port is pressurised, and the figure for 270° shows the position of the ports during rotation.

Size: 10, 15, 20, 30, 40

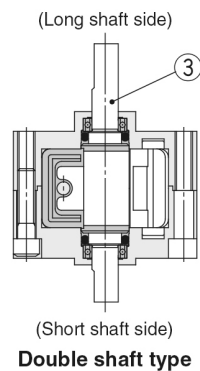
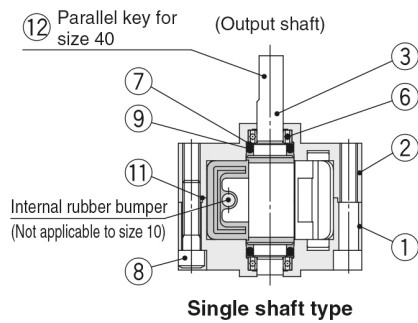
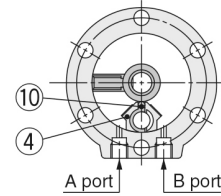
For 90°
(Viewed from the output shaft side)



For 180°
(Viewed from the output shaft side)



For 270°
(Viewed from the output shaft side)



Component Parts

No.	Description	Material	Note
1	Body (A)	Aluminium alloy	Painted
2	Body (B)	Aluminium alloy	Painted
3	Vane shaft	Stainless steel*	
4	Stopper	Resin	For 270°
5	Stopper	Resin	For 180°
6	Bearing	Bearing steel	
7	Back-up ring	Stainless steel	
8	Hexagon socket head cap screw	Chrome molybdenum	Special screw
9	O-ring	NBR	
10	Stopper seal	NBR	Special seal
11	O-ring	NBR	Size 40 only
12	Parallel key	Carbon steel	Size 40 only

* The material is chrome molybdenum steel for size 30 and 40.

Additional information

Catalogue

[CRB2-C_EU.pdf](#)