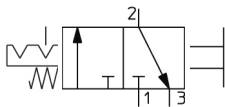


## Single Action - VHS VHS30-F02A

### Datasheet

### General series information

- **This product is being discontinued and will be replaced by VHS-D series. Update details here.**
- Modular connection type for connecting to FRL units
- Flow rate up to 8270 l/min
- Energy saving: zero air bleeding while switching the handle
- Safety measure: prevention of accidents caused by inadvertent air supply problems (OSHA standard compliant)
- With built-in silencer for EXH port as an option.



*Directional control valve 3/2-way valve, closed normal position With mechanical control spring, with mechanical component detent control Return with general manual control*

### Standard specifications

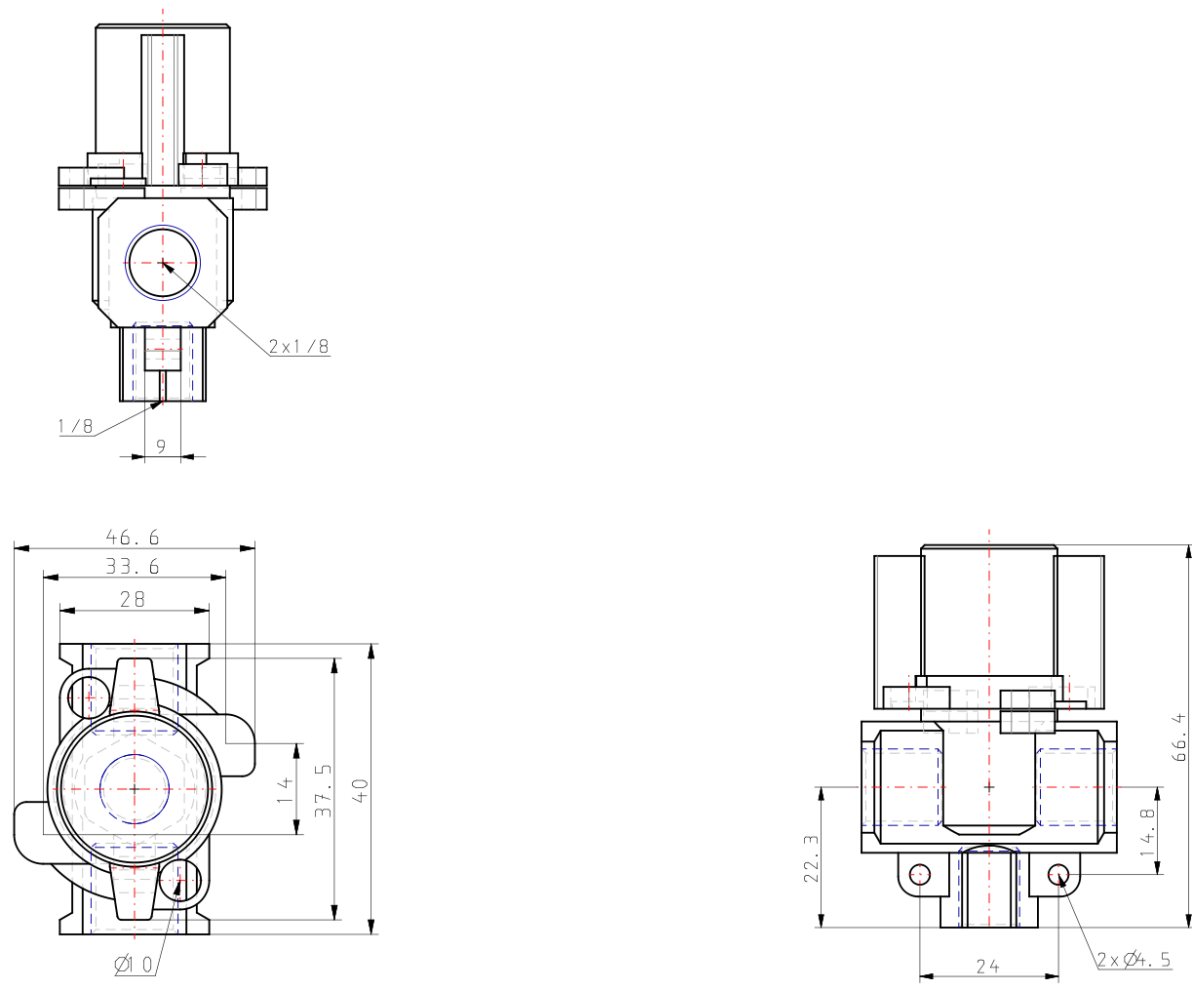
|                             |                            |
|-----------------------------|----------------------------|
| Body Size                   | 30                         |
| Thread                      | F (G)                      |
| Port Size                   | 02 (1/4)                   |
| Handle/Bonnet Material      | A (Flame Resistant PBT)    |
| Options                     | None                       |
| Semi-standard               | None                       |
| Made to Order               | None                       |
| Pressure medium             | Air                        |
| Maximum operating pressure  | 1.0 MPa                    |
| Minimum operating pressure  | 0.01 MPa                   |
| Proof pressure              | 1.5 MPa                    |
| Maximum ambient temperature | 60 °C                      |
| Minimum ambient temperature | -5 °C (No freezing)        |
| Approvals                   | No need                    |
| Paint colour                | Handle: Red<br>Body: White |
| Handle switching angle      | 90°                        |

Weight

0.134 Kg

---

## Dimensions



## Additional information

|                           |   |
|---------------------------|---|
| Catalogue                 | <a href="#">VHS-A_EU.pdf</a>  |
| Declaration of conformity | <a href="#">new_DoC_VHS_TF122-178EN.pdf</a><br><a href="#">newDoc_VHS-A_TF1V403EN-A.pdf</a> |
| Operation manuals         | <a href="#">OM_VHS_Q0023EN-C.pdf</a>  |