

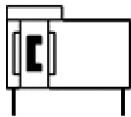
# MY3M, Mechanical Joint Rodless Cylinder, Slide Bearing Type, w/o Stroke Adjustment Unit

## MY3M16-200

Datasheet

### General series information

- w/o Stroke Adjustment Unit
- Work pieces can be loaded directly onto the work table, this is due to the integrated slide bearing guide.
- Also the loading capacity compared to MY3A & MY3B is improved.
- The unique oval shaped piston allows reduction in height and length as well as the practical arrangement of the common piping passages, cushion mechanism and positioning mechanism.
- This has achieved drastic miniaturisation and weight reduction.
- Overall length (Z) reduced by up to 104mm. (Ø63).
- Overall height (H) reduced by up to 28%. (Ø63).
- Overall weight reduced by up to 50%. (Ø16)
- Option for Rc, G or NPT type port threads. (Ø25 to Ø63)



Rodless cylinder mechanically joint with air cushion

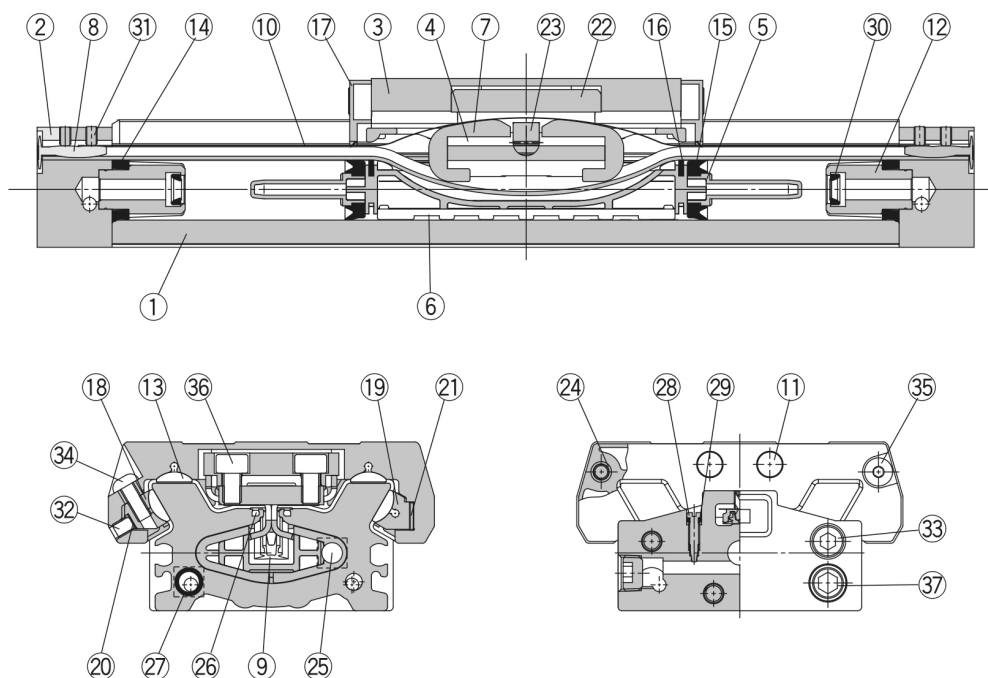
### Standard specifications

|  |   |
|--|---|
| Bore Size                              | ø16mm                                     |
| Thread Type                            | Rc: ø25, ø40, ø63/M thread: ø16           |
| Stroke                                 | 200                                       |
| Stroke Adjusting Unit                  | Left: w/o Unit; Right: w/o Unit           |
| Autoswitch                             | Without Autoswitch                        |
| Lead Wire or Prewired Connector        | 0.5m (Or None in the Case of No Switch)   |
| Number                                 | 2 pcs. (Or None in the Case of No Switch) |
| Proof pressure                         | 1.2 MPa                                   |
| Maximum ambient temperature            | 60 °C                                     |
| Minimum ambient temperature            | 5 °C                                      |
| Conform to the European RoHS Directive | Conform                                   |
| Type of cushioning                     | Air Cushion                               |

|                         |               |
|-------------------------|---------------|
| Lubrication             | Non-Lube      |
| Fluid                   | Air           |
| Stroke length tolerance | +1,8 ~ 0 mm   |
| Action                  | Double Acting |
| Weight                  | 0.610 Kg      |



## Constructions



### Component Parts

| No. | Description    | Material                   | Note          |
|-----|----------------|----------------------------|---------------|
| 1   | Cylinder tube  | Aluminum alloy             | Hard anodised |
| 2   | Head cover     | Aluminum alloy             | Hard anodised |
| 3   | Slide table    | Aluminum alloy             | Hard anodised |
| 4   | Piston yoke    | Stainless steel            |               |
| 5   | Piston         | Polyamide                  |               |
| 6   | Wear ring      | Polyacetal                 |               |
| 7   | Belt separator | Polyacetal                 |               |
| 8   | Belt clamp     | Polybutylene terephthalate |               |
| 11  | Stopper        | Carbon steel               | Nickel plated |
| 12  | Cushion boss   | Aluminum alloy             | Chromated     |
| 13  | Bearing        | Polyacetal                 |               |
| 16  | Inner wiper    | Special resin              |               |
| 17  | End cover      | Polyamide                  |               |
| 18  | Adjust arm A   | Aluminum alloy             | Chromated     |
| 19  | Adjust arm B   | Aluminum alloy             | Chromated     |

| No. | Description                      | Material                | Note                      |
|-----|----------------------------------|-------------------------|---------------------------|
| 20  | Backup spring                    | Stainless steel         |                           |
| 21  | Bearing adjustment rubber        | NBR                     |                           |
| 22  | Coupler body                     | Aluminum alloy          | Hard anodised             |
| 23  | Coupler pin                      | Carbon steel            | Electroless nickel plated |
| 24  | Spacer                           | Stainless steel         |                           |
| 25  | Magnet                           | —                       |                           |
| 26  | Seal magnet                      | Rubber magnet           |                           |
| 28  | Cushion needle                   | Rolled steel            | Nickel plated             |
| 31  | Hexagon socket head set screw    | Chrome molybdenum steel | Chromated                 |
| 32  | Hexagon socket head set screw    | Chrome molybdenum steel | Chromated                 |
| 33  | Hexagon socket head cap screw    | Chrome molybdenum steel | Chromated                 |
| 34  | Hexagon socket button head screw | Chrome molybdenum steel | Chromated                 |
| 35  | Hexagon socket button head screw | Chrome molybdenum steel | Chromated                 |
| 36  | Hexagon socket head cap screw    | Chrome molybdenum steel | Chromated                 |
| 37  | Hexagon socket head plug         | Carbon steel            | Chromated                 |

### Replacement Parts/Seal

| No. | Description    | Material              | Qty. | MY3M16                        | MY3M25                        | MY3M40                            | MY3M63                          |
|-----|----------------|-----------------------|------|-------------------------------|-------------------------------|-----------------------------------|---------------------------------|
| 9   | Seal belt      | Urethane<br>Polyamide | 1    | MY3B16-16C-Stroke             | MY3B25-16C-Stroke             | MY3B40-16C-Stroke                 | MY3B63-16A-Stroke               |
| 10  | Dust seal band | Stainless steel       | 1    | MY3B16-16B-Stroke             | MY3B25-16B-Stroke             | MY3B40-16B-Stroke                 | MY3B63-16B-Stroke               |
| 29  | O-ring         | NBR                   | 2    | KA00309<br>(ø4 x ø1.8 x ø1.1) | KA00309<br>(ø4 x ø1.8 x ø1.1) | KA00320<br>(ø7.15 x ø3.75 x ø1.7) | KA00402<br>(ø8.3 x ø4.5 x ø1.9) |
| 14  | Tube gasket    | NBR                   | 2    | MY3B16-PS                     | MY3B25-PS                     | MY3B40-PS                         | MY3B63-PS                       |
| 15  | Piston seal    | NBR                   | 2    |                               |                               |                                   |                                 |
| 27  | O-ring         | NBR                   | 4    |                               |                               |                                   |                                 |
| 30  | Cushion seal   | NBR                   | 2    |                               |                               |                                   |                                 |

## Additional information

|                   |                                      |
|-------------------|--------------------------------------|
| Catalogue         | <a href="#">MY3-Cc_EU.pdf</a>        |
| Operation manuals | <a href="#">OM_MY3_OM0013QEN.pdf</a> |