



D-MP, Actuator Position Sensor D-MP025C

Datasheet

General series information

- Measuring range: 25mm, 50mm, 100mm and 200mm.
- Applicable Cylinder: MB, CQ2, MGP, CXSJ, CP96, C96 and C55.
- Compatible IO-Link.
- Analogue output: Voltage output (0 to 10 [V]), Current output (4 to 20 [mA]).
- Analogue output can be reversed.
- Setting is available by simply touching the touch pad.
- Lead wire connection: Separate line, M8-4pin and M12-4 pin.

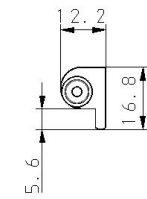
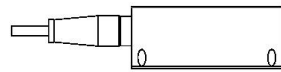
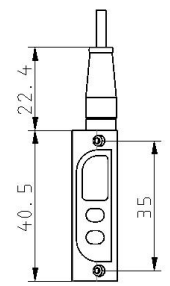
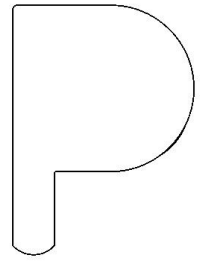
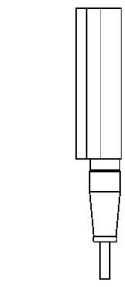
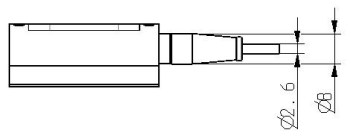
Standard specifications

Measuring Range	025 (25mm)
Lead Wire	C (M12-4 Pin, 0.3 m)
Maximum ambient temperature	60 °C
Minimum ambient temperature	-10 °C
General power supply	10 to 30 VDC
Protection class with connector	IP67
Internal voltage drop	2 V or less
Repeatability	0.1 mm (Ambient temperature: 25 °C)
Linearity	± 0.3 mm (Ambient temperature: 25 °C)
Current consumption	48 mA or less (when no load is applied)
Power supply voltage	15 to 30 VDC
Resolution	0.05 mm
Switch output	NPN or PNP
Maximum load current	40 mA
Analog current output	4 to 20 mA
Analog voltage output	0 to 10 V

Weight

0.025 Kg

Dimensions



Additional information

Catalogue	D-MP_-B_EU.pdf
Declaration of conformity	newDoC_D-MPxS_TF1Y231EN.pdf newDoC_D-MPxS_TF1X160EN.pdf newDoC_D-MPxS_TF1V390EN.pdf
Installation manuals	IM_D-MP_SMX03EN.pdf
Operation manuals	OM_D-MP_OMU0002EN-B.pdf