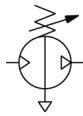


VBA2#A,4#A, Booster Regulator VBA20A-F03

Datasheet

General series information

- Service life increased.
- Noise reduced.
- Condensation reduced.
- Reliability improved.



Pneumatic booster regulator, handle operated

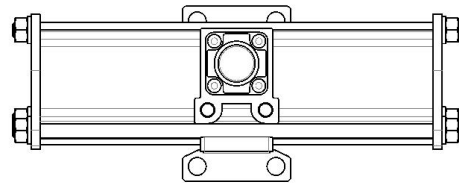
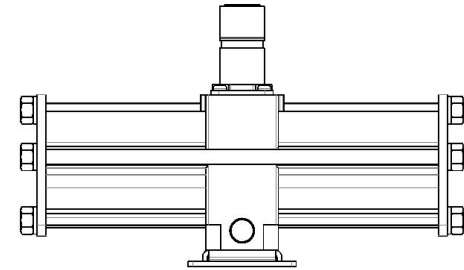
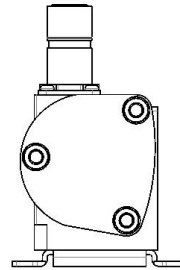
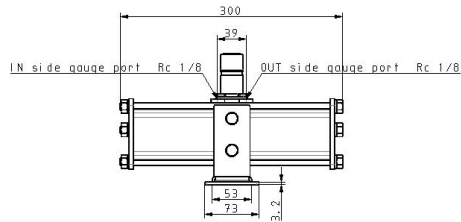
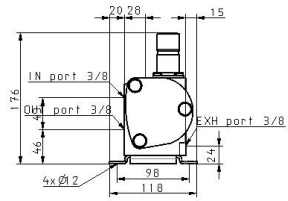
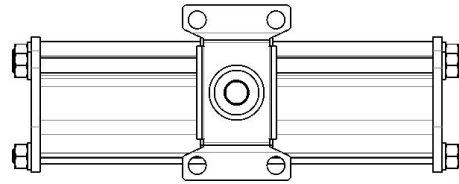
Standard specifications

| | |
|---------------------------------|---------------------------------------|
| Made to Order | Standard |
| Body Size | 20A (3/8, Handle-operated type) |
| Thread Type | F (G [PF]) |
| Port Size | 03 (3/8) |
| Option | None |
| Semi-standard | Standard |
| Pressure medium | Compressed Air |
| Maximum operating pressure | 1.0 MPa |
| Minimum operating pressure | 0.2 MPa |
| Proof pressure | 1.5 MPa |
| Maximum ambient temperature | 50 °C |
| Minimum ambient temperature | 2 °C (No freezing) |
| Approvals | No need |
| Number of pneumatic connections | 3 pcs. |
| Flow rate | 1000 l/min |
| Set pressure range | 0.2 to 1.0 MPa |
| Port size | Rc 3/8 |
| Pressure increase ratio | Twice |
| Pressure adjustment mechanism | Handle-operated with relief mechanism |

| | |
|---|-------------------|
| Supply pressure range (MPa) | 0.1 to 1.0 MPa |
| Pressure gauge port size (Rc) (IN/OUT: 2 locations) | 1/8 |
| Installation | Horizontal |
| Lubrication | Grease (Non-lube) |
| Weight | 3.800 Kg |

Specifications are subject to change without prior notice and any obligation on the part of the manufacturer.

Dimensions



Additional information

| | |
|-------------------|---|
| Catalogue | VBA-VBAT-Dd_EU.pdf |
| Operation manuals | OM_VBA-OM-L007_EN-E.pdf VBA_MM_M009GB-B.pdf MM_VBA20A_MM-L010EN-A.pdf VBA40A_MM_L004EN-B.pdf |