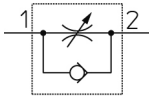


## In-line - AS\*2FS AS1002FS-06

Datasheet

### General series information

- Applicable Tubing O.D.: Ø 3.2 to Ø 12 mm and Ø 1/8" to Ø 1/2"
- Operating Pressure Range: 0.1 to 1 MPa.



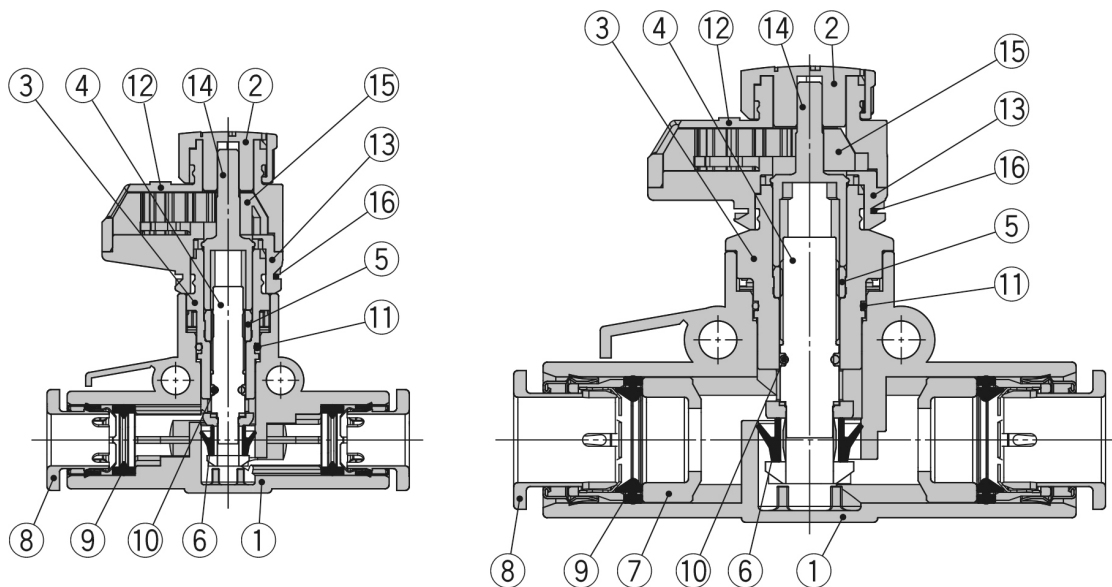
Flow control valve, adjustable, with reverse free flow

### Standard specifications

Body Size	100 (M5 Standard)
Indicator Direction	0°
Applicable Tube O.D.	06 (ø6)
Pressure medium	Air
Maximum operating pressure	1 MPa
Minimum operating pressure	0.1 MPa
Proof pressure	1.5 MPa
Maximum ambient temperature	60 °C
Minimum ambient temperature	-5 °C
Applicable tubing material	Nylon, Soft nylon, Polyurethane
Weight	0.006 Kg



## Constructions



### Component Parts

No.	Description	Material	Note
1	<b>Body A</b>	PBT	
2	<b>Knob</b>	POM	
3	<b>Body B</b>	PBT	
4	<b>Needle</b>	PBT	
5	<b>Needle guide</b>	Brass	Electroless nickel plating
6	<b>U-seal</b>	HNBR	
7	<b>Spacer</b>	PBT*1	
8	<b>Cassette</b>	—	
9	<b>Seal</b>	NBR	
10	<b>O-ring</b>	NBR	
11	<b>O-ring</b>	NBR	
12	<b>Bonnet A</b>	POM	
13	<b>Bonnet B</b>	POM	
14	<b>Gear</b>	PPS	
15	<b>Indicator gear</b>	POM	
16	<b>Clip</b>	Stainless steel	

\*1 The AS3002FS□-11, AS4002FS□-11, AS4002FS□-13 are made of electroless nickel plated brass.

## Additional information

Catalogue

[AS-FS-B\\_in-line\\_EU.pdf](#)