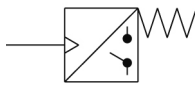


ISE70G, Pressure Sensor for General Fluids ISE78G-F02-L2

Datasheet

General series information

- Angled display.
- Rotating display.
- 3 setting modes.
- IO-Link Compatible.
- Pressure range: 0 to 50 MPa.



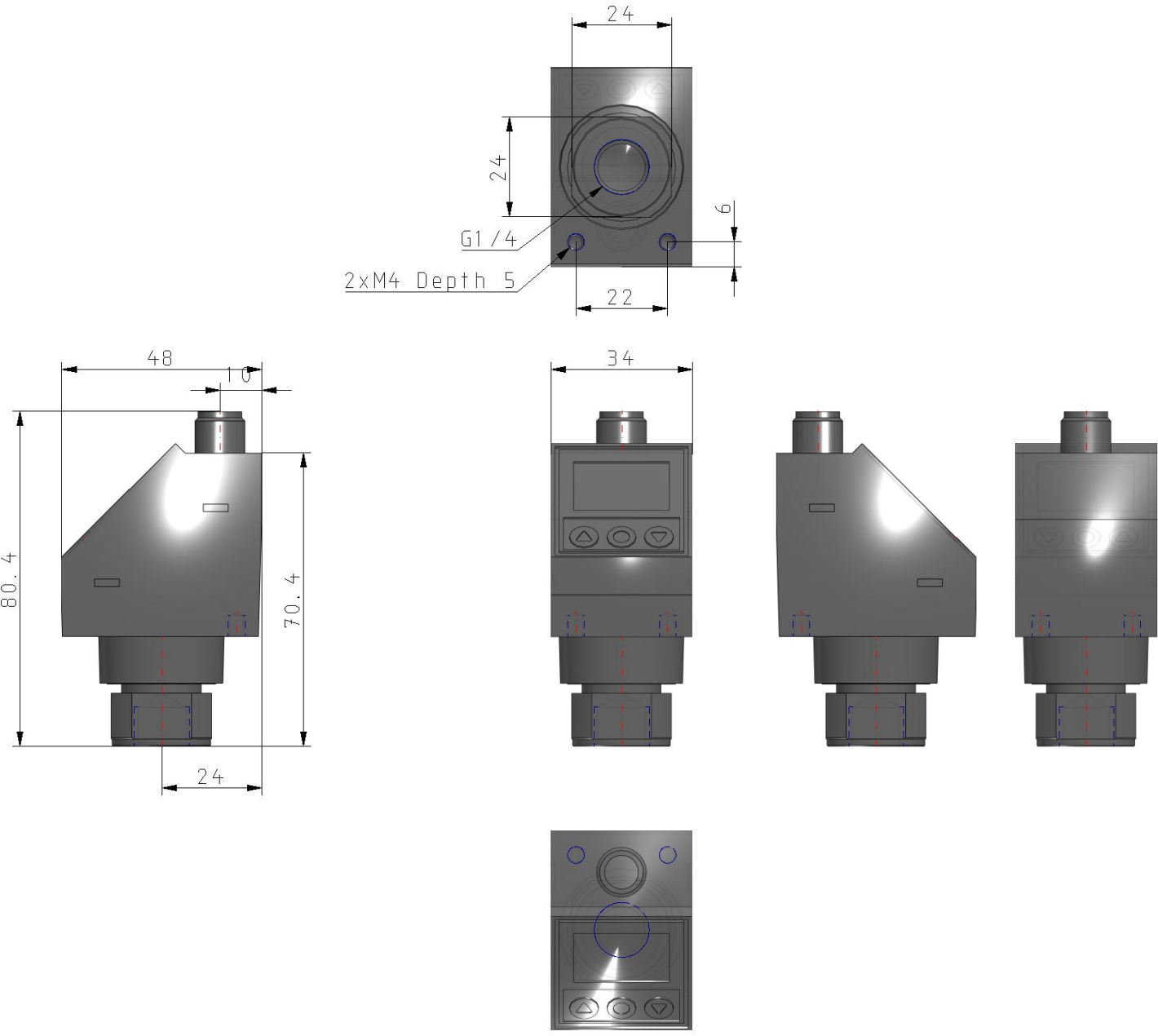
Non adjustable pressure switch

Standard specifications

Pressure Range	ISE78G (0 to 16 MPa)
Piping	F02 (G 1/4, ISO 1179-1)
Orifice	None
Unit Specification	w/Unit Selection Function
Lead Wire	None
Bracket	None
Operation Manual/Calibration Certificate	Operation Manual
Maximum ambient temperature	50 °C
Minimum ambient temperature	-5 °C
General power supply	18 to 30 VDC
Approvals	CE
Response time	1.5 s or less
Output type	IO-Link: Switch output 1 + Switch output 2
Current consumption	35 mA or less
Enclosure	IP67
Repeatability	±0.5 % F.S.
Applicable fluid	Liquid or gas that will not corrode materials of parts in contact with fluid

Rated pressure range	0 to 16.0 MPa
Withstand pressure	48.0 MPa
Number of screens	3-screen display
Weight	0.000 Kg

Dimensions



Additional information

Catalogue	ISE7xG-C_EU.pdf
Declaration of conformity	newDoC_ISE7xG_TF1Y083EN.pdf
Installation manuals	IM_ISE79S_TF2Z438EN.pdf IM_ISE7xG_TF2Z015EN-A.pdf
Operation manuals	OM_ISE7xG_OMV0009EN-E.pdf OM_ISE79_OMY0007EN-A.pdf ISE7xG_quickguide.pdf