

## Standard Type - LEY LEY16C-100

### Datasheet

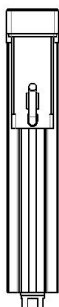
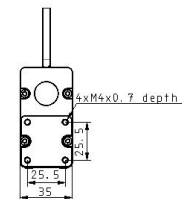
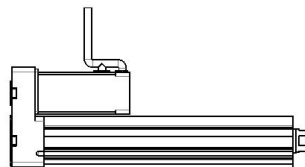
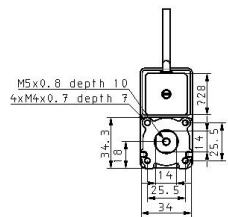
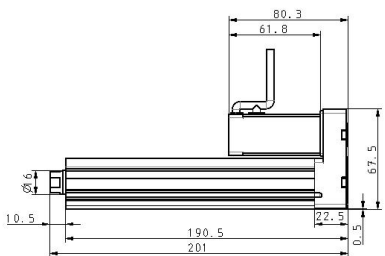
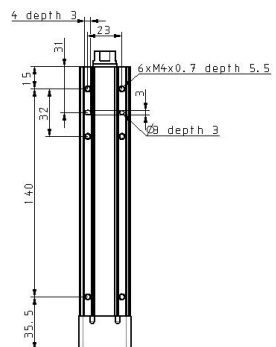
- Body size: 16, 25, 32 and 40 mm
- Stroke: 30 to 500 mm
- Step and servo motor types.

### Standard specifications

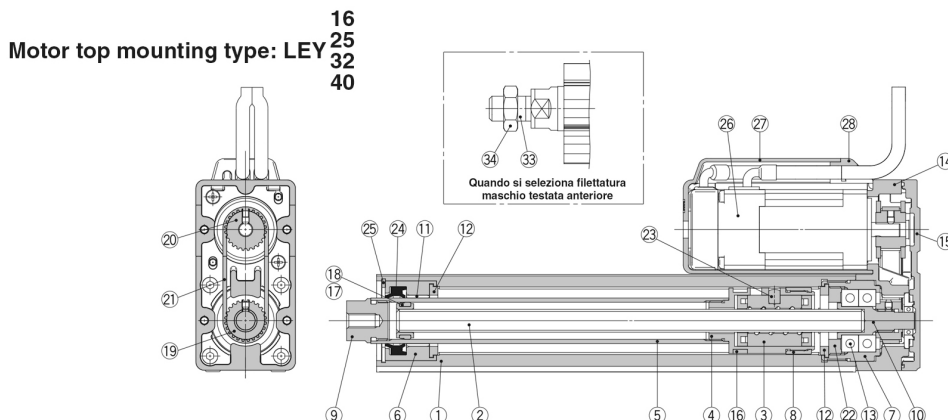
Size	16
Motor Mounting Position	Top
Motor	Step Motor (Servo 24 VDC)
Lead Screw	C (Size 16: 2.5mm, Size 25: 3mm, Size 32: 4mm)
Stroke	100mm
Motor Option	None
Rod End Thread	Female
Mounting	Both Ends Tapped (Standard)
Actuator Cable	Without Cable
Actuator Cable Length	Without Cable
Controller	Without Controller
I/O Cable Length	Without Cable
Protocol	None
Suffix	None
Controller Mounting	Screw
Option/JXC Cable Length	None
Maximum ambient temperature	40 °C
Minimum ambient temperature	5 °C
General power supply	24 VDC ±10 %
Conform to the European RoHS Directive	Not conform
Approvals	UL/cUL;CE

Piston rod end	External thread
Male thread of rod end	M8 x 1.25
Pushing speed	50 mm/s or less
Positioning repeatability	± 0.02 mm
Lost motion	0.1 mm or less
Impact/Vibration resistance	50/20 m/s <sup>2</sup>
Encoder	Incremental A/B phase (800 pulse/rotation)
Vertical work load	8 kg
Speed	4 - 125 mm/s
Max. Acceleration/deceleration	3000 mm/s <sup>2</sup>
Pushing force	51 - 141 N
Weight	0.730 Kg

# Dimensions



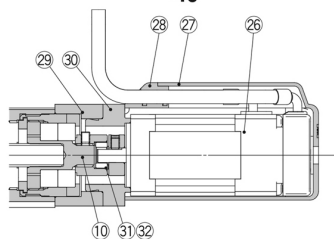
## Constructions



### Motor top/parallel type With lock/motor cover



### In-line motor type: LEY 16 25 32 40



### In-line motor type: With lock/motor cover



#### Component Parts

No.	Description	Material	Note
1	Body	Aluminium alloy	Anodised
2	Ball screw (shaft)	Alloy steel	
3	Ball screw nut	Resin/Alloy steel	
4	Piston	Aluminium alloy	
5	Piston rod	Stainless steel	Hard chrome plating
6	Rod cover	Aluminium alloy	
7	Housing	Aluminium alloy	
8	Rotation stopper	POM	
9	Socket	Free cutting carbon steel	Nickel plating
10	Connected shaft	Free cutting carbon steel	Nickel plating
11	Bushing	Lead bronze cast	
12	Bumper	Urethane	
13	Bearing	—	
14	Return box	Aluminium die-cast	Coating
15	Return plate	Aluminium die-cast	Coating
16	Magnet	—	
17	Wear ring holder	Stainless steel	Stroke 101 mm or more
18	Wear ring	POM	Stroke 101 mm or more
19	Screw shaft pulley	Aluminium alloy	
20	Motor pulley	Aluminium alloy	
21	Belt	—	
22	Bearing stopper	Aluminium alloy	
23	Parallel pin	Stainless steel	
24	Seal	NBR	
25	Retaining ring	Steel for spring	Phosphate coated

No.	Description	Material	Note
26	Motor	—	
27	Motor cover	Synthetic resin	Only "With motor cover"
28	Grommet	Synthetic resin	Only "With motor cover"
29	Motor block	Aluminium alloy	Anodised
30	Motor adapter	Aluminium alloy	Anodised/LEY16, 25 only
31	Hub	Aluminium alloy	
32	Spider	NBR	
33	Socket (Male thread)	Free cutting carbon steel	Nickel plating
34	Nut	Alloy steel	
35	Motor cover with lock	Aluminium alloy	Only "With lock/motor cover"
36	Cover support	Aluminium alloy	Only "With lock/motor cover"

## Additional information

Catalogue	<a href="#">LEY-Dd_EU.pdf</a>
Declaration of conformity	<a href="#">newDoc_LEY_LEYG_stepDC-servoDC_EN-A.pdf</a>
Installation manuals	<a href="#">IM_LEY_StepDC_EN-C.pdf</a> <a href="#">IM_LEY_ServoDC_EN-B.pdf</a>
Operation manuals	<a href="#">OM_LEY_LEYG_StepDC_LEC_EN.pdf</a> <a href="#">OM_LEY_LEYG_stepDC_servoDC_EN.pdf</a>