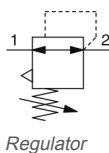


## AR20-D to AR60-D, Regulator & Regulator w/Backflow Function AR30-F03-1-D

### Datasheet

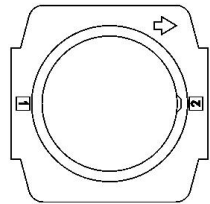
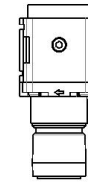
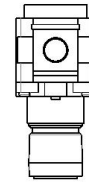
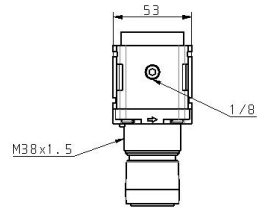
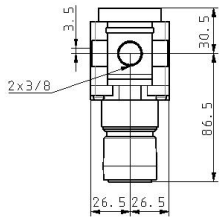
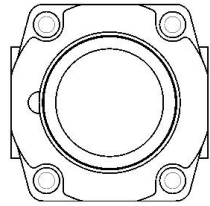
- ISO 8573-1:2010 compliant
- Up to 0.85 MPa set pressure
- Maximum flow rate up to 5000 l/min (ANR, 0.7MPa).



### Standard specifications

Body Size	30
Backflow Function	None
Thread	F (G)
Port Size	03 (3/8)
Options	w/o Mounting Option
Set pressure	1 (0.02 to 0.2 MPa setting)
Exhaust Mechanism	Relieving
Flow Direction	Left to Right
Knob	Downward
Pressure Units	Standard (Name Plate, Caution Plate for Bowl, and Pressure Gauge: MPa)
Construction	Relieving type
Pressure medium	Air
Maximum temperature of pressure medium	60 °C
Minimum temperature of pressure medium	-5 °C (with no freezing)
Maximum operating pressure	1.0 MPa
Proof pressure	1.5 MPa
Maximum ambient temperature	60 °C
Minimum ambient temperature	-5 °C (with no freezing)

# Dimensions



## Additional information

Catalogue

[ACD-C\\_EU.pdf](#)

Operation manuals

[OM\\_AR20-60-D\\_OMX0055EN-A.pdf](#)