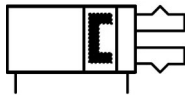


Original design - MHL2 MHL2-16D

Datasheet

General series information

- Maximum gripping force per finger 396 N at 0.5 MPa
- Double acting
- Repeatability: ± 0.1 mm
- Max. operating frequency: 60 c.p.m.

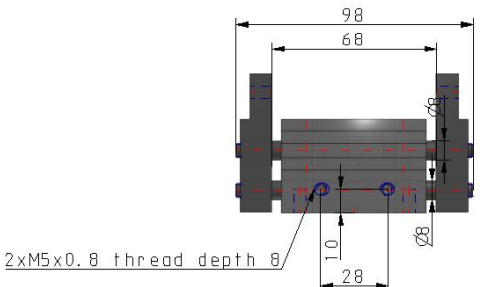


Gripper, internal grip, double-acting with permanent magnet on piston

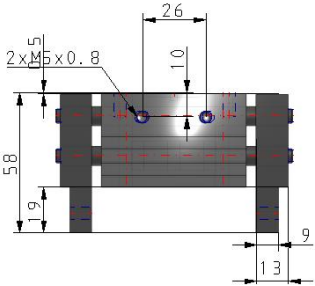
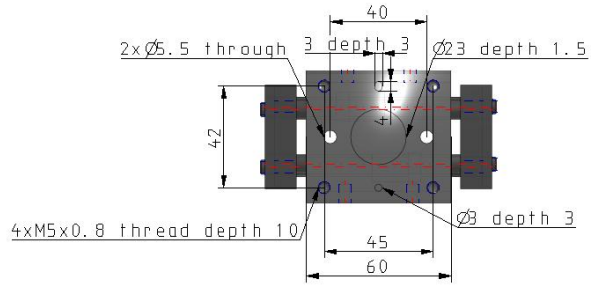
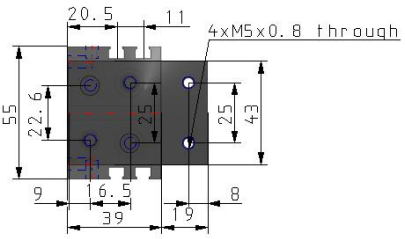
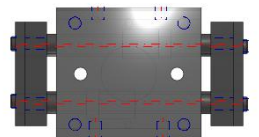
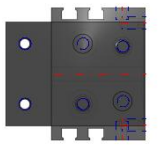
Standard specifications

Bore Size	16mm
Thread	(M5 Thread-10~25mm)(Rc-32~40mm)
Opening & Closing Stroke	Standard
Auto Switch	No Switch
Lead Wire or Prewired Connector	0.5m (Or None in the Case of No Switch)
Number	2 pcs. (Or None in the Case of No Switch)
Maximum operating pressure	0.6 MPa
Minimum operating pressure	0.1 Mpa
Maximum ambient temperature	60 °C
Minimum ambient temperature	-10 °C
Repeatability	± 0.1 mm
Lubrication	Not required
Effective holding force per finger (0.5 MPa)	45 N
Fluid	Air
Max. operating frequency	60 c.p.m.
Action	Double Acting
Gripping point distance	40 mm
Weight	0.585 Kg

Dimensions



2xM5x0.8 thread depth 8



Additional information

Catalogue	MHL2_EU.pdf
Operation manuals	OM_MHL2_OMC0028EN.pdf