

KK130P-*M, S-Couplers, Male Thread

KK130P-04MS

Datasheet

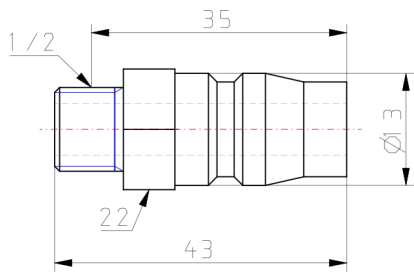
General series information

- Male thread.
- Applicable Port Size: R1/8, R1/4, R3/8, R1/2, NPT1/8, NPT1/4, NPT3/8, NPT1/2.

Standard specifications

Piping Port Size	R 1/2
Pressure medium	Air
Maximum operating pressure	1.5 MPa
Minimum operating pressure	0 MPa
Proof pressure	2 MPa
Maximum ambient temperature	80 °C
Minimum ambient temperature	-20 °C (with no freezing)
Sealing principle	Male thread with sealant
Plating	Sleeve: Electroless nickel plated Other external metal parts: Zinc chromated
Weight	0.054 Kg

Dimensions



Additional information

Catalogue

[KK130-B_EU.pdf](#)