

ITV2000/3000, Electro-Pneumatic Regulator

ITV2050-01F2BN3

Datasheet

- Controls air pressure in proportion to an electric signal.
- Available in MPa, kgf/cm², bar, PSI, and kPa units.
- Pressure range of 0.005 to 0.9MPa.
- Available port sizes 1/4 and 3/8.
- Mounting bracket option.

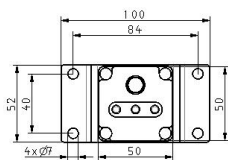
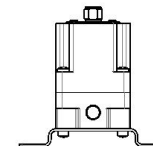
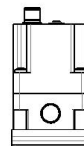
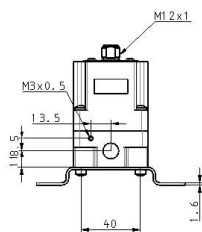
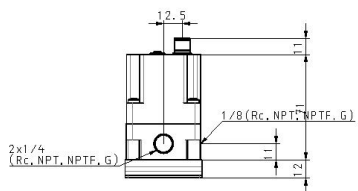
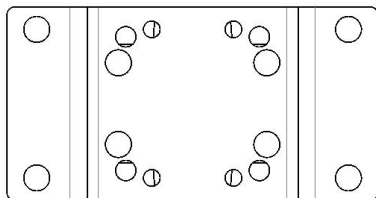
Electro-pneumatic regulator

Standard specifications

Model	20 (1500 L/min)
Pressure Range	5 (0.005~0.9MPa)
Power Voltage	0 (24VDC)
Input Signal	0 (Current Style 4~20mADC; Requires Sourcing Type PLC Input Module)
Monitor Output	1 (Analogue Output 1~5VDC)
Thread	F (G[PF])
Port Size	2 (1/4 [2000,3000])
Accessory	B (Flat Bracket)
Cable Connector	N (w/oCable Connector)
Pressure Display Unit	3 (Bar)
Options	None
Maximum temperature of pressure medium	50 °C
Minimum temperature of pressure medium	0 °C
Maximum operating pressure	1.0 MPa
Minimum operating pressure	0.1 MPa
Maximum ambient temperature	50 °C
Minimum ambient temperature	0 °C
Approvals	CE

Protection class with connector	IP65
Flow rate of secondary exhaust	1500 NI/min
Min. supply pressure	Set pressure +0.1 MPa
Accuracy	±2%F.S. ±1 digit
Output signal Analogue	1 to 5 VDC (Output impedance: Approximately 1 kΩ) Output accuracy within ±6% (Full span)
Weight	0.350 Kg

Dimensions



Additional information

Catalogue	ITV-Ff_EU.pdf
Declaration of conformity	DoC_ITVx_TF00023-B.pdf newDoC_ITV2000_3000_TF1Y106EN.pdf newDoC_ITV2000_3000_TF1V093EN.pdf
Installation manuals	IMM_ITV3000_54GB-A.PDF IMM_ITVx_TF112GB-A.pdf
Operation manuals	OM_ITV2_DeviceNet_EN-B.pdf OM_ITV2_PROFIBUS-DP_EN.pdf OM_ITV2_CC-Link_EN-A.pdf OM_ITV2_OM00068EN-C.pdf OM_ITV2_RS-232C_EN.pdf OM_ITV2_OM00109EN-C.pdf OM_ITV2_OM00112EN-C.pdf