

C(D)85, ISO Standard Cylinder, Double Acting, Single Rod C85N16-25-XB6

Datasheet

General series information

- Double acting, single rod, crimped cylinder
- Conforms to ISO 6432 and CETOP RP52P
- Bore sizes (mm): 8, 10, 12, 16, 20, 25
- Standard strokes up to 300mm
- Auto switch capable



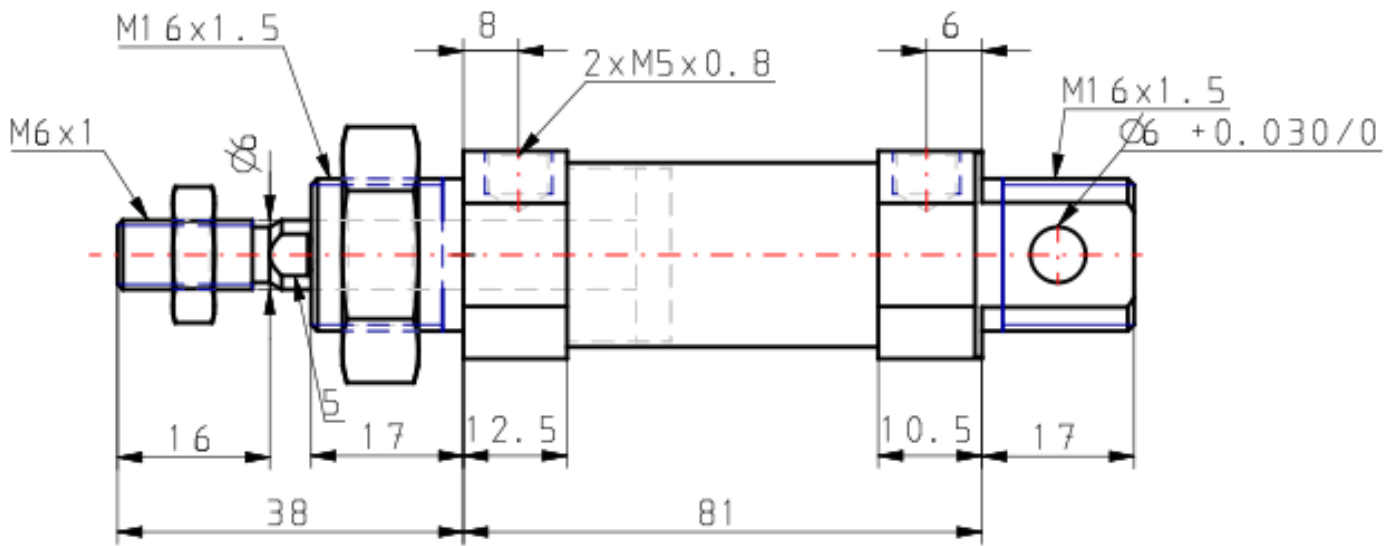
Double-acting, single-rod cylinder

Standard specifications

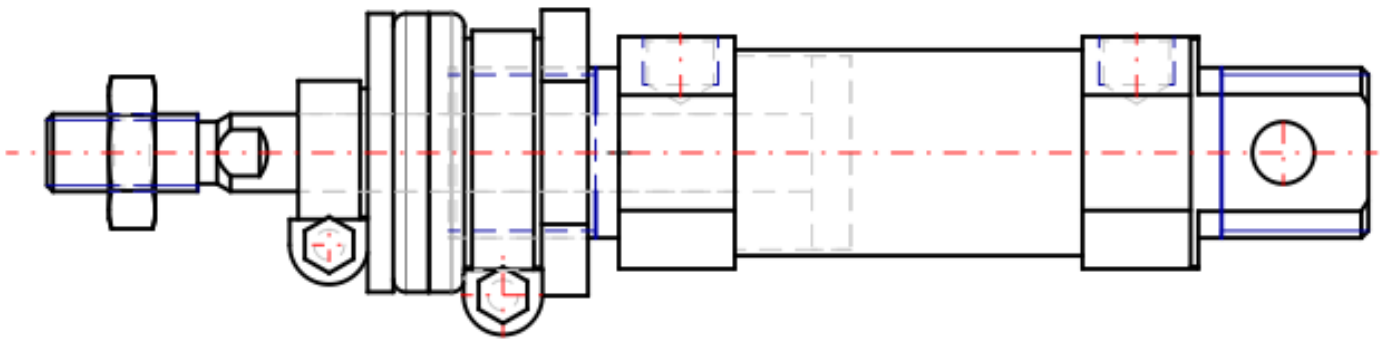
| | |
|--|---|
| Magnet | None |
| Mounting | N (Basic Integrated Clevis) |
| Bore Size | Ø16 mm |
| Stroke | 25 |
| Cushion | Rubber Cushion |
| Rod Boot | None |
| Auto Switch Mounting Type | None |
| Auto Switch | No Switch |
| Lead Wire or Prewired Connector | 0.5m (Or None in the Case of No Switch) |
| Number | 2 pcs. (Or None in the Case of No Switch) |
| Rod End Options | None |
| Temperature Resistance | Heat Resistant Cylinder |
| Low Speed | None |
| Stainless Steel | None |
| Long Stroke | None |
| Pressure medium | Compressed Air |
| Maximum temperature of pressure medium | 80 °C |
| Maximum temperature of pressure medium with magnet | 60 °C |

| | |
|---|-------------------------------|
| Minimum temperature of pressure medium | -20 °C [without condensation] |
| Minimum temperature of pressure medium with magnet | -10 °C [without condensation] |
| Maximum operating pressure | 1 MPa |
| Minimum operating pressure | 0.05 MPa |
| Proof pressure | 1.5 MPa |
| Maximum ambient temperature | 80 °C |
| Maximum ambient temperature with magnet | 60 °C |
| Minimum ambient temperature | -20 °C |
| Minimum ambient temperature with magnet | -10 °C |
| Number of pneumatic connections | 2 pcs. |
| Pneumatic input connection | M5 |
| Pneumatic output connection | M5 |
| Mode of operation of drive | Double acting |
| Theoretical cylinder force, advance stroke (at 0.5 MPa) | 100.6 N |
| Theoretical cylinder force, return stroke (at 0.5 MPa) | 86.4 N |
| Maximum piston speed | 1,500 mm/s |
| Type of cushioning | Rubber bumper |
| Piston rod end | External thread |
| Geometric form of the piston rod | Single rod |
| Male thread of rod end | M6 |
| Usable tubing material | Soft nylon;Nylon;Polyurethane |
| Minimum piston speed | 50 mm/s |

Dimensions



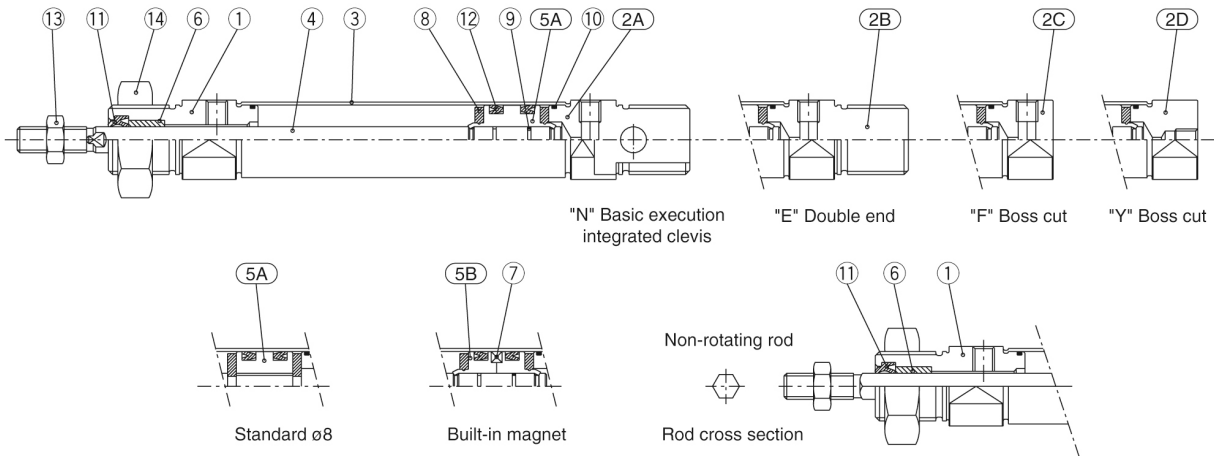
($\varnothing 20$, $\varnothing 25$)



Constructions

Double acting: Single rod

C□85□8 to16 Rubber bumper (Disassembly is not possible)



Component Parts

| No. | Description | Material | Quantity | Remarks |
|-----|---------------|-----------------|----------|-----------------------|
| ① | Rod cover | Aluminum alloy | 1 | White anodized |
| ②A | Head cover N | Aluminum alloy | 1 | White anodized |
| ②B | Head cover E | Aluminum alloy | 1 | White anodized |
| ②C | Head cover F | Aluminum alloy | 1 | White anodized |
| ②D | Head cover Y | Aluminum alloy | 1 | White anodized |
| ③ | Cylinder tube | Stainless steel | 1 | |
| ④ | Piston rod | Stainless steel | 1 | |
| ⑤A | Piston A | Brass | 1 | |
| ⑤B | Piston B | Brass | 2 | (Switch style piston) |

| No. | Description | Material | Quantity | Remarks |
|-----|---------------|-----------------|----------|----------------------|
| ⑥ | Bushing | Sintered bronze | 1 | |
| ⑦ | Magnet | | 1 | (Switch style only) |
| ⑧ | Bumper | Urethane | 2 | |
| ⑨ | Piston gasket | NBR | 1 | (2 for switch style) |
| ⑩ | Tube gasket | NBR | 2 | |
| ⑪ | Rod seal | NBR | 1 | |
| ⑫ | Piston seal | NBR | 2 | |
| ⑬ | Rod end nut | Carbon steel | 1 | Nickel plated |
| ⑭ | Mounting nut | Carbon steel | 1 | Nickel plated |

Additional information

Catalogue

[C85_C75-A_EU.pdf](#)