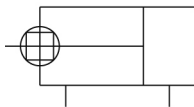


C(D)85K, ISO Cylinder, Double Acting, Single Rod, Non-Rotating CD85KN25-300-B

Datasheet

General series information

- ISO cylinder, double acting, single rod
- Bore sizes (mm): 8, 10, 12, 16, 20, 25
- Type: non-rotating
- Cushion: rubber bumper only
- Strokes (mm): up to 300 (depending on bore)
- Auto switches available (order separate)



Double-acting cylinder, non-rotating single piston rod

Standard specifications

| | |
|----------------------------------------------------|-------------------------------------------|
| Magnet | D (Built-in) |
| Mounting | N (Basic Integrated Clevis) |
| Bore Size | Ø25 mm |
| Stroke | 300 |
| Switch Mounting | B (Band) |
| Auto Switch | No Switch |
| Lead Wire or Prewired Connector | 0.5m (Or None in the Case of No Switch) |
| Number | 2 pcs. (Or None in the Case of No Switch) |
| Rod End Options | None |
| Made of Stainless Steel | None |
| Long Stroke | None |
| Pressure medium | Compressed air |
| Maximum temperature of pressure medium with magnet | 60 °C |
| Minimum temperature of pressure medium with magnet | -10 °C |
| Maximum operating pressure | 1 MPa |
| Minimum operating pressure | 0.05 MPa |
| Proof pressure | 1.5 MPa |

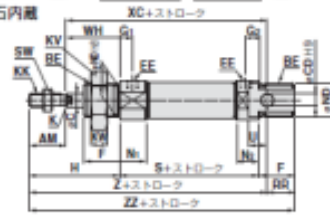
| | |
|---------------------------------------------------------|-----------------|
| Maximum ambient temperature with magnet | 60 °C |
| Minimum ambient temperature with magnet | -10 °C |
| Number of pneumatic connections | 2 pcs. |
| Pneumatic input connection | G 1/8 |
| Pneumatic output connection | G 1/8 |
| Mode of operation of drive | Double acting |
| Theoretical cylinder force, advance stroke (at 0.5 MPa) | 245.5 N |
| Theoretical cylinder force, return stroke (at 0.5 MPa) | 206.2 N |
| Maximum piston speed | 1500 mm/s |
| Type of cushioning | Rubber bumper |
| Piston rod end | External thread |
| Geometric form of the piston rod | Single rod |
| Male thread of rod end | M10 x 1.25 |
| Tolerance of torsion | ±0° 42' |
| Weight | 0.627 Kg |

Dimensions

振動・片ロッド

ラバークッション：C□85N(チューブ内蔵)→ストローク□

磁石なし/磁石内蔵



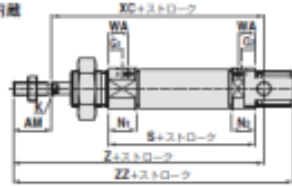
レール取付(A)



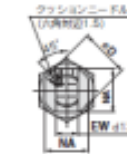
●バンド取付(B)
●磁石なし

エアクッション：C□85N(チューブ内蔵)→ストロークC□

磁石なし/磁石内蔵

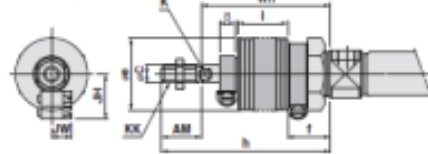


レール取付(A)

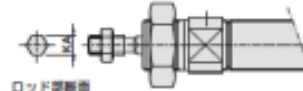


●バンド取付(B)
●磁石なし

ジャバラ付



C□85KN
ロッド回り止め形(ラバークッションのみ)



ロッド断面

寸法表

| シリーズ | AM | BE | C | CD | D | EE | EF | F | G | G ₁ | H | HR | K | KA | KK | KV | KW | N ₁ | N ₂ | NA | NC | RR | S | SW | U | WA | WH | XC | Z | ZZ |
|------|----|----------|------|------|------|------|----|----|----|----------------|---|------|----------|----|----|------|------|----------------|----------------|----|----|----|----|-----|----|-----|-----|-----|---|----|
| 8 | 12 | M7×1.25 | 4.4 | 16.2 | φ5.0 | 8.7 | 7 | 5 | 28 | 10 | — | 4.2 | M4×0.7 | 10 | 8 | 11.5 | 9.5 | 15 | 12 | 10 | 46 | 7 | 4 | — | 10 | 64 | 75 | 86 | — | |
| 10 | 12 | M12×1.25 | 4.4 | 16.2 | φ5.0 | 8.7 | 7 | 5 | 28 | 10 | — | 4.2 | M4×0.7 | 10 | 8 | 11.5 | 9.5 | 15 | 12 | 10 | 46 | 7 | 4 | — | 10 | 64 | 75 | 86 | — | |
| 12 | 16 | M6×1.5 | 6.6 | 19.2 | φ5.0 | 12.7 | 17 | 10 | 33 | 14 | — | 6.2 | M5×1 | 24 | 8 | 15.5 | 13.5 | 18.3 | 14 | 14 | 52 | 10 | 9 | 9.2 | 22 | 72 | 111 | 100 | — | |
| 16 | 16 | M6×1.5 | 6.6 | 19.2 | φ5.0 | 12.7 | 17 | 10 | 33 | 14 | — | 6.2 | M5×1 | 24 | 8 | 15.5 | 13.5 | 18.3 | 14 | 14 | 52 | 10 | 9 | 9.2 | 22 | 72 | 111 | 100 | — | |
| 20 | 20 | M22×1.5 | 8.8 | 28 | φ7.0 | 16.0 | 20 | 12 | 44 | 17 | — | 8.2 | M6×1.25 | 32 | 11 | 21.7 | 19.7 | 24 | 22 | 11 | 62 | 13 | 12 | 13 | 24 | 95 | 115 | 126 | — | |
| 25 | 22 | M22×1.5 | 10.8 | 31.2 | φ7.0 | 16.0 | 20 | 12 | 44 | 17 | — | 10.2 | M10×1.25 | 40 | 13 | 25.7 | 23.7 | 28 | 23 | 11 | 65 | 17 | 12 | 13 | 28 | 104 | 126 | 137 | — | |

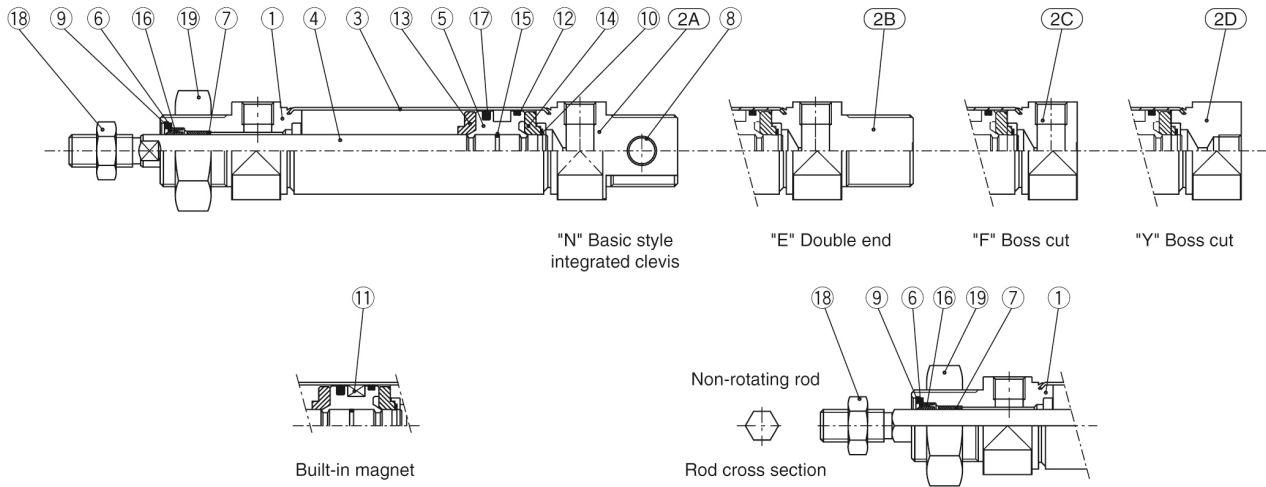
() 内はエアクッションの寸法。

ジャバラ付

| シリーズ | AM | C | e | f | K | KK | h | | | | | | | | | |
|------|------|------|------|------|----|----------|------|--------|---------|---------|---------|---------|---------|---------|---------|-----|
| | | | | | | | 1~50 | 51~100 | 101~150 | 151~200 | 201~300 | 301~400 | 401~500 | | | |
| 8 | 20 | 8 | 38 | 20 | 8 | M5×1.25 | 71 | 84 | 95 | 104 | 134 | 159 | — | | | |
| | 25 | 22 | 10 | 38 | 20 | M10×1.25 | 74 | 87 | 99 | 112 | 137 | 162 | 187 | | | |
| 12 | AM | C | e | f | K | KK | JW | JW | Wh | | | | | | | |
| | | | | | | | | | 1~50 | 51~100 | 101~150 | 151~200 | 201~300 | 301~400 | 401~500 | |
| 20 | 12.5 | 25 | 37.5 | 50 | 75 | 100 | — | 23.5 | 10.5 | 51 | 64 | 76 | 89 | 114 | 139 | — |
| | 25 | 12.5 | 25 | 37.5 | 50 | 75 | 100 | 125 | 23.5 | 10.5 | 52 | 65 | 77 | 90 | 115 | 140 |

Constructions

C□85□20, 25 Rubber bumper



Component Parts

| No. | Description | Material | Quantity | Remarks |
|-----|---------------|-----------------|----------|--------------------|
| ① | Rod cover | Aluminum alloy | 1 | White anodized |
| ②A | Head cover N | Aluminum alloy | 1 | White anodized |
| ②B | Head cover E | Aluminum alloy | 1 | White anodized |
| ②C | Head cover F | Aluminum alloy | 1 | White anodized |
| ②D | Head cover Y | Aluminum alloy | 1 | White anodized |
| ③ | Cylinder tube | Stainless steel | 1 | |
| ④ | Piston rod | Carbon steel | 1 | Hard chrome plated |
| ⑤ | Piston | Aluminum alloy | 1 | Chromated |
| ⑥ | Plain washer | Carbon steel | 1 | Nickel plated |
| ⑦ | Bushing | Sintered bronze | 1 | |
| ⑧ | Bushing | Sintered bronze | 2 | |

* Stainless steel (Non-rotating rod)

| No. | Description | Material | Quantity | Remarks |
|-----|----------------|----------------|----------|---------------------|
| ⑨ | Retaining ring | Carbon steel | 1 | Nickel plated |
| ⑩ | Retaining ring | Carbon steel | 2 | |
| ⑪ | Magnet | | 1 | (Switch style only) |
| ⑫ | Wear ring | Phenolic resin | 1 | |
| ⑬ | Bumper A | Urethane | 1 | |
| ⑭ | Bumper B | Urethane | 1 | |
| ⑮ | Piston gasket | NBR | 1 | |
| ⑯ | Rod seal | NBR | 1 | |
| ⑰ | Piston seal | NBR | 1 | |
| ⑱ | Rod end nut | Carbon steel | 1 | Nickel plated |
| ⑲ | Mounting nut | Carbon steel | 1 | Nickel plated |

Additional information

Catalogue

[C85_C75-A_EU.pdf](#)