

## ITV1000/2000/3000, Electro-Pneumatic Regulator ITV2050-31F3N

Datasheet

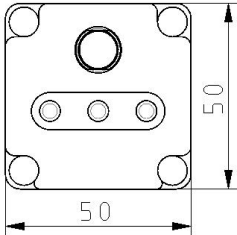
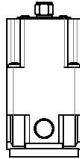
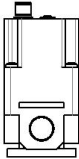
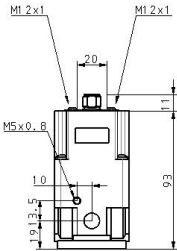
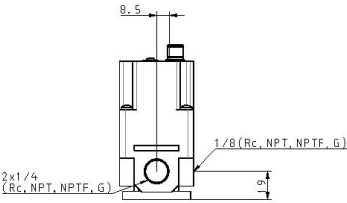
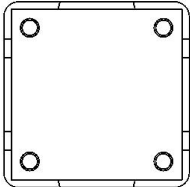
### General series information

- Pressure range: 0.005 to 0.9 MPa
- Maximum flow rate: 4000 l/min (ANR)
- Port sizes: 1/8, 1/4, 3/8, 1/2
- Applicable fieldbus protocols: IO-Link, CC-Link, DeviceNet™, PROFIBUS, RS-232C.

### Standard specifications

Model	20 (1500 L/min)
Pressure Range	5 (0.005~0.9MPa)
Power Voltage	0 (24VDC)
Input Signal	3 (Voltage Style 0~10VDC)
Monitor Output	1 (Analogue Output 1~5VDC)
Thread	F (G[PF])
Port Size	3 (3/8 [2000,3000])
Accessory	None
Cable Connector	N (w/oCable Connector)
Pressure Display Unit	MPa
Options	None
Maximum temperature of pressure medium	50 °C
Approvals	CE
Maximum ambient temperature	50 °C
Minimum temperature of pressure medium	0 °C
Protection class with connector	IP65
Minimum ambient temperature	0 °C
Weight	0.350 Kg

# Dimensions



## Additional information

Catalogue	<a href="#">ITV-G_EU.pdf</a>
Declaration of conformity	<a href="#">newDoC_ITVx000-G_EN.pdf</a> <a href="#">newDoC_ITVx000-H_EN.pdf</a> <a href="#">newDoC_ITVx000_IO-Link-EN.pdf</a> <a href="#">DoC_ITVx_TF00023-B.pdf</a>
Installation manuals	<a href="#">IM_ITVx000_EN-A.pdf</a> <a href="#">IM_ITVx000-IO-Link_EN.pdf</a> <a href="#">IM_ITV3000_EN-A.pdf</a>
Operation manuals	<a href="#">OM_ITVx000-IO-Link_EN.pdf</a> <a href="#">OM_ITVx000-60_EN-C.pdf</a> <a href="#">OM_ITVx000-CC-Link_EN-B.pdf</a> <a href="#">OM_ITVx000-DeviceNet_EN-C.pdf</a> <a href="#">OM_ITVx000_EN-C.pdf</a> <a href="#">OM_ITVx000-PROFIBUS-DP_EN-A.pdf</a> <a href="#">OM_ITVx000-52_53_EN-C.pdf</a> <a href="#">OM_ITVx000-RS-232C_EN.pdf</a>