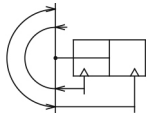


Rack & Pinion Style - MHW2 MHW2-20D

Datasheet

General series information

- Maximum gripping moment 8.27 Nm at 0.5 MPa
- Finger opening angle from -6° to 180°
- Double acting
- Repeatability: ±0.2 mm
- Max. operating frequency: 60 c.p.m.



Angular gripper, cam style

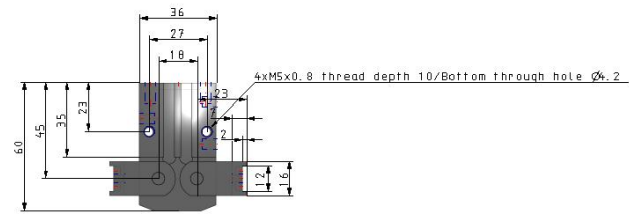
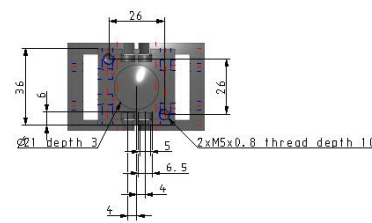
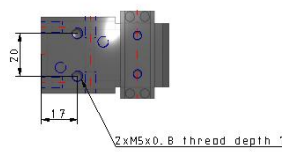
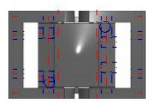
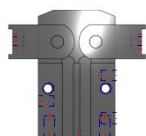
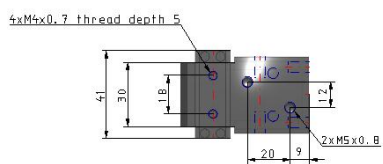
Standard specifications

Bore Size	20mm
Thread Type	Rc (or M Thread for 20 & 25 Bore)
Finger Option	Flat Finger Mounting Style (Standard)
Auto Switch	No Switch
Lead Wire or Prewired Connector	0.5m (Or None in the Case of No Switch)
Number	2 pcs. (Or None in the Case of No Switch)
Maximum operating pressure	0.7 MPa
Minimum operating pressure	0.15 MPa
Maximum ambient temperature	60 °C
Minimum ambient temperature	-10 °C
F124- Max-operating-frequency	60 c.p.m
Repeatability	± 0.2 mm
Applicable fluid	Air
Lubrication	Non lube
Effective holding force per finger (0.5 MPa)	0.3 N m
Action	Double acting
Opening / closing stroke (both sides), closing	-5°
Opening / closing stroke (both sides), opening	180°

Weight

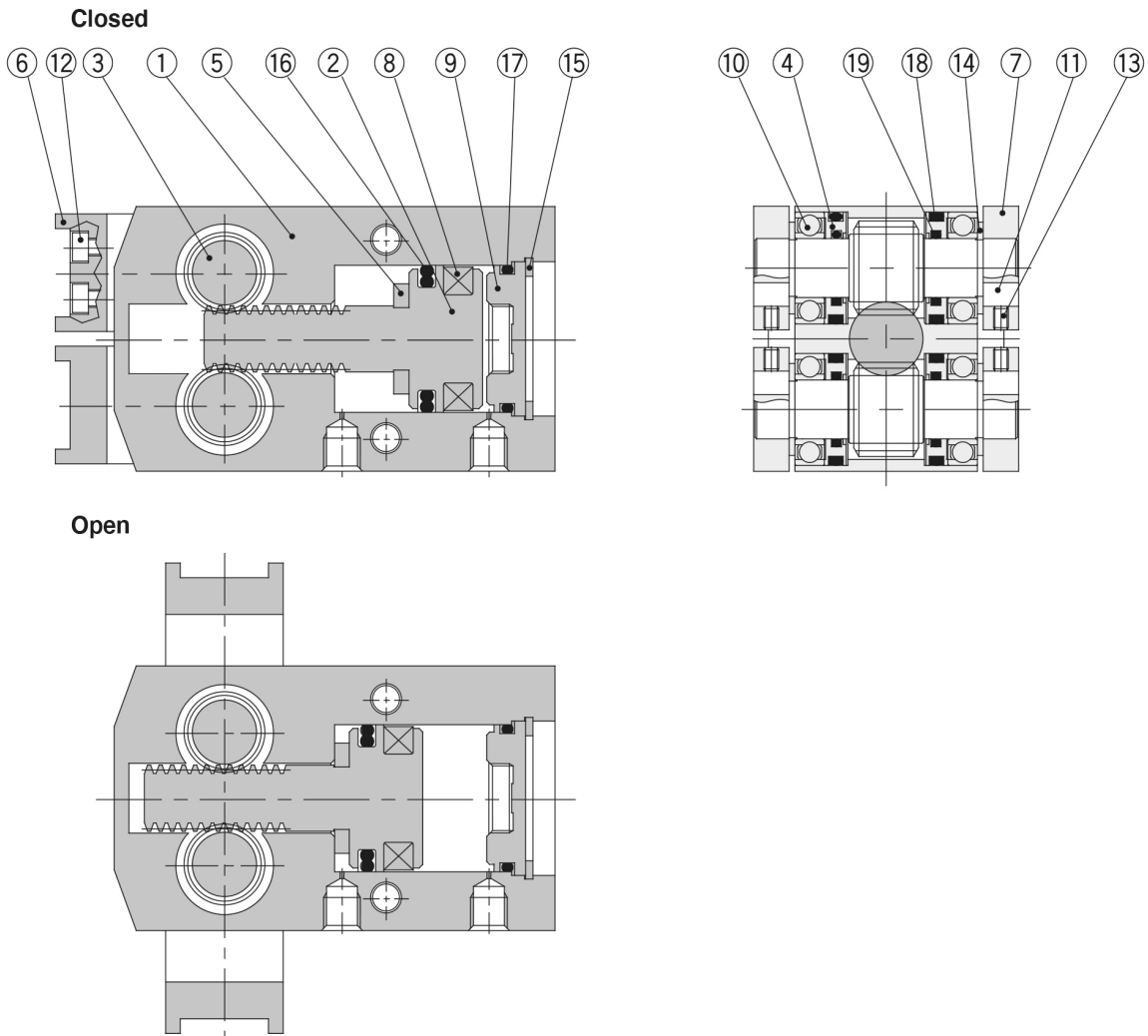
0.300 Kg

Dimensions



Specifications are subject to change without prior notice and any obligation on the part of the manufacturer.

Constructions



Component Parts

No.	Description	Material	Note
①	Body	Aluminum alloy	Hard anodized
②	Piston	Stainless steel	Nitriding
③	Pinion gear	Carbon steel	Heat treatment
④	Seal cover	Brass	
⑤	Bumper	Urethane rubber	
⑥	Finger (A)	Carbon steel	
⑦	Finger (B)	Carbon steel	
⑧	Rubber magnet	Synthetic rubber	

Component Parts

No.	Description	Material	Note
⑨	Cap	ø20, 25: Resin	
		ø32 to 50: Aluminum alloy	Hard anodized
⑩	Ball bearing	Carbon steel	Shield type
⑪	Key	Carbon steel	
⑫	Hexagon socket head screw	Carbon steel	
⑬	Hexagon socket cap screw	Carbon steel	
⑭	C-shape snap ring	Carbon steel	
⑮	C-shape snap ring	Carbon steel	

Additional information

Catalogue

[MHW2-A_EU.pdf](#)