

M(D)U Plate Cylinder, Double Acting, Single Rod w/Auto Switch Mounting Groove MDUB32-50DMZ

Datasheet

General series information

- Plate Cylinder, Double Acting, Single Rod.
- Reduced labour when mounting the switch.
- Auto-switch doesn't protrude.
- It's possible to mount the autoswitches in four directions.
- A maximum 62% width reduction.



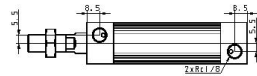
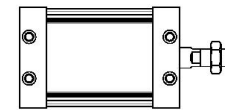
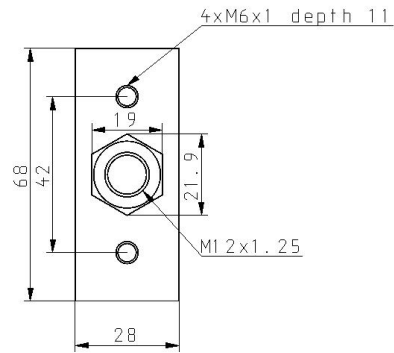
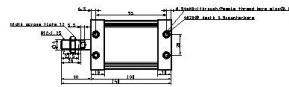
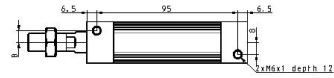
Double-acting, single-rod cylinder

Standard specifications

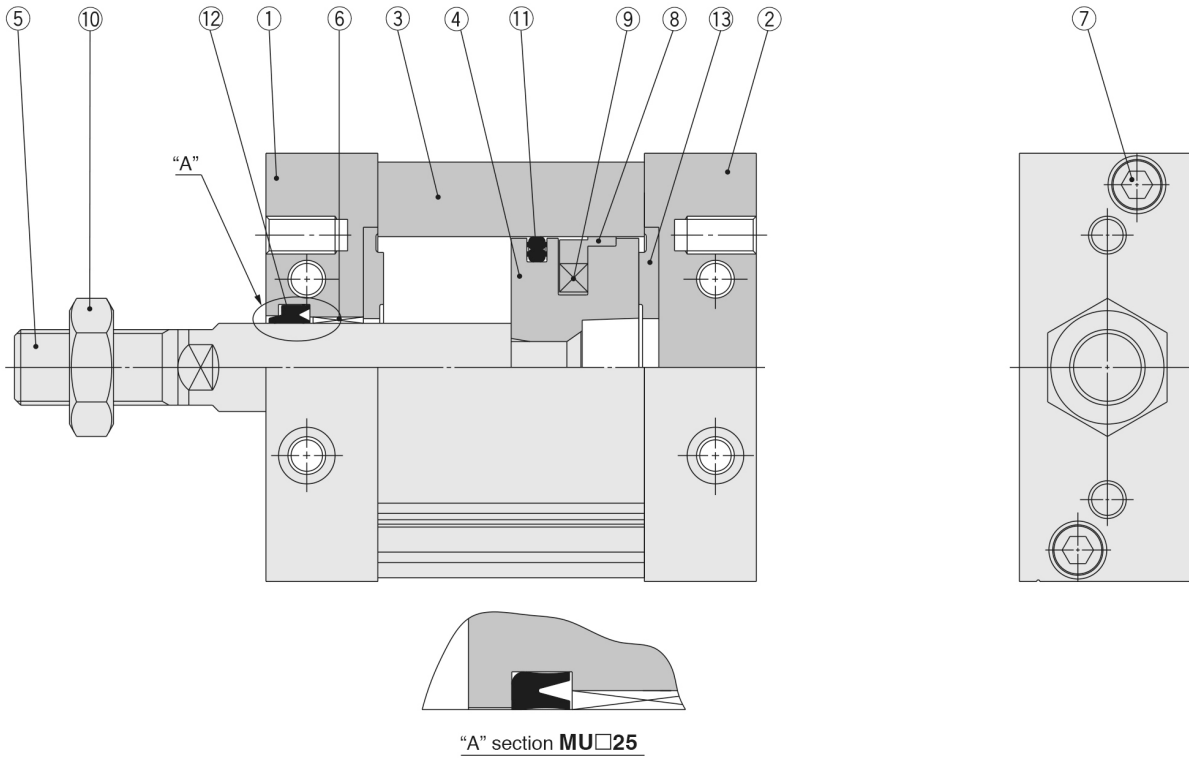
| | |
|---------------------------------------------------------|-------------------------------------------|
| Magnet | D (Built-in) |
| Mounting | B (Basic) |
| Size | 32 (Equiv. Ø32 Piston Area) |
| Port Thread Type | M thread: ø25, Rc: 32 to 63 |
| Stroke | 50 |
| Rod End | M (Male Thread) |
| Auto Switch | None |
| Lead Wire or Prewired Connector | 0.5m (Or None in the Case of No Switch) |
| Number | 2 pcs. (Or None in the Case of No Switch) |
| Maximum operating pressure | 0.7 MPa |
| Minimum operating pressure | 0.05 MPa |
| Proof pressure | 1.05 MPa |
| Mode of operation of drive | Double acting |
| Theoretical cylinder force, advance stroke (at 0.5 MPa) | 402 N |
| Theoretical cylinder force, return stroke (at 0.5 MPa) | 325 N |
| Maximum piston speed | 500 mm/s |
| Type of cushioning | Rubber Bumper |
| Minimum piston speed | 50 mm/s |

| | |
|---------------------------------------|-------------------------|
| Lubrication | Not required (non-lube) |
| Allowable rotational torque | 0.25 N·m |
| Maximum ambient and fluid temperature | 60 °C |
| Minimum ambient and fluid temperature | - 10 °C |
| Fluid | Air |
| Rod non-rotating accuracy | ±0.8° |
| Stroke length tolerance | +1.4 0 |
| Weight | 0.473 Kg |

Dimensions



Constructions



Component Parts

| No. | Description | Material | Note |
|-----|---------------------------------|--------------------------------|--------------------------------------|
| 1 | Rod cover | Aluminum alloy | Anodised |
| 2 | Head cover | Aluminum alloy | Anodised |
| 3 | Cylinder tube | Aluminum alloy | Hard anodised |
| 4 | Piston | Aluminum die-casted | Chromated |
| 5 | Piston rod | Carbon steel | Hard chrome plated |
| 6 | Bushing | Oil-impregnated sintered alloy | |
| 7 | Hexagon socket head bolt | Stainless steel | |
| 8 | Wear ring | Resin | |
| 9 | Magnet | — | Only built-in magnet type |
| 10 | Rod end nut | Rolled steel | Only attached to rod end male thread |
| 11 | Piston seal | NBR | |
| 12 | Rod seal | NBR | |
| 13 | Bumper | Urethane | |

Additional information

Catalogue

[MU_EU.pdf](#)