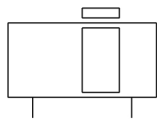


CY1S-Z, Magnetically Coupled Rodless Cylinder, Slide Bearing CY1SG15-250Z

Datasheet

Thanks to its lightweight body and reduced length, our updated Series CY1S-Z magnetically coupled rodless cylinder now delivers improved performance. Weighing 15% less and up to 15mm shorter than previous models, the new CY1S-Z is ideal for applications where relatively light loads need to be moved at low or medium speeds and where space is at a premium. The design offers increased flexibility with a wide range of bilateral and central piping and stroke adjustment options. Thanks to the adjustment bolt, the stroke ends position can be maintained without the need for adjusting the stroke which delivers improved accuracy and repeatability. The auto switch mounting moves forward as the switches can be located in any position and a switch mounting rail is fitted as standard. The Series is highly durable as lub-retainers are mounted on the internal and external surfaces of the cylinder tube to maintain lubrication.



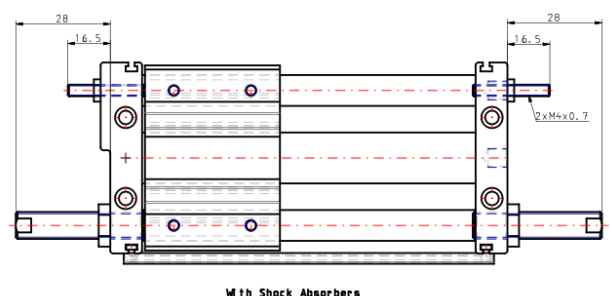
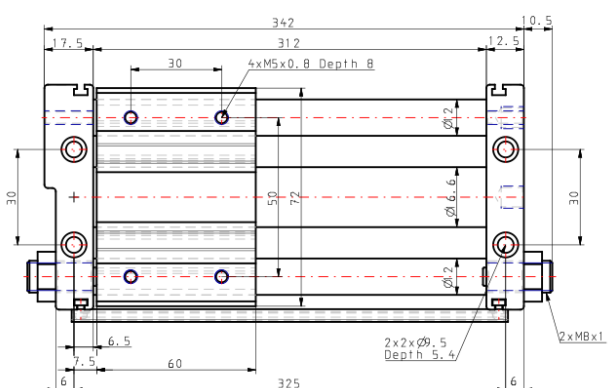
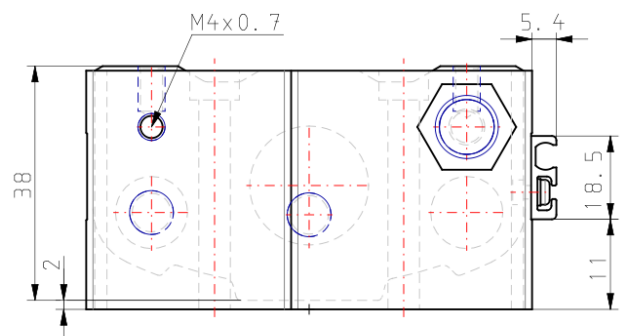
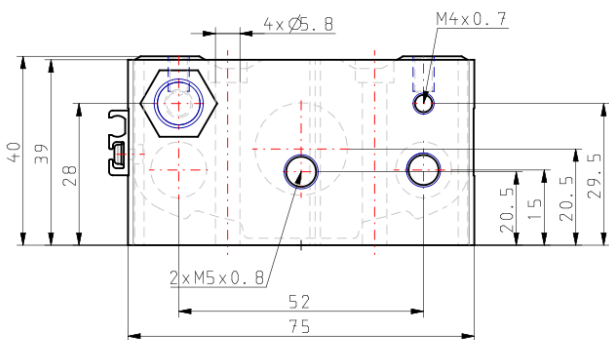
Magnetically coupled rodless cylinder

Standard specifications

Piping	G (Centralized Piping Type)
Bore Size	15 mm
Port Thread	M Thread: Bore 6-15
Rc	Bore 20-40
Stroke	250
Stopper Type	Bumper Bolt (Resin Tipped)
Auto Switch	No Switch
Lead Wire or Prewired Connector	0.5m
Number	2 pcs.
Pressure medium	Compressed air
Maximum temperature of pressure medium	60 °C
Maximum temperature of pressure medium with magnet	60 °C
Minimum temperature of pressure medium	-10 °C
Minimum temperature of pressure medium with magnet	-10 °C
Maximum operating pressure	0.7 MPa
Minimum operating pressure	0.18 MPa

Proof pressure	1.05 MPa
Maximum ambient temperature	60 °C
Minimum ambient temperature	-10 °C
Conform to the European RoHS Directive	Conform
Numero of pneumatic connections	2 pcs.
Pneumatic input connection	R 1/8
Mode of operation of drive	Double acting
Maximum piston speed	400 mm/s
Type of cushioning	Rubber Bumper
Maximum stroke reduction per side	6 mm
Max. Allowable Thrust	245 N
Max. operating frequency [cycle/min]	80 cycle/min
Max. Absorbed Energy	245 J
Weight	1.283 Kg

Dimensions



With Shock Absorbers

Additional information

Catalogue

[CY1-Z-A_EU.pdf](#)