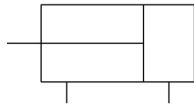


## C(D)QS, Compact Cylinder, Double Acting, Single Rod CDQSB12-10DM

Datasheet

### General series information

- Standard double acting single rod
- Bore sizes: 12, 16, 20, 25 (mm)
- Strokes from 5mm through 300mm depending upon bore size
- Mounts: through hole/both ends tapped, foot, front or rear flanges, double clevis
- Variety of switches and a variety of lead wire lengths



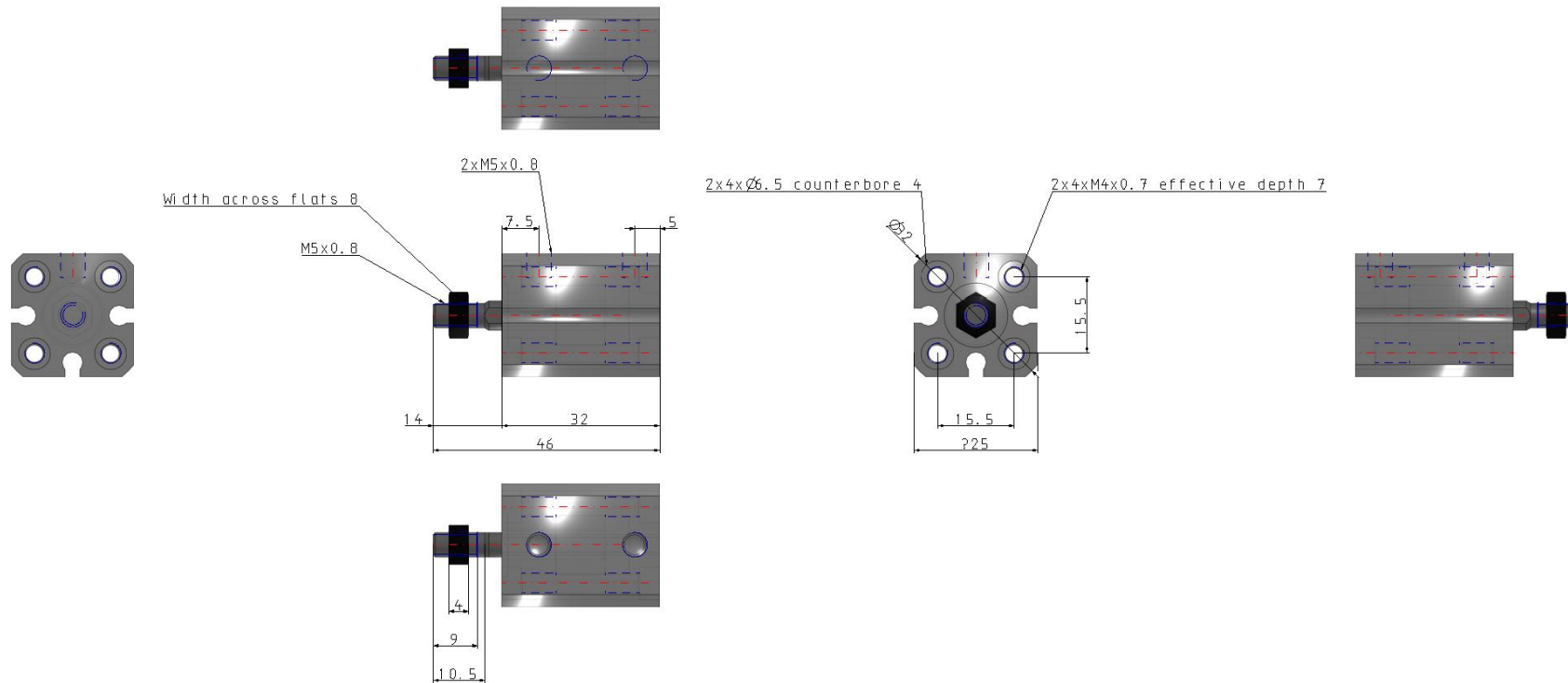
Double-acting, single-rod cylinder

### Standard specifications

|  |   |
|--|---|
| Magnet                                 | D (Built-in)                              |
| Mounting                               | B (Through Hole, Both Ends Tapped)        |
| Bore Size                              | Ø12 mm                                    |
| Lube-retainer                          | Without Stable Lubrication Function       |
| Stroke                                 | 10  |
| Option                                 | M (Rod End Male Thread)                   |
| Auto Switch                            | No Switch                                 |
| Lead Wire or Prewired Connector        | 0.5 m (Or None in the Case of No Switch)  |
| Number                                 | 2 pcs. (Or None in the Case of No Switch) |
| Rod End Options                        | None                                      |
| Pressure medium                        | Air                                       |
| Maximum temperature of pressure medium | 60 °C                                     |
| Minimum temperature of pressure medium | -10 °C                                    |
| Maximum operating pressure             | 1.0 MPa                                   |
| Minimum operating pressure             | 0.07 MPa                                  |
| Proof pressure                         | 1.5 MPa                                   |
| Maximum ambient temperature            | 60 °C                                     |
| Minimum ambient temperature            | -10 °C                                    |

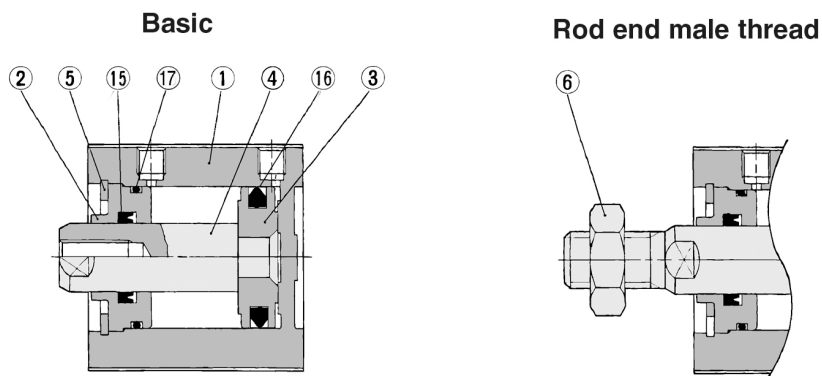
|   |                  |
|---|------------------|
| Number of pneumatic connections                         | 2 pcs.           |
| Pneumatic input connection                              | M5               |
| Mode of operation of drive                              | Double acting    |
| Theoretical cylinder force, advance stroke (at 0.5 MPa) | 57 N             |
| Theoretical cylinder force, return stroke (at 0.5 MPa)  | 42 N             |
| Maximum piston speed                                    | 500 mm/s         |
| Piston rod end  | Internal thread  |
| Geometric form of the piston rod                        | Round piston rod |
| Male thread of rod end                                  | M5               |
| Female thread of rod end                                | M3               |
| Minimum piston speed                                    | 50 mm/s          |
| Lubrication   | Non-lube         |
| Weight  | 0.050 Kg         |

# Dimensions



# Constructions

## Construction



### Component Parts

| No. | Description   | Material               | Note              |
|-----|---------------|------------------------|-------------------|
| ①   | Cylinder tube | Aluminum alloy         | Hard anodized     |
| ②   | Collar        | Aluminum bearing alloy | Anodized          |
| ③   | Piston        | Aluminum alloy         | Chromated         |
| ④   | Piston rod    | Stainless steel        |                   |
| ⑤   | Snap ring     | Carbon tool steel      | Phosphate coating |
| ⑥   | Rod end nut   | Carbon steel           | Nickel plated     |
| ⑮   | Rod seal      | NBR                    |                   |
| ⑯   | Piston seal   | NBR                    |                   |
| ⑰   | Tube gasket   | NBR                    |                   |

## Additional information

Catalogue

[CQS\\_EU.pdf](#)