

Advanced Sensors



For Accurate Effective Control

SMC Pressure & Flow sensors

ZSE/ISE Series - Pressure Switch



PSE Series - Pressure Sensors

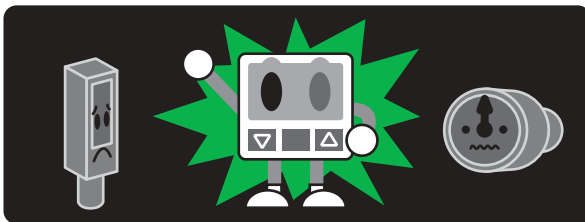


PF2 Series - Flow Sensors

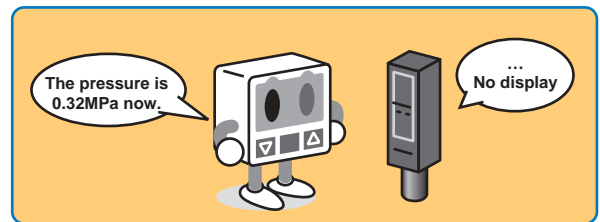


Why use Digital Pressure and Flow Sensors?

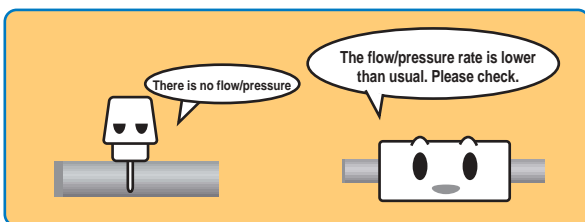
Digital Sensors have excellent visibility even in the darkest areas of a machine



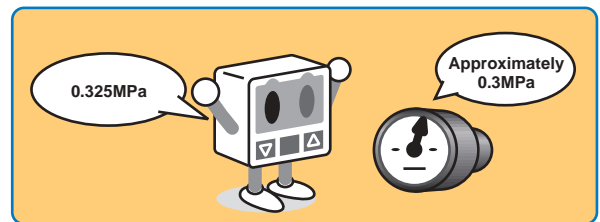
Digital Sensors clearly indicate the measured pressure and flow



Digital Sensors can often predict machine failures as they can detect abnormal operating conditions



Digital Sensors are highly accurate



SMC Digital Sensors/Switches monitor the status of your machine and help to reduce down time

High precision Digital Pressure

Individual sensor and controller type

Compact and light weight air pressure Sensors



Compact Pressure Sensor
PSE540 Series



Air pressure sensor
PSE530 Series



Low Differential Pressure Sensor
PSE550 Series



Controller

Bright, large, easy to read, 4 digit display



Multi-channel controller
PSE200 Series



Controller
PSE300 Series



General purpose pressure sensor for a wide variety of fluids



Pressure Sensor for General Fluid
PSE560 Series

For gen

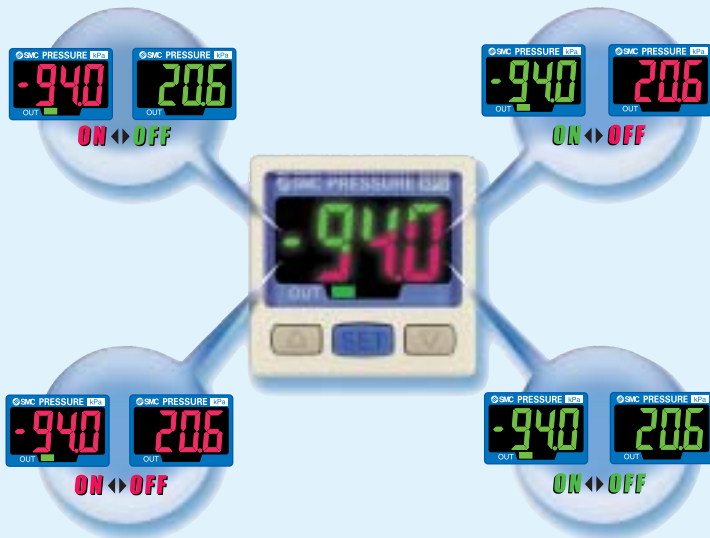
For gen

Sensors & Switches

Integrated sensor and controller type

2-colour display

- Choice of two digital colour display settings in red or green, to suit the application.
- 4 different display settings to suit the application.



For vacuum and low pressure
ZSE30 Series

For positive pressure
ISE30 Series

High precision digital pressure switch

- High precision and high resolution
For vacuum pressure: 1/1000 (0.1kPa)
For compound pressure: 1/2000 (0.1kPa)
For positive pressure: 1/1000 (0.001MPa)
- High enclosure rate: IP65

For vacuum and compound pressure
ZSE40 Series

For positive pressure
ISE40 Series



Air catch Sensor

ISA2 Series

- Stable detection of 0.01 to 0.5mm clearance
- Plug connectors (Centralised wiring).
- Modular construction, (Requires less man hours to wire).
- Repetition accuracy 0.01mm or less.
- Minimum operating pressure 30kPa (ISA2-G).



2-Colour Display Type

ISE70/75/75H Series

- Metal body type (Die-cast aluminum).
- For Air: ISE70 (1MPa).
- For general fluids: ISE75 (10MPa); ISE75H (15MPa).
- 2-Colour display (green and red).
- IP67 enclosure, with M12 connector.
- Port size: G1/4 (ISO1179-1).



General air

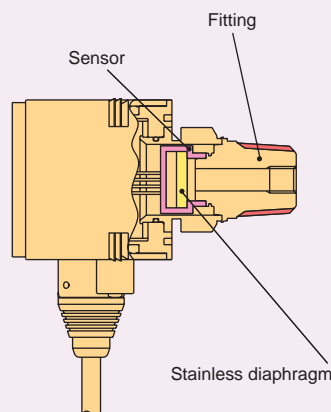
General fluid



Compatible with various fluids.

- Hydraulic oil
- Silicon oil
- Lubricating oil
- Carbon dioxide
- Argon
- Wet air
- Ammonia
- Freon
- Fluoro carbon
- Nitrogen

High precision and high resolution digital pressure switch



Thread-in piping type

For compound pressure
ZSE50F Series

SUS630
Material in contact with the fluid
SUS304
Fitting

Sensor and fitting welded by electron beam welding

For positive pressure
ISE50 Series

Special fitting type VCR® or Swagelock®

For compound pressure
ZSE60F Series

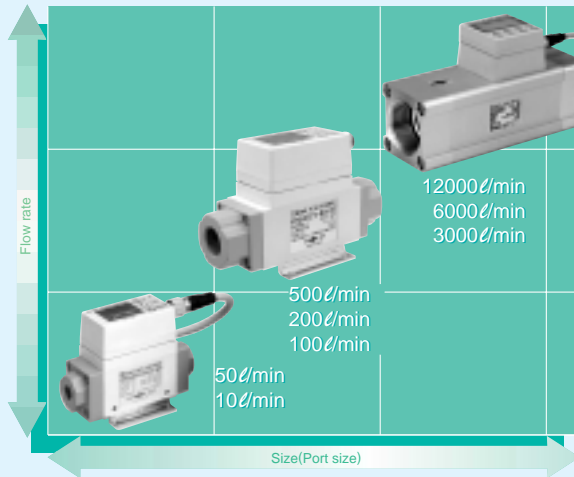
Special fitting for semiconductor industry (with metal gasket)
Leakage: 1×10^{-10} Pa.m³/s

For positive pressure
ISE60 Series

High Precision Digital Flow

Digital Flow Sensors and Switches for general Air

Integrated Display Type Flow rate: 10 to 12.006 l/min



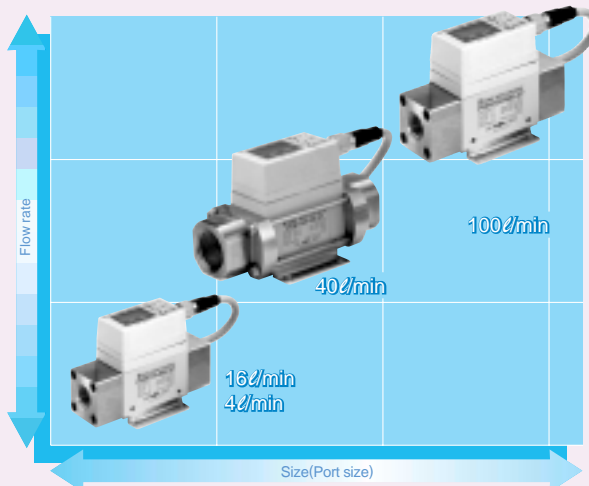
- Flow rate setting and monitoring are possible with the digital display
- Three types of output: Switch, accumulated pulse, and analogue outputs
- Switching from real-time flow rate to accumulated flow is possible
- Water resistant construction conforming to IP65

For gen

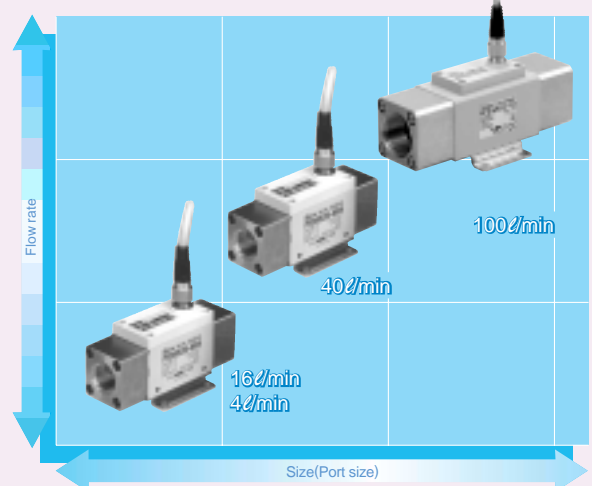
Digital Flow Sensors and Switches for general Water

For general water

Integrated Display Type Flow rate: 4 to 100 l/min



Sensor type Flow rate: 4 to 100 l/min



Display unit

4 channel

PF2W3□□

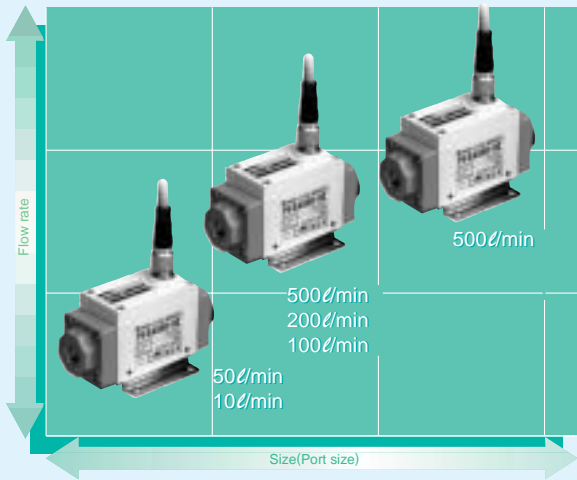


PF2W20□



Sensors & Switches

Sensor Type Flow rate 10 to 500 ℓ /min



- Remote monitoring of the flow rate
- Three types of output:
Switch, accumulated pulse, and analogue outputs
- Switching from real-time flow rate to accumulated flow is possible
- Water resistant construction conforming to IP65

Display unit
PF2A3□ Series



Display unit 4 channel
PF2A20□

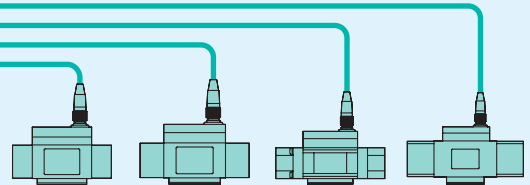


A single controller can monitor the flow rate of 4 different sensors.

4 independent flow rate ranges can be monitored by a single controller.



4-channel Flow Monitor
Series PF2□200



eral air

For deionized
water & chemicals

Digital Flow Sensors & Switches for Deionized Water & Chemicals

Flow rate: 4 to 40 ℓ /min



- Remote monitoring of the flow rate
- Swept flow characteristics
- Particle generation of 3 particles/cc or less

Display unit



PF2D30□ Series

Display unit 4 channel



PF2D20□ Series

Sensors, Switches



Adjustable Vacuum and Pressure Switch with Display

Series ZSE30/ISE30

- 2 styles:
ZSE30: vacuum and pressure.
ISE30: pressure.
- Enclosure IP40.
- Large, easy-to-read display.
- 2 colour (green/red) display.
- Analogue output: 4 - 20 mA or 1 - 5 V.
- With straight and elbow one-touch fittings.

Part number	Switch point	Connection port	Switch output	Voltage
ISE30-01-25-L	Pressure: 0~1.0MPa	male: R 1/8 female: M5 (also available with Ø 4 or 6 mm push-in fitting)	NPN	12~24 V DC
ISE30-01-65-L			PNP	
ISE30-01-26-L			1 - 5 V	
ISE30-01-28-L			4 -20 mA	
ZSE30-01-25-L	Vacuum + Pressure -100 ~ +100 KPa		NPN	
ZSE30-01-65-L			PNP	
ZSE30-01-26-L			1 - 5 V	
ZSE30-01-28-L			4 -20 mA	



Accessories

Connection cable with plug connector	ZS-27-A
Mounting bracket	ZS-27-B
Bracket for panel mounting	ZS-27-C

Adjustable Pressure and Vacuum Switch with Display

Series ZSE40•ISE40
(Vacuum) (Pressure)

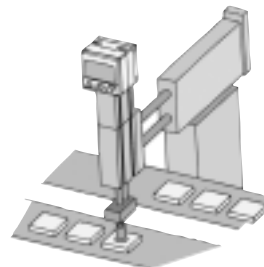
- 3 styles:
ZSE40: vacuum
ISE40: pressure
ZSE40F: vacuum & pressure combination.
- Wide range of programs and accessories.
- Large, easy-to-read display.
- IP65 enclosure.
- Simple, menu-driven adjustment.
- Output's: analogue & 2x NPN or PNP.
- Repeatability ± 2% F.S.
- Response time 2.5 ms. max.

Part number*	Switch point	Connection port	Switch output	Voltage
ISE40-01-22	Pressure: 0.1~1.0MPa	R1/8» (ø4, 6 on request)	1 - 5 V analogue + 2 x NPN	12~24 V DC
ISE40-01-22L			1 - 5 V analogue + 2 x PNP	
ISE40-01-62			1 - 5 V analogue + 2 x NPN	
ISE40-01-62L	1 - 5 V analogue + 2 x PNP			
ZSE40F-01-22	Vacuum & Pressure: -101.3 ~ +100.0 KPa		1 - 5 V analogue + 2 x NPN	
ZSE40F-01-22L			1 - 5 V analogue + 2 x PNP	
ZSE40F-01-62		1 - 5 V analogue + 2 x NPN		
ZSE40F-01-62L				

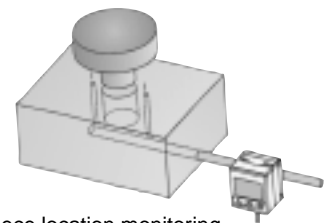
* ZSE40* for vacuum on request

Mounting accessories

High foot	Short foot	Panel adapter	Panel adapter with cover
ZS-24-A	ZS-24-B	ZS-22-B	ZS-24-C



ZSE40F
Vacuum application



ISE40
Work piece location monitoring

Pressure and Vacuum Switch for Fluids, adjustable with LCD Display

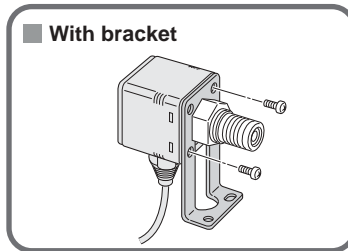
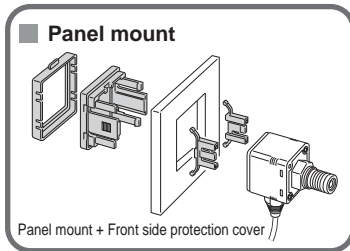
Series ZSE50•ISE50•ZSE60•ISE60

- ZSE**F-Series for -100kPa ~+100 kPa
ISE**-Series for 0~1.0 MPa.
- Both series are for use with special fluids, e.g. hydraulic oils, CO₂, argon, freon, etc.
- Stainless steel design in SUS630 and SUS504.
- Switch points and technical details are the same as ZSE40/ISE40.
- ZSE60/ISE60 are optionally available with VCR® or SWAGELOK® - compatible connections.

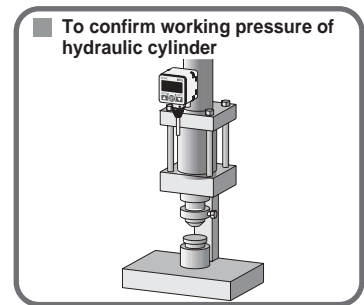
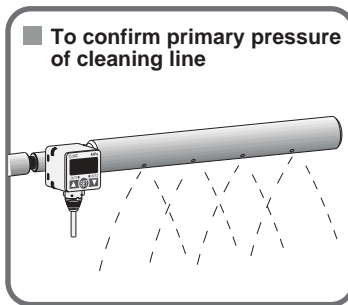
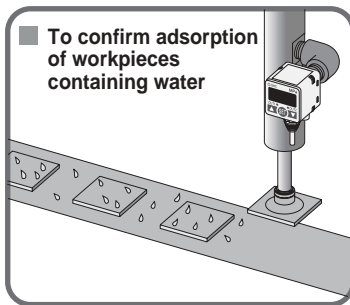


Enclosure IP65

Option



Application examples



2-Colour Display Type Digital Pressure Switch Metal Body Type

Series ISE70/75/75H
(For Air) (For Fluids)

- Metal Body Type (Die-cast aluminum).
- For general fluids: ISE75 (10MPa); ISE75H (15MPa).
- For Air: ISE70 (1MPa)
- 2-colour display (green and red).
- IP67 enclosure, with M12 connector.
- Port Size: G1/4 (ISO1179-1).

Part number*	Switch point	Switch output	Voltage
ISE70-F02-43	For Air -0.1~1MPa	Fixed setting; NPN open collector 1 output (Pin no. 4) + PNP open collector 1 output (Pin no. 2)	12~24 V DC
ISE70-F02-65		PNP open collector 1 output (Pin no. 4)	
ISE75-F02-43	For General Fluids 0.4~10MPa	Fixed setting; NPN open collector 1 output (Pin no. 4) + PNP open collector 1 output (Pin no. 2)	
ISE75-F02-65		PNP open collector 1 output (Pin no. 4)	
ISE75H-F02-43	For General Fluids 0.5~15MPa	Fixed setting; NPN open collector 1 output (Pin no. 4) + PNP open collector 1 output (Pin no. 2)	
ISE75H-F02-65		PNP open collector 1 output (Pin no. 4)	

Mounting accessories

Bracket	ZS-31-A
Lead wire with M12 connector, straight	ZS-31-B
Lead wire with M12 connector, right-angled	ZS-31-C



For Air	For General Fluids	
ISE70 (1MPa)	ISE75 (10MPa)	ISE75H (15MPa)
<p>Plain</p>	<p>Grey</p>	<p>Orange</p>

Vacuum and Pressure Sensor with Controller Unit

Series PSE530/200/300

• Sensor and controller separate.

PSE530:

- Either IP65 or IP40.
- Simple electr. connection using plug.
- Minimal response times.

PSE200:

- Controller for 4 sensor inputs.
- Autom. sensor recognition.
- Auto shift function.

PSE300.

- 1 ms response time.
- 2 colour display determined by switching status.
- 2 switch outputs and analogue output.



Measuring sensor for compressed air

Part number	Connection thread	Pressure range	Output signal
PSE530-M5	M5	0~1MPa	Analogue 1 ~ 5 V
PSE531-M5		0 ~ -101 KPa	
PSE532-M5		0 ~ 101 KPa	
PSE533-M5		-101 ~ 101 KPa	

Accessories

Sensor cable with plug	ZS-26-G
------------------------	----------------

Controller Unit for 4 sensors

Part number	Switch output	Mounting	Response time	Note
PSE201-4C	PNP 80 mA	Panel mounting	50 ms	With 4 sensor connectors

Accessories

Protective cover for PSE201	ZS-26-01
Panel mounting adapter for PSE201	ZS-26-B
Plug set (4 pieces)	ZS-26-E

Controller Unit for 1 sensor

Part number.	Switch output	Response time	Mounting	Note
PSE303-LC	2 x PNP + analogue 1-5V	1ms	Panel mounting	incl. supply cable, sensor plug

Accessories

Bracket PSE300	ZS-28-B
Panel mount adapter PSE300	ZS-27-C
Panel mount adapter F protective front cover PSE300	ZS-27-D

Micro Vacuum and Pressure Sensor with Controller Unit

Series PSE540

PSE540

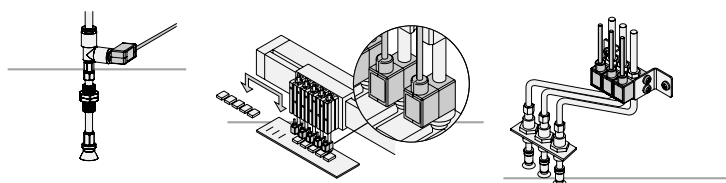
- Micro design, e.g. 9.6 x 20.8 x 18 mm.
- Minimal weight, e.g. 3.2 g.
- 7 different connection types



Compressed Air Micro Sensor

Part number	Connection type	Pressure range	Output signal
PSE543-M3	M3 male	Pressure and Vacuum: -100 ~ +100 KPa	Analogue 1 ~ 5 V
PSE543-M5	M5 male		
PSE543-01	male R1/8 , female M5		
PSE543-R04	Ø 4 mm one-touch fitting		
PSE543-R06	Ø 6 mm one-touch fitting		
PSE543-IM5	M5 female thread		
PSE543-IM5H	M5 female, with mounting holes		

Controller Unit, please refer to above PSE200/300



Pressure Sensor for General Purpose Fluids Series PSE560

PSE560

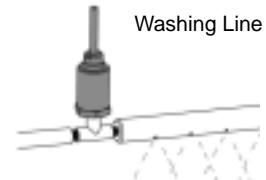
- IP65.
- Wetted material SUS316L.
- Copper-free.
- Oil-free (single diaphragm).



Compressed Air Micro Sensor

Part number	Output signal	Pressure range
PSE560- [ⓧ]	Voltage output type 1 to 5 V	Positive pressure (0 to 1 MPa)
PSE560- [ⓧ] -28	Current output type 4 to 20mA	Positive pressure (0 to 1 MPa)
PSE561- [ⓧ]	Voltage output type 1 to 5 V	Vacuum (0 to -101 kPa)
PSE561- [ⓧ] -28	Current output type 4 to 20mA	Vacuum (0 to -101 kPa)
PSE563- [ⓧ]	Voltage output type 1 to 5 V	Compound pressure (-100 to 100 kPa)
PSE563- [ⓧ] -28	Current output type 4 to 20mA	Compound pressure (-100 to 100 kPa)
PSE564- [ⓧ]	Voltage output type 1 to 5 V	Positive pressure (0 to 500 kPa)
PSE564- [ⓧ] -28	Current output type 4 to 20mA	Positive pressure (0 to 500 kPa)

[ⓧ] : 01 = R 1/8 (with M5 female thread)
 02 = R 1/4 (with M5 female thread)
 C01 = Rc 1/8
 N01 = NPT 1/8 (with M5 female thread)
 N02 = NPT 1/4 (with M5 female thread)
 A2 = URJ 1/4
 B2 = TSJ 1/4



PSE200:

- Controller for 4 sensor inputs.
- Autom. sensor recognition.
- Auto shift function.

PSE300.

- 1 ms response time.
- 2 colour display determined by switching status.
- 2 switch outputs and analogue output.

Controller Unit for 4 sensors

Part number	Switch output	Mounting	Response time	Note
PSE201-4C	PNP 80 mA	Panel mounting	50 ms	With 4 sensor connectors

Accessories

Protective cover for PSE201	ZS-26-01
Panel mounting adapter for PSE201	ZS-26-B
Plug set (4 pieces)	ZS-26-E

Controller Unit

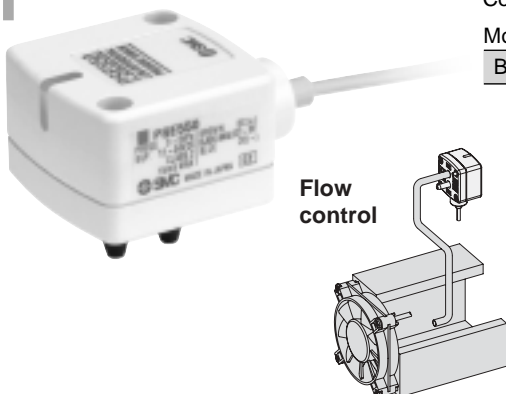
Part number.	Switch output	Response time	Note
PSE303-LC	2 x PNP + analog	1ms	incl. supply cable, sensor plug

Accessories

Bracket PSE300	ZS-28-B
Panel mount adapter PSE300	ZS-27-C
Panel mount adapter F protective front cover PSE300	ZS-27-D

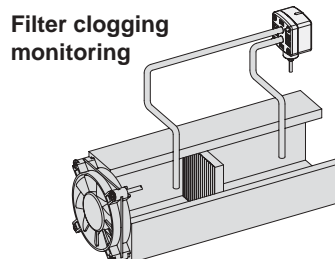
Low Differential Pressure Sensor Series PSE550

- Rated differential pressure range: 0 to 2kPa.
- Accuracy: ±1% F.S.
- Proof pressure: 65kPa.
- Output: 1 to 5VDC.
- Analog output: 4 to 20mA DC.

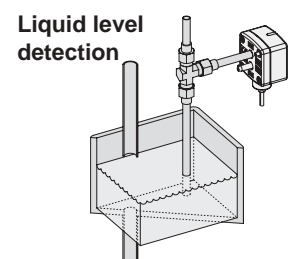


Can control air flow by monitoring the flow rate inside the duct.

Mounting accessories	
Bracket	ZS-30-A



Can control filtration and replacement periods by monitoring the clogging of the filter.



Can detect the liquid level through changes in the purge pressure.

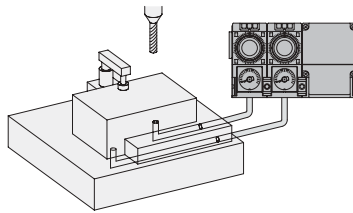
Air Catch Sensor

Series ISA2

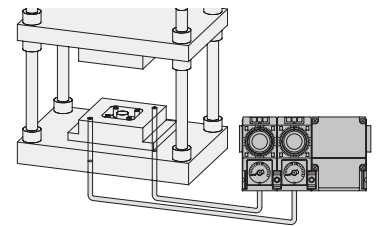
- Stable detection of 0.01 to 0.5mm clearance.
- Plug connectors (Centralised wiring).
- Modular construction, (Requires less man hours to wire).
- Repetition accuracy 0.01mm or less.
- Minimum operating pressure 30 kPa (ISA2-G).



To check the work piece position on the reference plane



Position check of metal mold



Digital Flow Switch

Series PF2A/PF2W

- Either for air or water.
- Simple, LED display readout.
- Either integrated or remote combination of sensor and display.
- Key pad for simple adjustments.
- 2 independent outputs/switch points.
- No mechanically moving parts, so longer service life.



Digital flow switch for air or water, integrated display type

Fluid	Part number	Flow rate l/min	Min. set unit l/min	Switch outputs*	Supply voltage	Operating pressure range MPa
Dry air, N ₂	PF2A710-F01-67N	1 ~ 10	1% R.D. of max. flow	2 x PNP 80 mA	12 - 24 VDC	0 ~ 0.5
	PF2A710-F02-67N	1 ~ 10				
	PF2A750-F01-67N	5 ~ 50				
	PF2A750-F02-67N	5 ~ 50				
	PF2A711-F03-67N	10 ~ 100				
	PF2A721-F03-67N	20 ~ 200				
Air	PF2A751-F04-67N	50 ~ 500	5	2 x PNP 80 mA	24VDC	0.1 ~ 1.5
	PF2A703H-F10-68N	150 ~ 3000	10			
	PF2A706H-F14-68N	300 ~ 6000	600 ~ 12000			
Water	PF2A712H-F20-68N	600 ~ 12000	0,5 ~ 4	2 x PNP 80 mA	12 - 24 VDC	0 ~ 1.0
	PF2W704-F03-67N	2 ~ 16	0,1			
	PF2W720-F03-67N	2 ~ 16	0,1			
	PF2W720-F04-67N	2 ~ 16	0,1			
	PF2W740-F04-67N	5 ~ 40	0,5			
	PF2W740-F06-67N	5 ~ 40	0,5			
	PF2W711-F06-67N	10 ~ 100	1,0			

NPN on request

Digital flow switch for air or water, remote type sensor unit

Fluid	Part number	Flow rate l/min	Type	Switch outputs*	Supply voltage	Operating pressure range MPa
Dry air, N ₂	PF2A510-F01N	1 ~ 10	Measuring sensor	2 x PNP, 80 mA	12 - 24 VDC	0 ~ 0.5
	PF2A510-F02N	1 ~ 10				
	PF2A550-F01N	5 ~ 50				
	PF2A550-F02N	5 ~ 50				
	PF2A511-F03N	10 ~ 100				
	PF2A521-F03N	20 ~ 200				
	PF2A551-F04N	50 ~ 500				
	PF2A301-B	1 ~ 50	Display	2 x PNP	12 - 24 VDC	
	PF2A311-B	10 ~ 500				
	PF2A313-B	10 ~ 500				
Water	PF2W504-F03N	0.5 ~ 4	Measuring sensor			0 ~ 1.0
	PF2W520-F03N	2 ~ 16				
	PF2W520-F04N	2 ~ 16				
	PF2W540-F04N	5 ~ 40				
	PF2W540-F06N	5 ~ 40				
	PF2W511-F06N	10 ~ 100	Display	2 x PNP 80 mA	12 - 24 VDC	
	PF2W511-F10N	10 ~ 100				
	PF2W311-B	0.5 ~ 4				
	PF2W301-B	2 ~ 16				
	PF2W321-B	5 ~ 40				
	PF2W331-B	10 ~ 100				

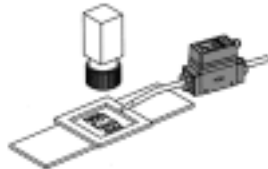
NPN on request

Accessory Cable/plug with ferrite core

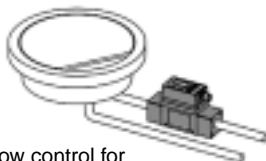
Straight	P398010-12
Elbow	P398010-13

Application examples

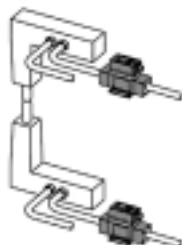
Monitoring an N₂ flow



Temperature control



Waterflow control for cooling welding guns



Digital Flow Switch for Deionised Water & Chemicals

Series PF2D

- Dust generation of 3 particles/cc or less (average number).
- Karman vortex eliminates moving parts and allows low dust generation.
- Swept flow characteristics
Tapered side seal minimizes dead volume to reduce accumulation of liquid pool.



Body and Sensor

New PFA

Tube

Super PFA

Three types of flow range

- 0.4 to 4 l/min (PF2D504)
- 1.8 to 20 l/min (PF2D520)
- 4.0 to 40 l/min (PF2D540)

A single controller can monitor the flow rate of 4 different sensors.



4-channel Flow Monitor
Series PF2D200

1 sensor Display unit





EUROPEAN SUBSIDIARIES:



Austria

SMC Pneumatik GmbH (Austria).
Girakstrasse 8, A-2100 Korneuburg
Phone: +43 2262-62280, Fax: +43 2262-62285
E-mail: office@smc.at
http://www.smc.at



France

SMC Pneumatique, S.A.
1, Boulevard de Strasbourg, Parc Gustave Eiffel
Bussy Saint Georges F-77607 Mame La Vallée Cedex 3
Phone: +33 (0)1-6476 1000, Fax: +33 (0)1-6476 1010
E-mail: contact@smc-france.fr
http://www.smc-france.fr



Netherlands

SMC Pneumatics BV
De Ruyterkade 120, NL-1011 AB Amsterdam
Phone: +31 (0)20-5318888, Fax: +31 (0)20-5318880
E-mail: info@smcpneumatics.nl
http://www.smcpneumatics.nl



Spain

SMC España, S.A.
Zuazobidea 14, 01015 Vitoria
Phone: +34 945-184 100, Fax: +34 945-184 124
E-mail: post@smc.smces.es
http://www.smces.es



Belgium

SMC Pneumatics N.V./S.A.
Nijverheidsstraat 20, B-2160 Wommelgem
Phone: +32 (0)3-355-1464, Fax: +32 (0)3-355-1466
E-mail: post@smcpneumatics.be
http://www.smcpneumatics.be



Germany

SMC Pneumatik GmbH
Boschring 13-15, D-63329 Egelsbach
Phone: +49 (0)6103-4020, Fax: +49 (0)6103-402139
E-mail: info@smc-pneumatik.de
http://www.smc-pneumatik.de



Norway

SMC Pneumatics Norway A/S
Vollsveien 13 C, Granfos Næringspark N-1366 Lysaker
Tel: +47 67 12 90 20, Fax: +47 67 12 90 21
E-mail: post@smc-norge.no
http://www.smc-norge.no



Sweden

SMC Pneumatics Sweden AB
Ekhagsvägen 29-31, S-141 71 Huddinge
Phone: +46 (0)8-603 12 00, Fax: +46 (0)8-603 12 90
E-mail: post@smcpneumatics.se
http://www.smc.nu



Bulgaria

SMC Industrial Automation Bulgaria EOOD
16 Kliment Ohridski Blvd., fl.13 BG-1756 Sofia
Phone: +359 2 9744492, Fax: +359 2 9744519
E-mail: office@smc.bg
http://www.smc.bg



Greece

S. Parianopoulos S.A.
7, Konstantinoupoleos Street, GR-11855 Athens
Phone: +30 (0)1-3426076, Fax: +30 (0)1-3455578
E-mail: parianos@hol.gr
http://www.smceu.com



Poland

SMC Industrial Automation Polska Sp.z.o.o.
ul. Konstruktorska 11A, PL-02-673 Warszawa,
Phone: +48 22 548 5085, Fax: +48 22 548 5087
E-mail: office@smc.pl
http://www.smc.pl



Switzerland

SMC Pneumatik AG
Dorfstrasse 7, CH-8484 Weisslingen
Phone: +41 (0)52-396-3131, Fax: +41 (0)52-396-3191
E-mail: info@smc.ch
http://www.smc.ch



Croatia

SMC Industrijska automatika d.o.o.
Cromerec 12, 10000 ZAGREB
Phone: +385 1 377 66 74, Fax: +385 1 377 66 74
E-mail: office@smc.hr
http://www.smceu.com



Hungary

SMC Hungary Ipari Automatizálási Kft.
Budafoki út 107-113, H-11117 Budapest
Phone: +36 1 371 1343, Fax: +36 1 371 1344
E-mail: office@smc-automation.hu
http://www.smc-automation.hu



Portugal

SMC Sucursal Portugal, S.A.
Rua de Engº Ferreira Dias 452, 4100-246 Porto
Phone: +351 22-610-89-22, Fax: +351 22-610-89-36
E-mail: postpt@smc.smces.es
http://www.smces.es



Turkey

Entek Prömatik San. ve Tic Ltd. Sti.
Peipa Tic. Merkezi Kat: 11 No: 1625, TR-80270 Okmeydanı Istanbul
Phone: +90 (0)212-221-1512, Fax: +90 (0)212-221-1519
E-mail: smc-entek@entek.com.tr
http://www.entek.com.tr



Czech Republic

SMC Industrial Automation CZ s.r.o.
Hudcova 78a, CZ-61200 Brno
Phone: +420 5 414 24611, Fax: +420 5 412 18034
E-mail: office@smc.cz
http://www.smc.cz



Ireland

SMC Pneumatics (Ireland) Ltd.
2002 Citywest Business Campus, Naas Road, Saggart, Co. Dublin
Phone: +353 (0)1-403 9000, Fax: +353 (0)1-464-0500
E-mail: sales@smcpneumatics.ie
http://www.smcpneumatics.ie



Romania

SMC Romania srl
Str Frunzei 29, Sector 2, Bucharest
Phone: +40 213205111, Fax: +40 213261489
E-mail: smcromania@smcromania.ro
http://www.smcromania.ro



UK

SMC Pneumatics (UK) Ltd
Vincent Avenue, Crownhill, Milton Keynes, MK8 0AN
Phone: +44 (0)800 1382930 Fax: +44 (0)1908-555064
E-mail: sales@smcpneumatics.co.uk
http://www.smcpneumatics.co.uk



Denmark

SMC Pneumatik A/S
Knudsminde 4B, DK-8300 Odder
Phone: +45 70252900, Fax: +45 70252901
E-mail: smc@smc-pneumatik.dk
http://www.smc-pneumatik.com



Italy

SMC Italia S.p.A
Via Garibaldi 62, I-20061 Carugate, (Milano)
Phone: +39 (0)2-92711, Fax: +39 (0)2-9271365
E-mail: mailbox@smcitalia.it
http://www.smcitalia.it



Russia

SMC Pneumatik LLC.
Sredny pr. 36/40, St. Petersburg 199004
Phone: +812 118 5445, Fax: +812 118 5449
E-mail: marketing@smc-pneumatik.ru
http://www.smc-pneumatik.ru



Estonia

SMC Pneumatics Estonia OÜ
Laki 12-101, 106 21 Tallinn
Phone: +372 (0)6 593540, Fax: +372 (0)6 593541
E-mail: smc@smcpneumatics.ee
http://www.smcpneumatics.ee



Latvia

SMC Pneumatics Latvia SIA
Smerla 1-705, Riga LV-1006, Latvia
Phone: +371 781-77-00, Fax: +371 781-77-01
E-mail: info@smclv.lv
http://www.smclv.lv



Slovakia

SMC Priemyselna Automatizácia, s.r.o.
Námestie Martina Benku 10, SK-81107 Bratislava
Phone: +421 2 444 56725, Fax: +421 2 444 56028
E-mail: office@smc.sk
http://www.smc.sk



Finland

SMC Pneumatics Finland OY
PL72, Tiistintuntintie 4, SF-02031 ESPOO
Phone: +358 207 513513, Fax: +358 207 513595
E-mail: smcfi@smc.fi http://www.smc.fi



Lithuania

SMC Pneumatics Lietuva, UAB
Savanoriu pr. 180, LT-01354 Vilnius, Lithuania
Phone: +370 5 264 81 26, Fax: +370 5 264 81 26



Slovenia

SMC industrijska Avtomatika d.o.o.
Grajski trg 15, SLO-8360 Zuzemberk
Phone: +386 738 85240 Fax: +386 738 85249
E-mail: office@smc-ind-avtom.si
http://www.smc-ind-avtom.si



OTHER SUBSIDIARIES WORLDWIDE:

ARGENTINA, AUSTRALIA, BOLIVIA, BRASIL, CANADA, CHILE,
CHINA, HONG KONG, INDIA, INDONESIA, MALAYSIA, MEXICO,
NEW ZEALAND, PHILIPPINES, SINGAPORE, SOUTH KOREA,
TAIWAN, THAILAND, USA, VENEZUELA

<http://www.smceu.com>
<http://www.smcworld.com>