

CP96S(D) ø125, ISO Cylinder, Double Acting with End of Stroke Cushioning CP96SDB125-150

Datasheet

General series information

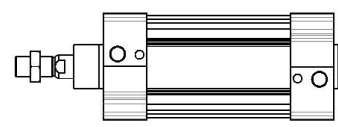
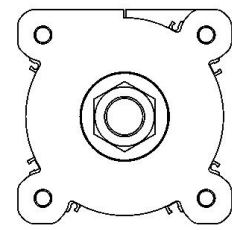
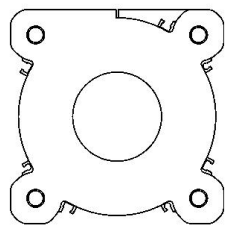
- Double acting, standard type, single or double rod
- Bore sizes (mm): 125
- Maximum stroke 2000mm
- Auto switch capable

Standard specifications

| | |
|--|---|
| Magnet | D (Built-in) |
| Mounting | B (Basic, w/o Bracket) |
| Bore Size | Ø125 |
| Stroke | 150 |
| Rod Boot | None |
| Rod | Single Rod |
| Auto Switch | No Switch |
| Lead Wire or Prewired Connector | 0.5m [Or None in the Case of No Switch] |
| Number | 2 pcs. [Or None in the Case of No Switch] |
| Rod End Options | None |
| Temperature Resistance | None |
| Tie Rod | None |
| Fluororubber Seal | None |
| Made of Stainless Steel (-XC68) | None |
| Pressure medium | Compressed Air |
| Maximum temperature of pressure medium | 70 °C |
| Maximum temperature of pressure medium with magnet | 60 °C |
| Minimum temperature of pressure medium | -20 °C [without condensation] |
| Minimum temperature of pressure medium with magnet | -10 °C [without condensation] |

| | |
|---|-------------------------|
| Maximum operating pressure | 1.0 MPa |
| Minimum operating pressure | 0.05 MPa |
| Proof pressure | 1.5 MPa |
| Maximum ambient temperature | 70 °C |
| Maximum ambient temperature with magnet | 60 °C |
| Minimum ambient temperature | -20 °C |
| Minimum ambient temperature with magnet | -10 °C |
| Approvals | CE |
| Number of pneumatic connections | 2 pcs. |
| Pneumatic input connection | G 1/2 |
| Pneumatic output connection | G 1/2 |
| Mode of operation of drive | Double acting |
| Maximum piston speed | 700 mm/s |
| Type of cushioning | Both Ends (Air Cushion) |
| Piston rod end | Male thread |
| Male thread of rod end | M27 x 2 |
| Weight | 9.340 Kg |

Dimensions



Additional information

Catalogue

[CP96-Bb_EU.pdf](#)