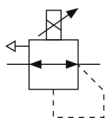


ITV00**, Compact Electro-Pneumatic Regulator

ITV0090-3N

Datasheet

- Built-in one-touch fitting
- Error indication LED
- High stability
- High-response time
- Compact and lightweight



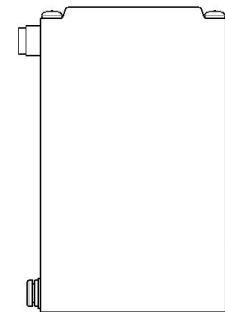
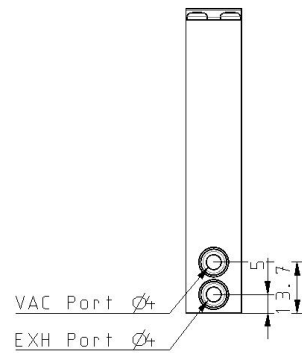
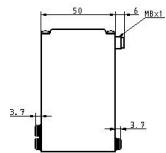
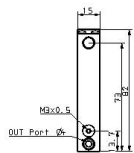
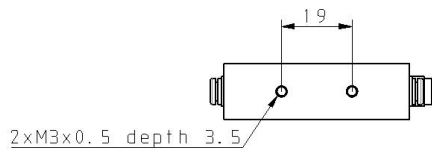
Electro-pneumatic regulator

Standard specifications

Pressure Range	9 (-1 to -100 kPa)
Power Voltage	0 (DC24V)
Input Signal	3 (Voltage Style 0~10 V DC)
Built-in One-touch Fitting	Metric Size One-touch Fitting
Base Type	Single Unit [Standard Base Type]
Bracket	None
Cable Connector	N (w/oCable Connector)
Maximum operating pressure	-1.0 kPa
Minimum operating pressure	-101 kPa
General power supply	24 V DC \pm 10 %, max. 0.12 A
Conform to the European RoHS Directive	Conform
Approvals	CE
Pneumatic input connection	Ø 4 mm
Pneumatic output connection	Ø 4 mm
Pneumatic exhaust connection	Ø 4 mm
Current consumption	0.12 A
Enclosure	IP65
Sensitivity	Within 0.2% (Full span)
Repeatability	Within \pm 0.5% (Full span)

Set pressure range	0.001 - 0.1 MPa
Linearity	Within $\pm 1\%$ (Full span)
Power supply voltage	24 VDC $\pm 10\%$
Max. supply pressure	-101 kPa
Min. supply pressure	Set pressure -1 kPa
Temperature characteristics	Within $\pm 0.12\%$ (Full span)/ $^{\circ}\text{C}$
Connection	Built-in One-touch fittings
Hysteresis	Within 0.5% (Full span)
Input signal Voltage type	0 - 10 VDC
Input impedance Voltage type	10 k Ω
Output signal Analogue	1 to 5 VDC (Output impedance: Approximately 1 k Ω) Output accuracy within $\pm 6\%$ (Full span)
Weight	0.100 Kg

Dimensions



Additional information

Catalogue	ITV-Ff_EU.pdf
Declaration of conformity	newDoC_ITV0000_TF1V091EN.pdf newDoC_ITV0000_TF1Y245EN.pdf DoC_ITV00x_TF00001-B.pdf
Installation manuals	IMM_ITV00x_TF110GB-A.pdf
Operation manuals	OM_ITV0_OM00002EN.pdf itv0000_op_man_itv0-om00002.pdf