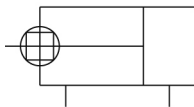


C(D)85K, ISO Cylinder, Double Acting, Single Rod, Non-Rotating CD85KN10-40-B

Datasheet

General series information

- ISO cylinder, double acting, single rod
- Bore sizes (mm): 8, 10, 12, 16, 20, 25
- Type: non-rotating
- Cushion: rubber bumper only
- Strokes (mm): up to 300 (depending on bore)
- Auto switches available (order separate)



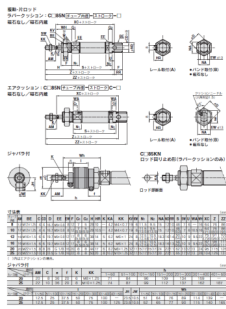
Double-acting cylinder, non-rotating single piston rod

Standard specifications

| | |
|--|---|
| Magnet | D (Built-in) |
| Mounting | N (Basic Integrated Clevis) |
| Bore Size | Ø10 mm |
| Stroke | 40 |
| Switch Mounting | B (Band) |
| Auto Switch | No Switch |
| Lead Wire or Prewired Connector | 0.5m (Or None in the Case of No Switch) |
| Number | 2 pcs. (Or None in the Case of No Switch) |
| Rod End Options | None |
| Made of Stainless Steel | None |
| Long Stroke | None |
| - | Compressed air |
| Maximum temperature of pressure medium with magnet | 60 °C |
| Minimum temperature of pressure medium with magnet | -10 °C |
| Maximum operating pressure | 1 MPa |
| Minimum operating pressure | 0.08 MPa |
| Proof pressure | 1.5 MPa |

| | |
|---|-----------------|
| Maximum ambient temperature with magnet | 60 °C |
| Minimum ambient temperature with magnet | -10 °C |
| Pneumatic input connection | M5 |
| Pneumatic output connection | M5 |
| Theoretical cylinder force, advance stroke (at 0.5 MPa) | 39.3 N |
| Theoretical cylinder force, return stroke (at 0.5 MPa) | 33.0 N |
| Maximum piston speed | 1500 mm/s |
| Type of cushioning | Rubber bumper |
| Piston rod end | External thread |
| Male thread of rod end | M4 |
| Tolerance of torsion | ±1° 30' |
| Weight | 0.062 Kg |

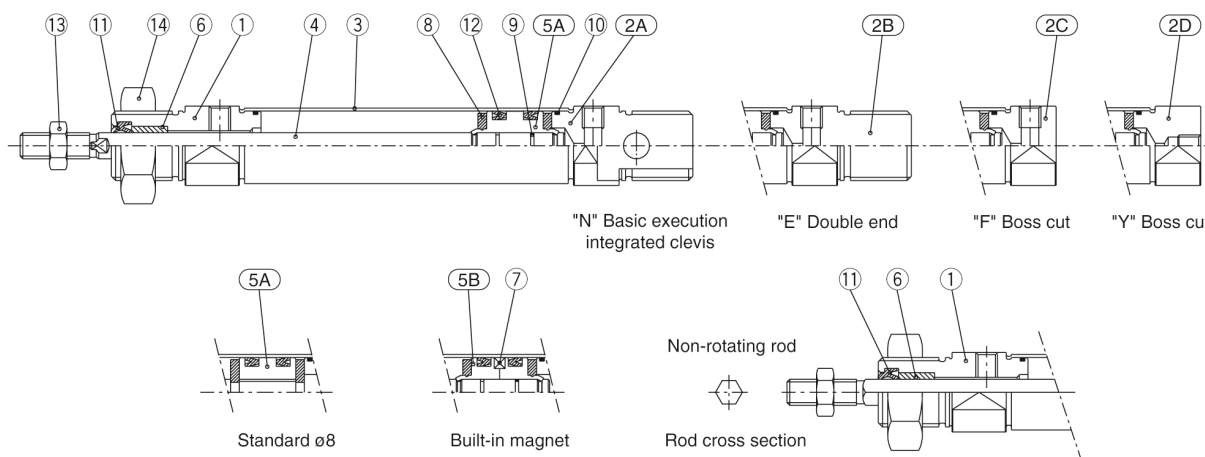
Dimensions



Constructions

Double acting: Single rod

□85□8 to16 Rubber bumper (Disassembly is not possible)



Component Parts

| No. | Description | Material | Quantity | Remarks |
|-----|---------------|-----------------|----------|-----------------------|
| ① | Rod cover | Aluminum alloy | 1 | White anodized |
| ②A | Head cover N | Aluminum alloy | 1 | White anodized |
| ②B | Head cover E | Aluminum alloy | 1 | White anodized |
| ②C | Head cover F | Aluminum alloy | 1 | White anodized |
| ②D | Head cover Y | Aluminum alloy | 1 | White anodized |
| ③ | Cylinder tube | Stainless steel | 1 | |
| ④ | Piston rod | Stainless steel | 1 | |
| ⑤A | Piston A | Brass | 1 | |
| ⑤B | Piston B | Brass | 2 | (Switch style piston) |

| No. | Description | Material | Quantity | Remarks |
|-----|---------------|-----------------|----------|----------------------|
| ⑥ | Bushing | Sintered bronze | 1 | |
| ⑦ | Magnet | | 1 | (Switch style only) |
| ⑧ | Bumper | Urethane | 2 | |
| ⑨ | Piston gasket | NBR | 1 | (2 for switch style) |
| ⑩ | Tube gasket | NBR | 2 | |
| ⑪ | Rod seal | NBR | 1 | |
| ⑫ | Piston seal | NBR | 2 | |
| ⑬ | Rod end nut | Carbon steel | 1 | Nickel plated |
| ⑭ | Mounting nut | Carbon steel | 1 | Nickel plated |

Additional information

Catalogue

[C85_C75-A_EU.pdf](#)