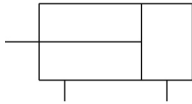


JMGP, Dual Rod Cylinder JMGP25-100

Datasheet

General series information

- Dual rod cylinder with slide bearing.
- Compact and Lightweight.
- Bore sizes (mm): 12 ~ 100.
- Strokes up to 200 mm.
- Bumper cushion.
- Piping is possible in 4 directions.
- 3 mounting options.



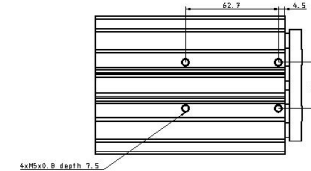
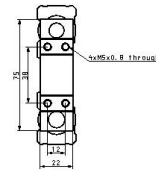
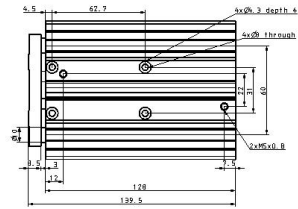
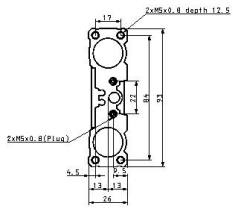
Double-acting, single-rod cylinder

Standard specifications

Bore Size	25 (20 mm x 2)
Port Thread Type	M thread: $\varnothing 12$ to $\varnothing 32$, Rc: 40 to 100
Stroke	100 mm
Auto Switch	No Switch
Lead Wire or Prewired Connector	0.5m (Or None in the Case of No Switch)
Number	2 pcs. (Or None in the Case of No Switch)
Pressure medium	Air
Maximum temperature of pressure medium	60 °C
Minimum temperature of pressure medium	5 °C
Maximum operating pressure	0.7 MPa
Minimum operating pressure	0.15 MPa
Proof pressure	1.05 MPa
Maximum ambient temperature	60 °C
Minimum ambient temperature	5 °C
Number of pneumatic connections	8 pcs.
Pneumatic input connection	M5 x 0.8

Mode of operation of drive	Double acting
Theoretical cylinder force, advance stroke (at 0.5 MPa)	314 N
Theoretical cylinder force, return stroke (at 0.5 MPa)	236 N
Maximum piston speed	300 mm/s
Type of cushioning	Rubber bumper on both ends
Minimum piston speed	50 mm/s
Non-rotating accuracy of plate	$\pm 0.06^\circ$
Lubrication	Not required (Non-lube)
Allowable rotational torque	0.21 N·m
Allowable lateral load	8.82 N
Weight	0.680 Kg

Dimensions



Additional information

Catalogue

[JMGP-D_EU.pdf](#)