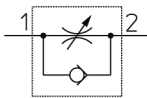


## AS\*2F, Speed Controller, One-touch Fitting, In-line, Compact AS2002F-06-X214

### Datasheet

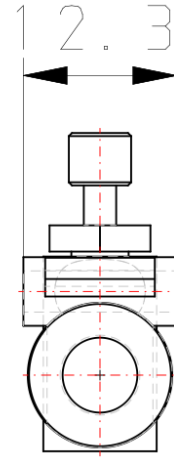
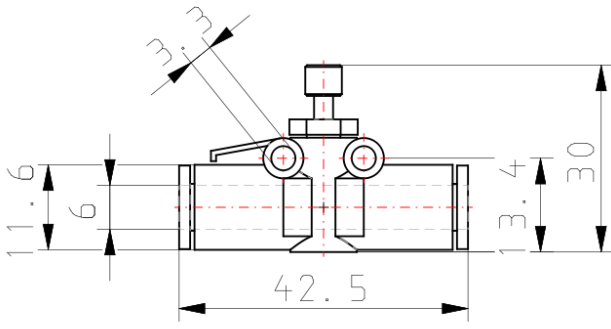
Using SMC speed controllers with built in one-touch fittings minimizes installation time, reduces mounting height and enables a more compact machine design. These speed controllers allow the body to be rotated to facilitate simple installation. Available in thread sizes from M3 to 1/2 in both inch (NPT) and metric R(PT) and with tube sizes from 3.2mm to 12mm OD (metric) and 1/8 to 1/2 OD (inch) and with optional elbow and universal style (increased flexibility) and meter in and meter out, these flow controls are designed to meet most applications.



Flow control valve, adjustable, with reverse free flow

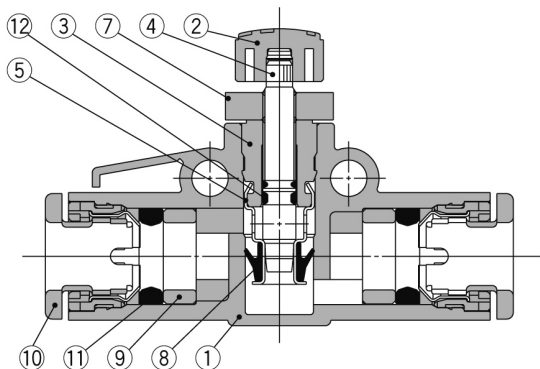
### Standard specifications

|  |   |
|--|---|
| Body Size                              | 200 (1/8 Standard)                      |
| Applicable Tube O.D.                   | 06 (ø6)                                 |
| Option                                 | X214 (Restrictor [Without Check Valve]) |
| Lock Nut                               | Standard (Hexagon)                      |
| Pressure medium                        | Compressed air                          |
| Maximum temperature of pressure medium | 60 °C                                   |
| Minimum temperature of pressure medium | -5 °C [without condensation]            |
| Maximum operating pressure             | 1.0 MPa                                 |
| Minimum operating pressure             | 0.1 MPa                                 |
| Proof pressure                         | 1.5 MPa                                 |
| Maximum ambient temperature            | 60 °C                                   |
| Minimum ambient temperature            | -5 °C                                   |
| Conform to the European RoHS Directive | Conform                                 |
| Numero of pneumatic connections        | 2 pcs.                                  |
| Pneumatic input connection             | Ø 6 mm                                  |
| Pneumatic output connection            | Ø 6 mm                                  |
| Function of Flow control valve         | Throttle valve                          |
| Flow rate                              | 230 NI/min                              |
| Usable tubing material                 | Soft Nylon                              |



## Constructions

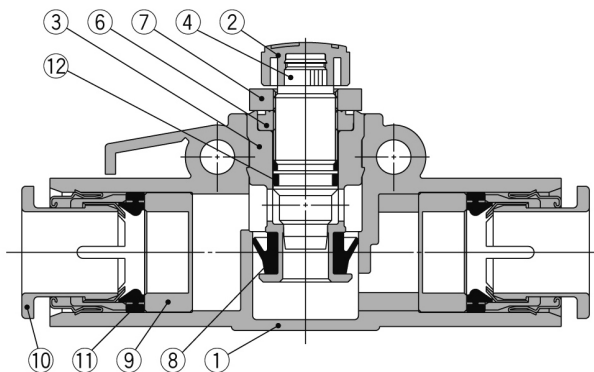
### AS1002F, AS2002F, AS2052F



#### Component Parts

| No. | Description         | Material | Note                      |
|-----|---------------------|----------|---------------------------|
| 1   | <b>Body A</b>       | PBT      |                           |
| 2   | <b>Handle</b>       | PBT      |                           |
| 3   | <b>Body B</b>       | Brass    | Electroless nickel plated |
| 4   | <b>Needle</b>       | Brass    | Electroless nickel plated |
| 5   | <b>Seat ring</b>    | Brass    | Electroless nickel plated |
| 6   | <b>Needle guide</b> | Brass    | Electroless nickel plated |

### AS1002F-02, AS3002F, AS4002F



| No. | Description     | Material             | Note           |
|-----|-----------------|----------------------|----------------|
| 7   | <b>Lock nut</b> | Steel wire           | Zinc chromated |
| 8   | <b>U-seal</b>   | HNBR                 |                |
| 9   | <b>Spacer</b>   | POM <sup>Note)</sup> |                |
| 10  | <b>Cassette</b> | —                    |                |
| 11  | <b>Seal</b>     | NBR                  |                |
| 12  | <b>O-ring</b>   | NBR                  |                |

Note) AS2052F, AS3002F, AS4002F are made of PBT. AS3002F-11, AS4002F-11, AS4002F-13 are made of electroless nickel plated brass.

## Additional information

Catalogue

[AS1002F-4002F-A\\_EU.pdf](#)