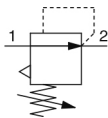


IR1000/2000/3000, Precision Regulator IR2000-02

Datasheet

General series information

- Precision regulator
- Regulating pressure range (MPa): 0.005 to 0.8 depending on model
- Compact and lightweight
- Bracket & pressure gauge can be mounted on either the front or back
- 2 air operated models.



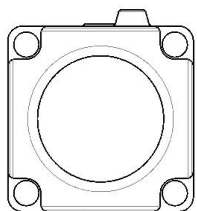
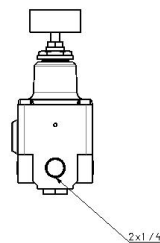
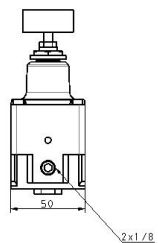
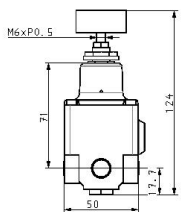
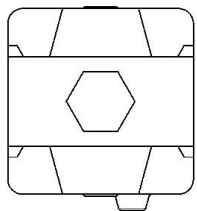
Pressure control valve, relieving pressure regulator, adjustable

Standard specifications

| | |
|---|--|
| Body Size | 2 (IR2000) |
| Type of Setting | 0 (Basic [Handle]) |
| Set Pressure | 0 (0.005~0.2MPa [IR1000/2000] or 0.01~0.2MPa [IR3000]) |
| Thread | Rc(PT) |
| Port Size | 02 (1/4 [IR2000/3000]) |
| Accessory | None |
| Suffix 1 | Standard |
| Suffix 2 | None |
| Made to Order | None |
| Switch Specifications | None |
| Pressure medium | Air |
| Maximum temperature of pressure medium | 60 °C |
| Minimum temperature of pressure medium | -5 °C [with no freezing] |
| Maximum operating pressure | 1.0 MPa |
| Minimum operating pressure | +0.05 Mpa |
| Maximum ambient temperature | 60 °C |
| Maximum ambient temperature with magnet | -5 °C [with no freezing] |
| Approvals | No need |

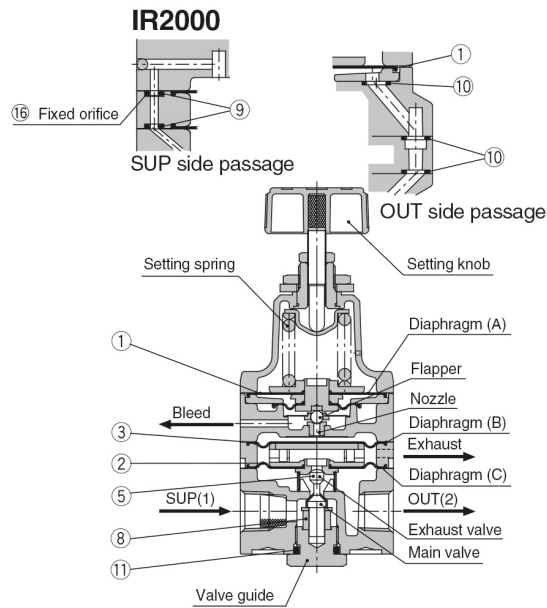
| | |
|---|--------------------------|
| Sensitivity | Within 0.2% of full span |
| Repeatability | Within 0.5% of full span |
| Set pressure range | 0.005 - 0.2 MPa |
| Linearity | Within 1% of full span |
| Air consumption (At supply pressure of 1.0 MPa) | 4.4 l/min (ANR) or less |
| Input signal pressure | 0.01 - 0.8 Mpa |
| Weight | 0.300 Kg |

Dimensions



Constructions

Construction



Replacement Parts

| No. | Description | Material | IR20□0 | |
|--|--------------------|----------------------|--------------|------|
| | | | Part no. | Qty. |
| 1 | Diaphragm assembly | NBR, other | P362020-2 | 1 |
| 2 | Diaphragm assembly | NBR, other | P362020-5 | 1 |
| 3 | Diaphragm | NBR, other | P36202019 | 1 |
| 4 | Valve | Stainless steel, NBR | — | — |
| 5 | Valve | Stainless steel, NBR | P36202068#1 | — |
| 6 | Valve | Brass, NBR | — | — |
| 7 | Valve | Brass, NBR | — | 1 |
| 8 | Damper | NBR, other | P36202026 | 2 |
| 9 | O-ring | H-NBR | ø1.42 x 1.52 | 3 |
| 10 | O-ring | NBR | ø4.5 x 1 | 1 |
| 11 | O-ring | NBR | JISB2401P11 | — |
| 12 | O-ring | NBR | — | — |
| 13 | O-ring | NBR | — | — |
| 14 | Seal (A) | NBR | — | — |
| 15 | Seal (B) | NBR | — | 1 |
| 16 | Fixed throttle | Stainless steel | P36202018 | — |
| Repair kit no. (A set of above nos. ① to ⑮.) | | | KT-IR2000 | |

Additional information

| | |
|-------------------|--|
| Catalogue | IR1000-2000-3000-B_EU.pdf |
| Operation manuals | OM_IR30-OM00002EN-F.pdf IR10-OM00006_GB.pdf OM_IR20-OM00004EN-E.pdf OM_IR10_OM00002EN-E.pdf OM_IR20_OM00002EN-F.pdf OM_IR30_OM00004EN-F.pdf |