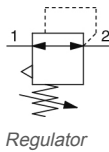


AR-B, Regulator & Regulator w/Backflow Function AR20-F01BE-B

Datasheet

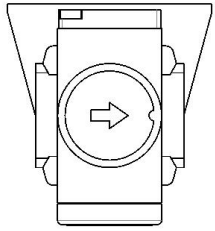
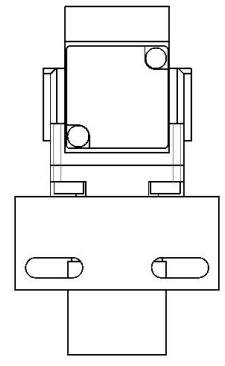
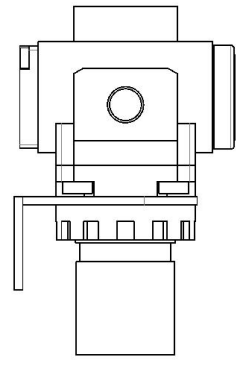
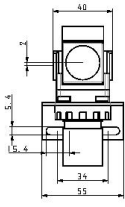
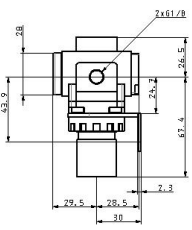
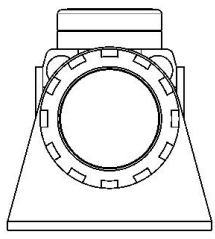
General series information



Standard specifications

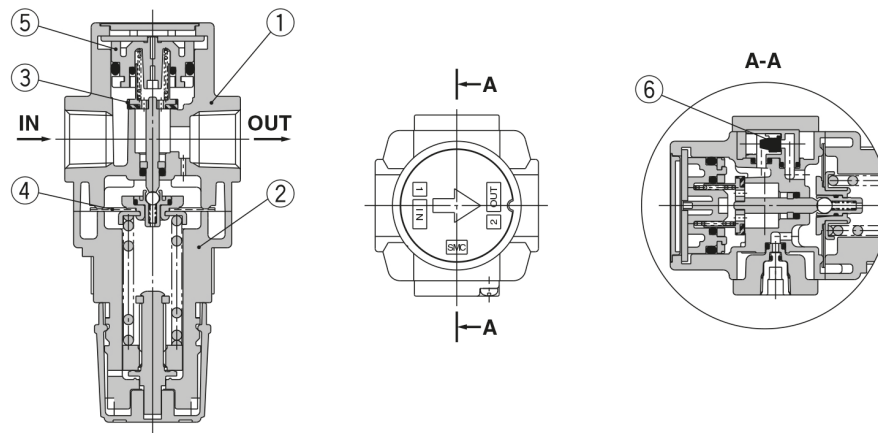
| | |
|-----------------------------|--|
| Made to Order 1 | None |
| Body Size | 20 |
| Backflow Function | None |
| Thread | F (G) |
| Port | 01 (1/8) |
| Option | BE (w/Bracket + Square embedded type pressure gauge, with limit indicator) |
| Semi-standard | Standard |
| Made to Order 2 | None |
| Pressure medium | Air |
| Maximum operating pressure | 1.0 MPa |
| Proof pressure | 1.5 MPa |
| Maximum ambient temperature | 60 °C |
| Minimum ambient temperature | -5 °C (with no freezing) |
| Approvals | No need |
| Weight | 0.209 Kg |

Dimensions



Constructions

AR20(K)-B/AR25(K)-B



Component Parts

| No. | Description | Material | Model | Colour |
|-----|-------------|--------------------|------------------------|--------|
| 1 | Body | Zinc die-cast | AR10-A | White |
| | | Aluminium die-cast | AR20(K)-B to AR60(K)-B | |
| 2 | Bonnet | Polyacetal | AR10-A | White |
| | | | AR20(K)-B to AR40(K)-B | |
| | | Aluminium die-cast | AR50(K)-B/AR60(K)-B | |

[AR20(K)-B to AR60(K)-B]

| No. | Description | Material | Part no. | | | | | |
|-----|-------------------------|-----------------|--------------|-------------|-------------|-------------|--------------|-------------|
| | | | AR20(K)-B | AR25(K)-B | AR30(K)-B | AR40(K)-B | AR40(K)-06-B | AR50(K)-B |
| 3 | Valve | Brass, HNBR | AR20P-410S | AR25P-410S | AR30P-410S | AR40P-410S | AR50P-410S | AR60P-410S |
| 4 | Diaphragm assembly | Weatherable NBR | AR20P-150AS | AR25P-150AS | AR30P-150AS | AR40P-150AS | AR50P-150AS | |
| 5 | Valve guide assembly | Polyacetal | AR20P-050AS | AR25P-050AS | AR30P-050AS | AR40P-050AS | AR50P-050AS | AR60P-050AS |
| 6 | Check valve assembly *1 | — | AR23KP-020AS | | | | | |

*1 Check valve assembly is applicable for a regulator with backflow function (AR20K-B to AR60K-B) only.
 Assembly of a check valve cover, check valve body assembly and 2 mounting screws

Additional information

| | |
|----------------------|--|
| Catalogue | AC-B-B_EU.pdf |
| Installation manuals | IM_AR-B_TF2Z394EN.pdf |
| Operation manuals | OM_AR-B_OMS0056EN.pdf OM_ARxK-B_OMT0015EN.pdf |