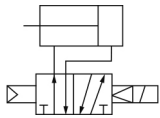


## CKG1-Z/CKP1-Z, Clamp Cylinder w/Magnetic Field Resistant Auto Switch (Rod Mounting Style) CKG1B63-125YZ-P-X1515

Datasheet

### General series information

- Clevis width: 16.5mm, 19.5mm
- Easy speed adjustment
- Piping ports are located on three surfaces
- Air cushion: unclamped, head on



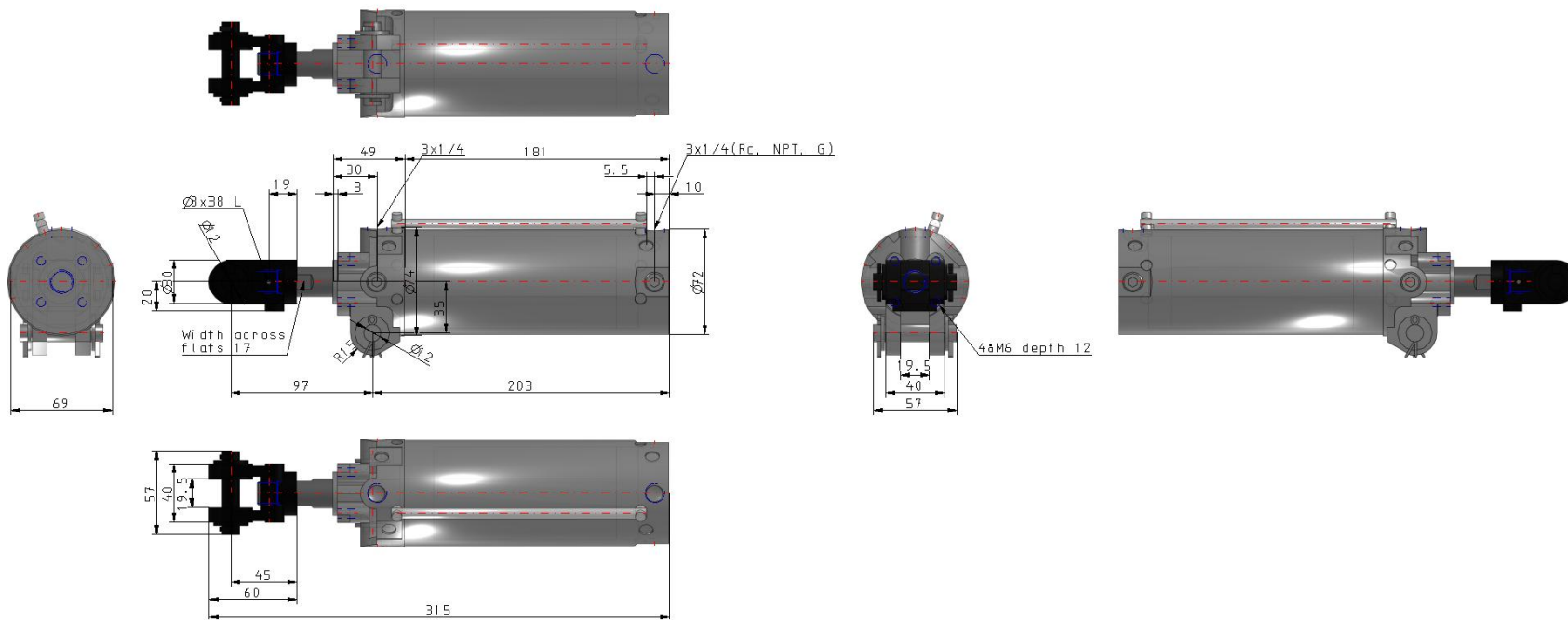
Clamp, w/Magnetic Field Resistant Auto Switch (Rod Mounting Style) Cylinder

### Standard specifications

Magnet	G1 (Built-in Standard Magnet w/Magnetic Field Resistant Auto Switch)
Clevis	B (19.5mm)
Bore Size	63mm
Thread	Rc1/4
Stroke	125mm
End Bracket	Y (Double Knuckle Joint, M6 w/o Tap)
Option	None
Auto Switch	P [w/o Auto Switch(Built-in Magnet); with Switch Mounting Rod]
Lead Wire or Prewired Connector	0.5m (Or None in the Case of No Switch)
Number	2 pcs. (Or None in the Case of No Switch)
Air Cushion	X1515 (With Air Cushion on Both Ends)
Maximum operating pressure	1.0 MPa
Minimum operating pressure	0.05 MPa
Proof pressure	1.5 MPa
Maximum piston speed	500 mm/s
Type of cushioning	Unclamped side (head end): With air cushion
Minimum piston speed	50 mm/s
Lubrication	Non-lube

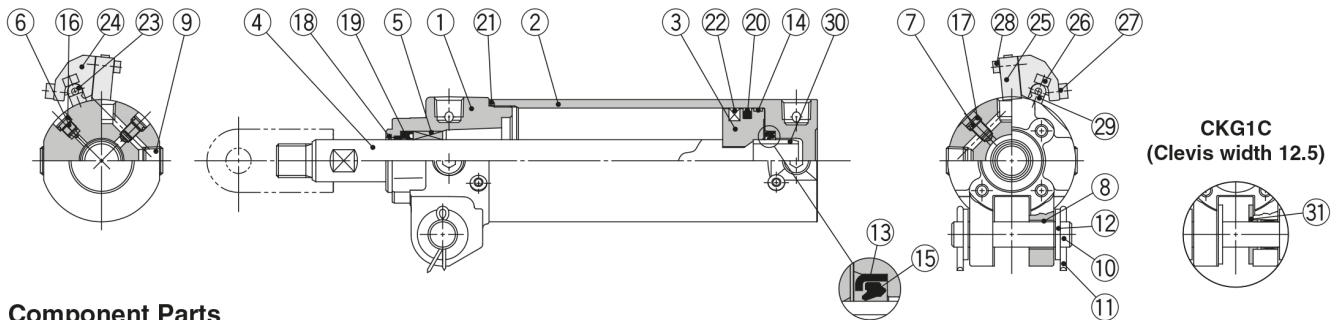
Fluid	Air
Ambient and fluid temperature	-10°C - 60°C
Stroke length tolerance	+1.0 0
Mounting	Double clevis
Speed controller	Equipped on both ends
Weight	0.000 Kg

# Dimensions



## Constructions

### CKG1□40, 50, 63 Rod mounting style



#### Component Parts

No.	Description	Material	Q'ty	Note
1	Rod cover	Aluminum alloy	1	Chromated
2	Tube cover	Aluminum alloy	1	Hard anodized
3	Piston	Aluminum alloy	1	Chromated
4	Piston rod	Carbon steel	1	Hard chrome plating
5	Bushing	Bearing alloy	1	
6	Cushion valve	Steel wire	1	Black zinc chromated
7	Speed controller valve	Steel wire	2	Nickel plating
8	Clevis bushing	Oil-impregnated sintered alloy	2	
9	Hexagon socket head plug	Carbon steel	4	Rc1/4
10	Pin	Carbon steel	1	
11	Cotter pin	Low carbon steel wire rod	2	
12	Flat washer	Rolled steel	2	
13	Cushion seal retainer	Rolled steel	1	Zinc chromated
14	Wear ring	Resin	1	
15	Cushion seal	Urethane	1	
16	Cushion valve seal	NBR	1	
17	Speed controller valve seal	NBR	2	

No.	Description	Material	Q'ty	Note
18	Coil scraper	Phosphor bronze	1	
19	Rod seal	NBR	1	
20	Piston seal	NBR	1	
21	Tube gasket	NBR	1	
22	Magnet	—	1	
23	Switch mounting rod	Carbon steel	1	Zinc chromated
24	Auto switch mounting bracket	Aluminum alloy	—	
25	Magnetic field resistant auto switch	—	—	
26	Hexagon socket head cap screw	Steel wire	2	M4 x 0.7 x 14 L
27	Hexagon socket head cap screw	Steel wire	2 pcs. per switch	M4 x 0.7 x 8 L
28	Hexagon socket head cap screw	Steel wire	2 pcs. per switch	M3 x 0.5 x 14 L
29	Switch mounting spacer	Aluminum alloy	2	
30	Cushion ring	Aluminum alloy	1	Anodized
31	Spacer	Bearing alloy	2	CKG1C only

## Additional information

Catalogue	<a href="#">CK1-Z-Bb_EU.pdf</a>
Operation manuals	<a href="#">OM_CK1-Z_0066EN-P.pdf</a>